

# Unmasking the Partnerships: Adult Ed and Workforce Boards

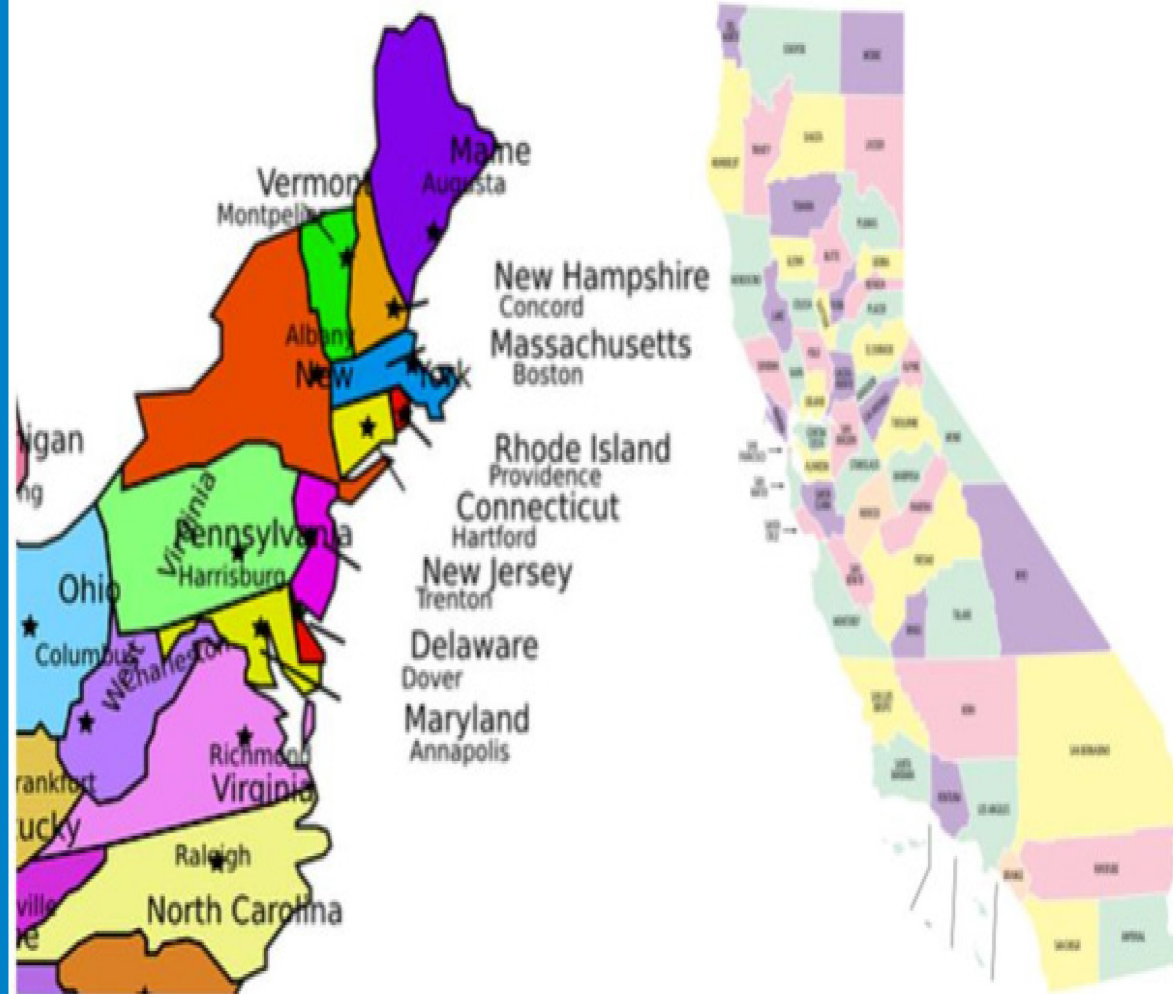
*Dr. Carolyn Zachry, Ed.D.*

*Bob Lanter*





# The California Landscape



163,696 mi<sup>2</sup>

840 miles of coastline

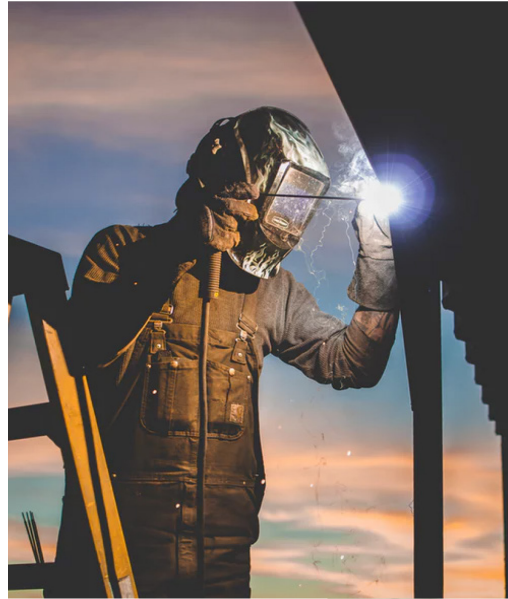
Trees: 379.7 feet and  
24 feet in diameter

Highest peak:  
Mt. Whitney

Lowest spot:  
Death Valley



5<sup>th</sup> largest  
economy in  
the world by  
GDP







# Silicon Valley



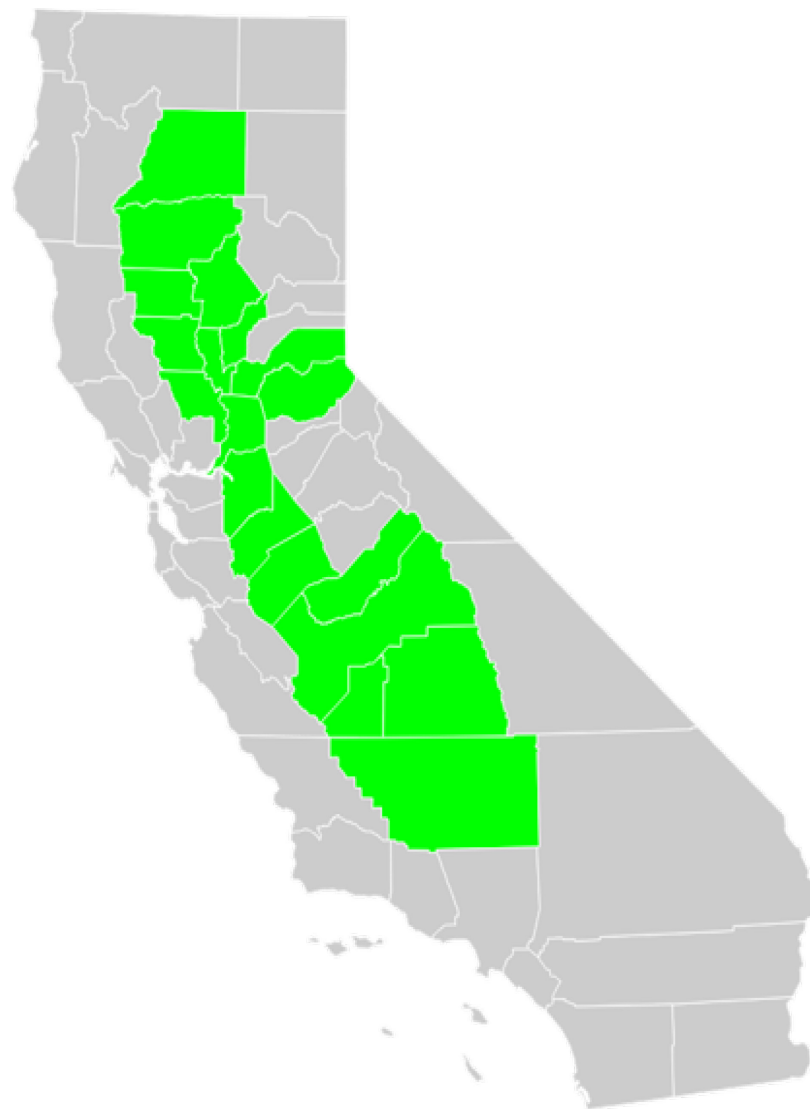
# California Tech







# Central Valley



## California Crops

More than half of the country's vegetables, fruits, and nuts are grown in California.

|                  |     |                |     |
|------------------|-----|----------------|-----|
| Almonds          | 99% | Celery         | 95% |
| Artichokes       | 99% | Apricots       | 94% |
| Dates            | 99% | Wine Grapes    | 92% |
| Figs             | 99% | Strawberries   | 90% |
| Kiwifruit        | 99% | Cauliflower    | 90% |
| Olives           | 99% | Avocados       | 87% |
| Clingstone Peach | 99% | Lemons         | 89% |
| Pistachios       | 99% | Carrots        | 86% |
| Pomegranates     | 99% | Lettuce        | 78% |
| Walnuts          | 99% | Spinach        | 62% |
| Garlic           | 97% | Chili Peppers  | 57% |
| Plums            | 97% | Bell Peppers   | 49% |
| Broccoli         | 96% | Rice           | 26% |
| Nectarines       | 96% | Sweet Potatoes | 23% |
| Tomatoes, Canned | 96% | Milk and Cream | 21% |

Source: California Department of Food and Agriculture



SoCal

# Bio-tech and Manufacturing







Tourism.....



...& Entertainment







# California Residents by the Numbers



1 in 10 Americans is a Californian

1 in 4 immigrants is a Californian

Population of California: 39,536,653

Census Data



# Adult Education in California

*Adult Education Office  
California Department of Education  
@CAAdultEd*





# Our Rich History



In 1856 the first class for adults was organized by the San Francisco Board of Education and offered in the basement of St. Mary's Cathedral.

Today we have over 200 agencies providing services for adults to better their education, career training, and the opportunity to learn English.

Our history is so rich and treasured that it has been archived and is held at Stanford University.





# Workforce Development System in California

*America's Job Centers of California  
Local Workforce Development Boards  
California Workforce Development Board  
Employment Development Department*





# 45 Local Workforce Development Boards 14 Regional Planning Units

170 career centers (AJCCs)

Served 1.3 Million job seekers in  
PY 17-18

Statewide Industry Sectors

- Manufacturing
- Construction
- Healthcare
- Hospitality
- ICT

WIOA Regional Planning Units



Cartography By:  
Labor Market Information Division  
California Employment Development Department  
July 2015

File: C073



# Demographics: System to System

*A side by side perspective*



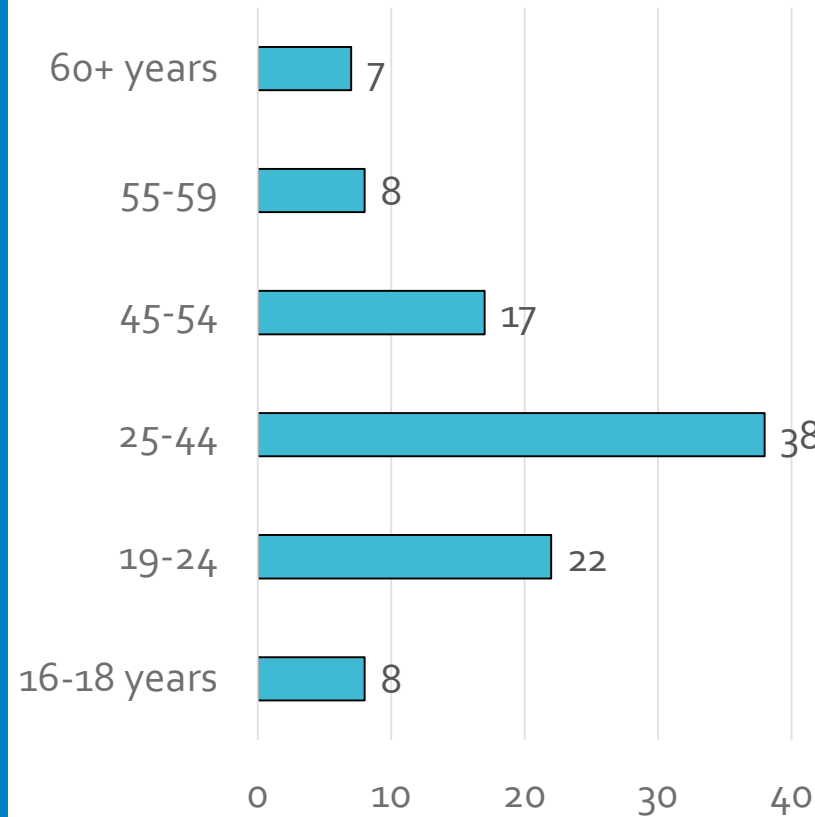




# Age Group

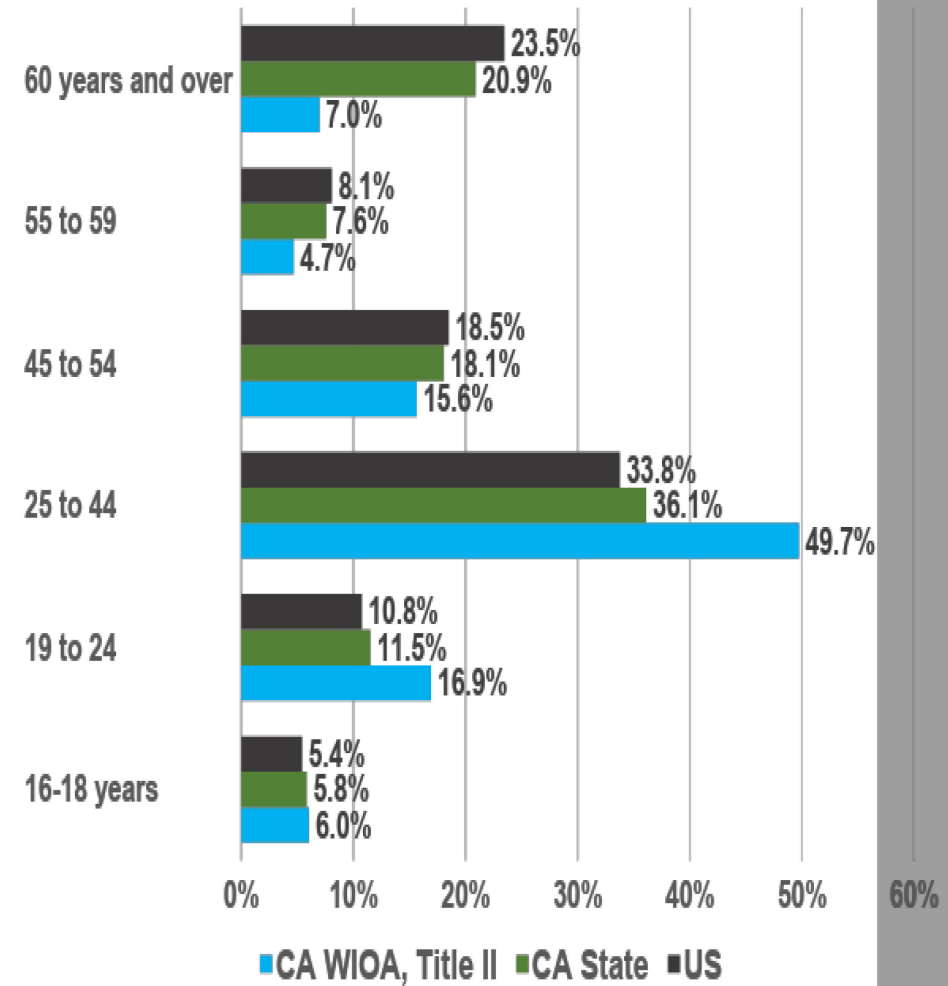


## Workforce (WIOA Title I)



Source California WIOA,  
Title I

## Adult Education

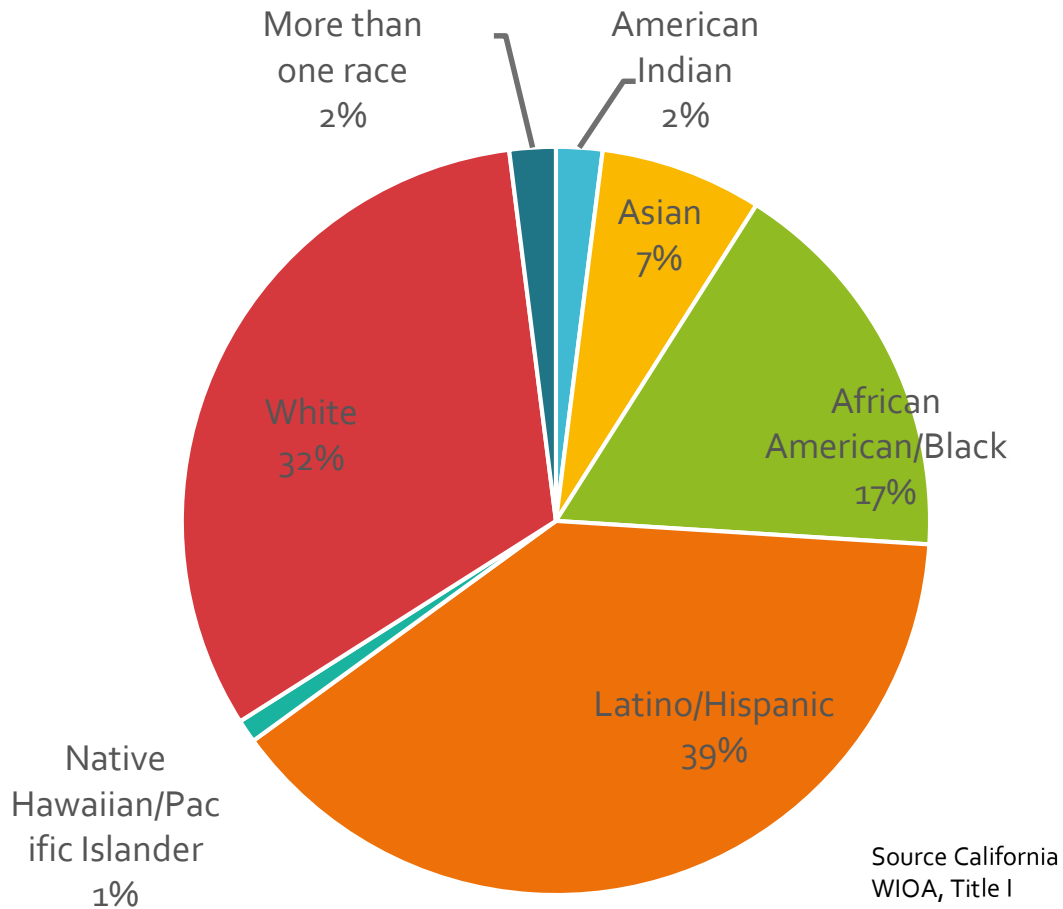


Source U.S. Census  
Data and California  
WIOA, Title II





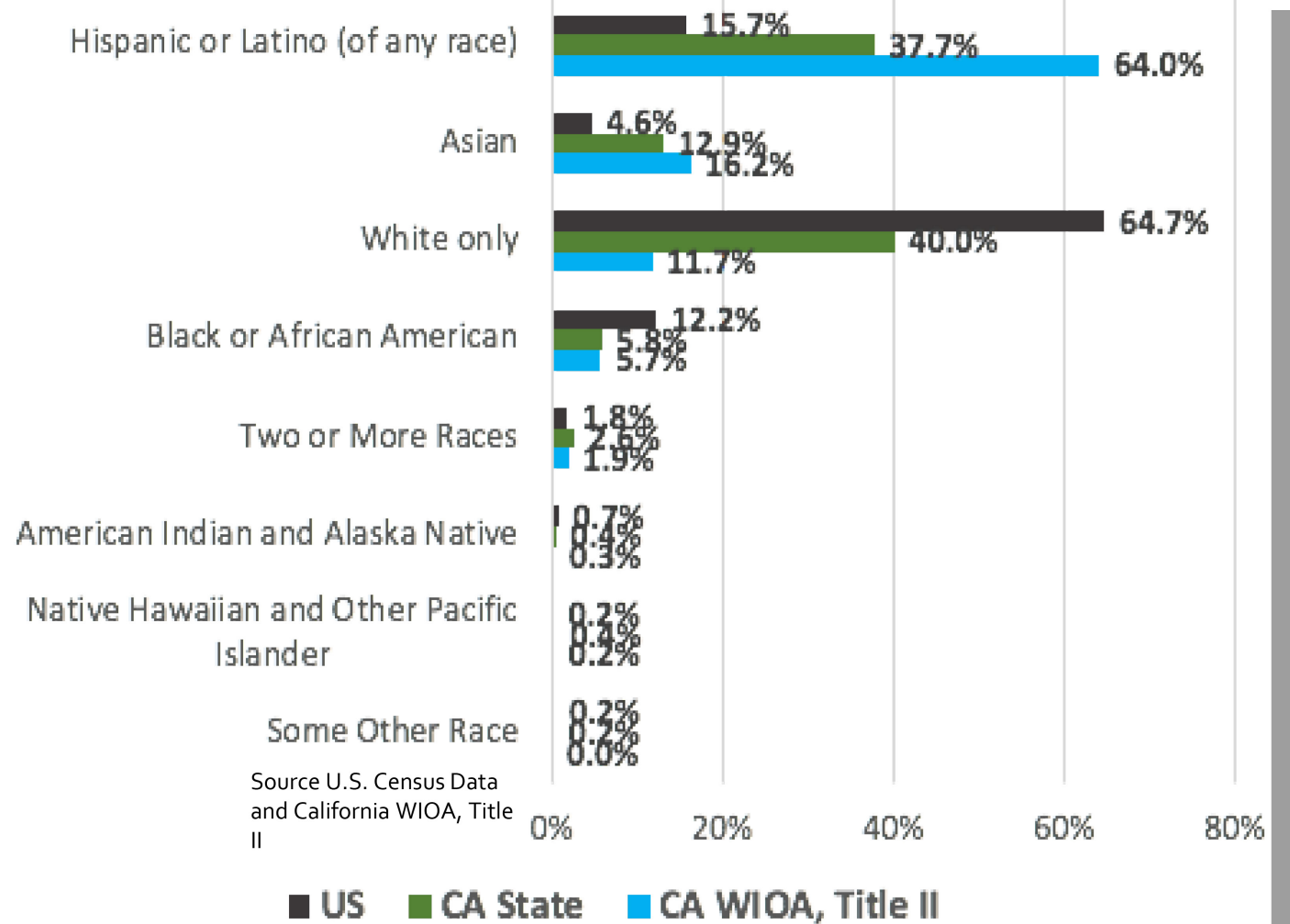
# Workforce (WIOA Title I)



Race



# Adult Education

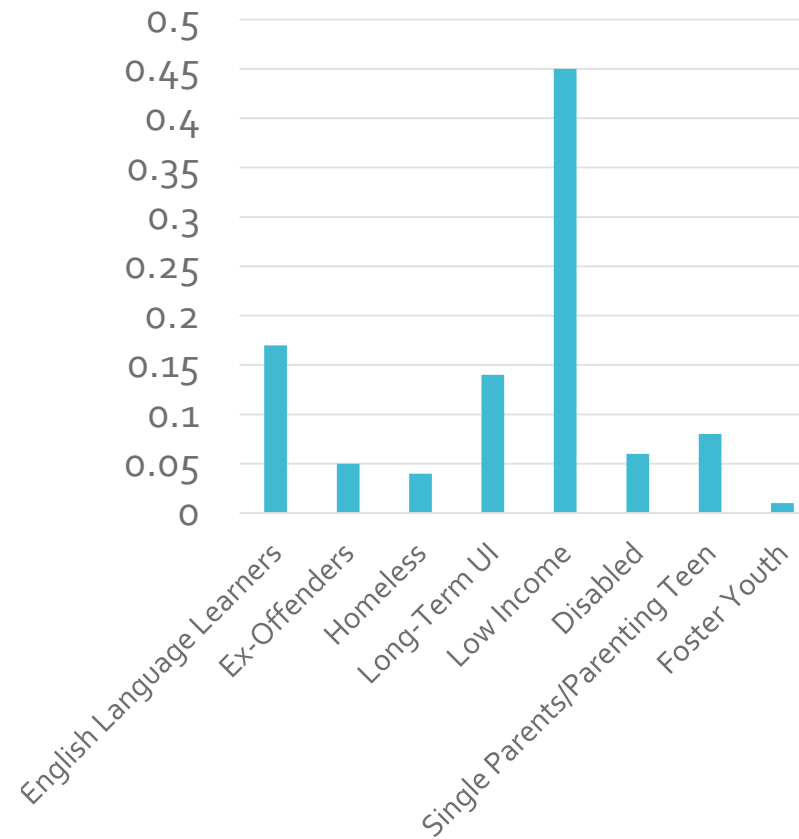




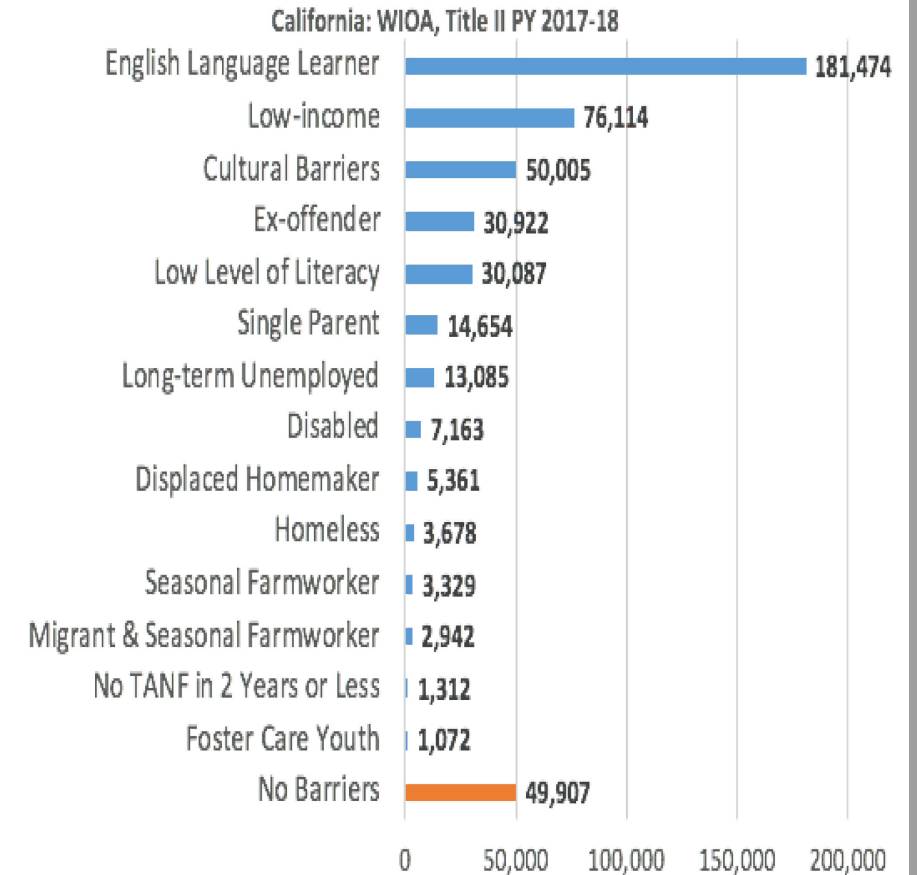
# Barriers to Employment



## Workforce (WIOA Title I)



## Adult Education







# The Power of Partnerships

*The Reese's Peanut Butter Effect*

*California Initiatives Centered on Partnership*

*Successful Adult Education / Workforce Development Board Partnerships*

*Defining Traits of Key Partnerships*





# The Reese's Peanut Butter Effect



# Key California Initiatives Driven by Strategic Partnerships

- Regional Planning
  - Sector Initiatives
- Strategic Co-Enrollment
- Career Pathway Development
  - English Language Learner
  - Apprenticeship Expansion
    - Prison2Employment





# ACTIVITY

- In groups of 3-5 see how many initiatives that are occurring in your State that you can list whose success is dependent on strong partnerships.
- How many are participating in these or a version of these?
- What made these partnerships successful?
- Adult Education/Workforce Development Board partnerships around the state



# Madera County



- The Adult School (housed through AJCC) is offering the Internet Core Competencies Certification (IC3) program – a digital literacy program
- Through partnership, ESL, HiSET and CTE class offerings expanded, which currently include EMT, C.N.A., and Microsoft Office Specialist
- Enrollments in educational activities offered at the Adult School increased 20% from PY 16-17 to PY 17-18 and completion rates for educational activities increased slightly less than 10%.
- PY 18-19 projected enrollment increase by another 20% with a projected completion rate of between 55 and 60%.
- CTE classes now listed on ETPL
- Transition specialist employed



# Solano County



- Implementing a youth pre-apprenticeship program in partnership between the Workforce Board, Adult School and the Laborer's union
- Community Pro Referral System connects students/job seekers more effectively and gives data on referral successes
- The WDB and Adult Ed Consortium have collaborated on 4 grant applications together. Three new programs offered by the Adult Schools have been added to the ETPL site over last year as result of our partnership

# Humboldt County



- The Adult School was involved in Regional/Local Plan Modification and the Prison to Employment Initiative
- Adult Education offers Title 1 participants a variety of free classes, computer skills, and high school equivalency classes geared toward assisting individuals looking to gain new skills to assist with employment or educational goals
- Instituting an Entrepreneur Training program – Partnership between Adult School and WIOA Title 1 AJCC



# NCCCWDB



- Sutter County Adult Education, Sutter County One-Stop, Tri-County ROP and the North Central Adult Education Consortium (AEBG) all operate under the Sutter County Superintendent of Schools (SCSOS) making a tight partnership
- 1082 student co-enrolled in WIOA Adult Ed and Title 1 programs
- Sutter One-Stop outcomes are consistently above project goals
- As a result of the partnership Adult Ed/One-stop continues to improve student graduation rates, program retention rates, and job placement rates
- On average, all student populations are scoring higher on CASAS assessments, ELA 6% increase and Math 4.5% increase





## San Diego Workforce Partnership (SDWP – 1 of 1)



- ELL Navigation Program – placing refugees into work related programs through IRC/Adult Ed/AJCC
- SDWP worked with Grossmont Adult Education and CompTIA to develop a first of its kind course that embedded English language into an IT certification.
- This course also provided train the trainer components to help Grossmont's instructors learn how to teach the CompTIA created curriculum that incorporated soft skills and customer service. 90% completed the course and over 50% have successfully passed the certification exam.
- Career Coach tool ([workforce.emsicc.com](http://workforce.emsicc.com)) currently includes information about regional programs that report their data to Integrated Post-Secondary Education Data System (IPEDS.) This doesn't typically include adult ed programs
- Working with the various adult ed consortia in County to gather their program information to be manually included in the tool



# SDWP (2 of 2)



## Regional Planning

- Workforce Board is working with Adult Ed Consortia to contribute to their regional plans and vice versa
- Workforce Board provides labor market analysis of some sub-county areas, sharing information on priority sectors, and contributing information on the services provided

## Super Region Meetings

- SDWP has attended several adult ed super region meetings to present work and discuss potential future collaborations.
- These meetings have representatives from all adult ed consortia in the county, so it is an effective opportunity to share their work.



# Los Angeles City and Los Angeles County WDBs



- Los Angeles City Workforce Board in Partnership with LACOE and their Adult System implemented a Adult Ed Navigator position in all WorkSource Centers
- Success:
  - Student referrals to AJCCs 2016-17 199 month vs 2017-18 244 month
  - Student enrollments in Adult Ed 2016-17 29 month vs 2017-18 92 month
- LA County has their first AJCC located fully inside Adult School at the Hacienda La Puente School District

# Navigator Success Update



## LAUSD and City of LA Workforce Development Partnership

The Workforce Innovation and Opportunity Act (WIOA) is designed to help job seekers with barriers such as low-literacy and low income access employment, education, training, and support services to succeed in the labor market. WIOA Navigators are co-located at 10 DACE Schools and 11 City of Los Angeles WorkSource Centers. These Co-located LAUSD employees are co-funded by DACE and the City of Los Angeles Economic and Workforce development Department to assist high barrier worksorce center clients to enroll in and complete career pathway programs at DACE schools.

## 2018-19 Partnership Outcomes

### I-TRAIN Participants

**2015-2016**

Pre-Navigators  
75 Participants

**2017-18 (thru end Q2)**

223 Participants

**2018-19 (thru end Q2)**

251 Participants



### TAA Participants

**2015-2016**

Pre-Navigators  
3 Participants

**2017-18 (thru end Q2)**

14 Participants

**2018-19 (thru end Q2)**

37 Participants



### Monthly Student Referrals

**2016-2017**

119 Students/month

**2017-2018**

253 Students/month

**2018-2019 (YTD 12/31/19)**

358 Students/month



### Monthly Enrollments/Persisters

**2016-2017**

29 Students/month

**2017-2018**

92 Students/month

**2018-2019 (YTD 12/31/19)**

112 Students/month



### Monthly WSC Client Referrals

**2018-19 (thru end Q2)**

164 clients/month



### Monthly Enrollments for WSC Services

**2018-19 (thru end Q2)**

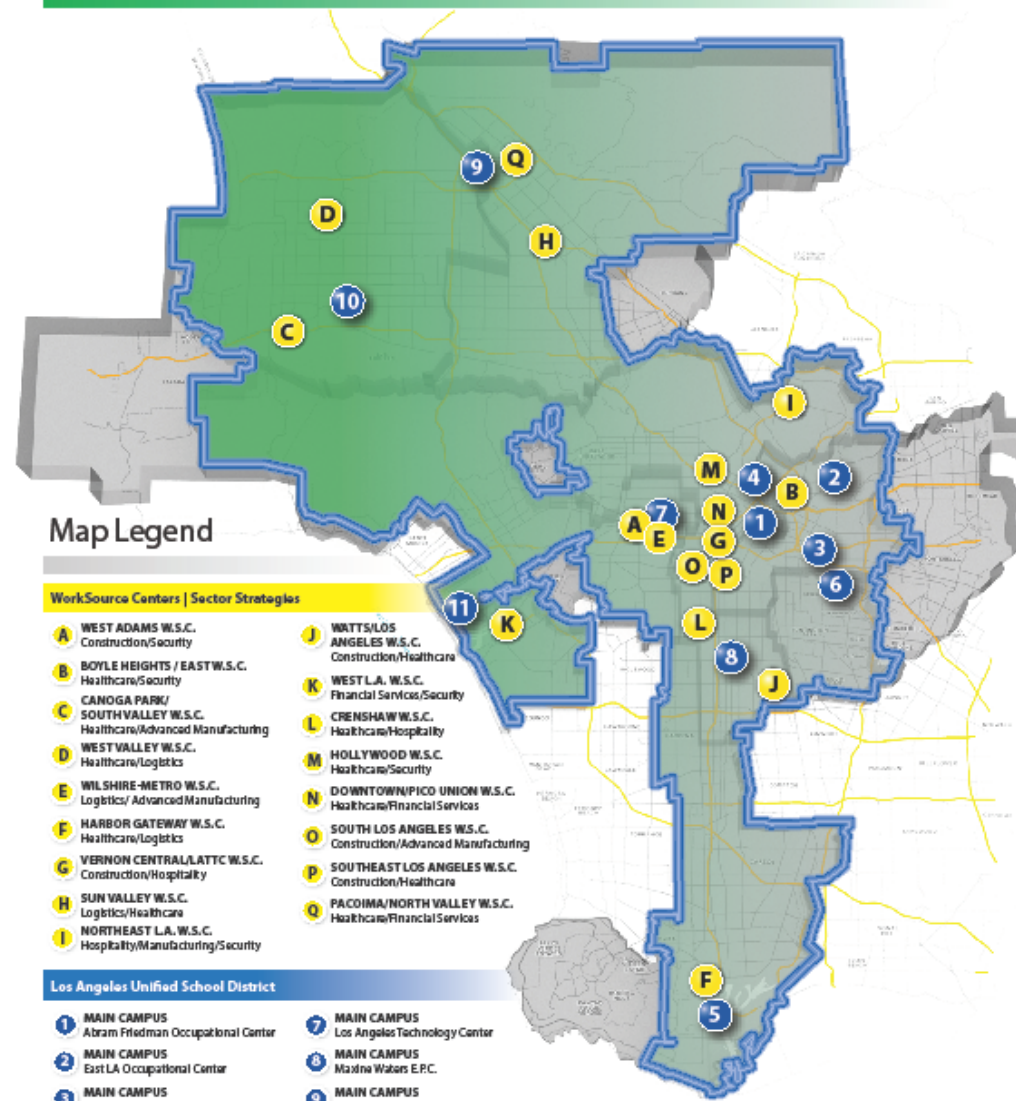
43 clients/month



[wearedace.org](http://wearedace.org)



# DACE Partnership Map



## Map Legend

### WorkSource Centers | Sector Strategies

- |  |  |
|--|--|
| <b>A</b> WEST ADAMS W.S.C.<br>Construction/Security                            | <b>J</b> WATTS/LOS ANGELES W.S.C.<br>Construction/Healthcare             |
| <b>B</b> BOYLE HEIGHTS / EAST W.S.C.<br>Healthcare/Security                    | <b>K</b> WEST L.A. W.S.C.<br>Financial Services/Security                 |
| <b>C</b> CANOGA PARK/ SOUTH VALLEY W.S.C.<br>Healthcare/Advanced Manufacturing | <b>L</b> CRENSHAW W.S.C.<br>Healthcare/Hospitality                       |
| <b>D</b> WEST VALLEY W.S.C.<br>Healthcare/Logistics                            | <b>M</b> HOLLYWOOD W.S.C.<br>Healthcare/Security                         |
| <b>E</b> WILSHIRE-METRO W.S.C.<br>Logistics/ Advanced Manufacturing            | <b>N</b> DOWNTOWN/PICO UNION W.S.C.<br>Healthcare/Financial Services     |
| <b>F</b> HARBOR GATEWAY W.S.C.<br>Healthcare/Logistics                         | <b>O</b> SOUTH LOS ANGELES W.S.C.<br>Construction/Advanced Manufacturing |
| <b>G</b> VERNON CENTRAL/LATTC W.S.C.<br>Construction/Hospitality               | <b>P</b> SOUTHEAST LOS ANGELES W.S.C.<br>Construction/Healthcare         |
| <b>H</b> SUN VALLEY W.S.C.<br>Logistics/Healthcare                             | <b>Q</b> PACOIMA/NORTH VALLEY W.S.C.<br>Healthcare/Financial Services    |
| <b>I</b> NORTHEAST L.A. W.S.C.<br>Hospitality/Manufacturing/Security           |  |

### Los Angeles Unified School District

- |   |  |
|---|--|
| <b>1</b> MAIN CAMPUS<br>Abram Friedman Occupational Center    | <b>7</b> MAIN CAMPUS<br>Los Angeles Technology Center    |
| <b>2</b> MAIN CAMPUS<br>East LA Occupational Center           | <b>8</b> MAIN CAMPUS<br>Maxine Waters E.P.C.             |
| <b>3</b> MAIN CAMPUS<br>East LA Skills Center                 | <b>9</b> MAIN CAMPUS<br>North Valley Occupational Center |
| <b>4</b> MAIN CAMPUS<br>Evans Community Adult School          | <b>10</b> MAIN CAMPUS<br>West Valley Occupational Center |
| <b>5</b> MAIN CAMPUS<br>Harbor Occupational Center            | <b>11</b> MAIN CAMPUS<br>Venice Skills Center            |
| <b>6</b> MAIN CAMPUS<br>Stawson Southeast Occupational Center |  |



# Key Takeaways







Thanks for your  
Time!

Go Forth and  
Partner!

Dr. Carolyn Zachry:  
[CZachry@cde.ca.gov](mailto:CZachry@cde.ca.gov)

Bob Lanter:  
[blanter@calworkforce.org](mailto:blanter@calworkforce.org)

