

CASAS[®]

Catalog 2025

Assessments, Resources, Support

Let CASAS
Be Your
Compass!



Assessments for the whole adult student journey

www.casas.org/order

Welcome to Our CASAS Catalog!

Use online ordering for faster service.



Order online (*faster!*)

Visit: www.casas.org/order



Questions?

orders@casas.org

800-255-1036, option 3



Email

Citizenship CIT@casas.org

California Accountability capm@casas.org

General questions info@casas.org

Shipping and payment orders@casas.org

Technical and software techsupport@casas.org

Training Workshops training@casas.org

Workforce eworks@casas.org



Call

800-255-1036

858-292-2900

CASAS is a nonprofit organization. Purchase of CASAS materials supports ongoing technical assistance, continued research and development, test validity and reliability analyses, and additional support services provided by CASAS staff and CASAS certified trainers.

Contents	3
Placement Testing	4
Progress Testing	5
Training Requirements	5
Online Testing CASAS eTests	6
TOPSpro Enterprise	7
Reading STEPS Series	8
Listening STEPS Series	9
Math GOALS 2 Series	10
Reading GOALS 2 Series	11
Reading GOALS Series	12
Life and Work Reading Series	13
Life and Work Listening 980 Series	14
Citizenship	15
Spanish Reading Comprehension	16
Answer Sheets	17
National External Diploma Program® (NEDP)	19
Workforce	20
Workplace Speaking	21
Writing Assessments	22
Correctional Education	23
Accommodations Materials for Visual Impairment/Blindness	24
Large-Print Test Booklets, Answer Sheets Braille Reading Assessment	25
Special Needs	26
CASAS Assessments Approved for NRS	27
Index	28

Be sure you always choose placement tests and progress tests from the same series.

Here are the test series that offer pretests and post-tests to monitor learning progress.

Check the specific pages next to each test series for more details, *including National Reporting System (NRS) approval status.*



Keep in Mind!

The STEPS series is for ESL.

The GOALS series is for ABE/ASE.

Placement Testing (Appraisals and Locators*)

ESL Appraisals

Reading STEPS ([page 8](#))

Listening STEPS ([page 9](#))

Life and Work Reading ([page 13](#))

Life and Work Listening ([page 14](#))

ABE/ASE Appraisals

Math GOALS 2 ([page 10](#))

Reading GOALS 2 ([page 11](#)) *Newest!*

Reading GOALS ([page 12](#))

Remember!

Placement tests can never be used to monitor progress. Only progress tests (pre- and post-tests) can do that.

****Locators are available only for online testing with CASAS eTests.***

CASAS assessments map your students' existing skills, and together you can design a unique pathway for success.

Let **CASAS** Be Your  mpass!

Questions? info@casas.org

Progress Testing (Pretests and Post-Tests)

ESL Progress Tests

Reading STEPS ([page 8](#))

Listening STEPS ([page 9](#))

Life and Work Reading ([page 13](#))

Life and Work Listening ([page 14](#))

Beginning Literacy Reading ([page 13](#))

Reading for Citizenship ([page 15](#))

Spanish Reading Comprehension ([page 16](#))



CASAS eTests



Booklets

ABE/ASE Progress Tests

Math GOALS 2 ([page 10](#))

Reading GOALS 2 ([page 11](#)) *Newest!*

Reading GOALS ([page 12](#))

Special Needs

Supplemental Materials for Visual Impairment/Blindness ([page 24](#))

Braille Reading Assessment ([page 25](#))

POWER Testing ([page 26](#))

Training Requirements

CASAS requires all new agencies to complete any required training prior to ordering.

CASAS offers complimentary self-paced online training 7 days a week, 24 hours a day. To get started with online testing or paper tests go to:

ONLINE TRAINING

Be sure to consult the **Assessment Policy for CASAS Implementation in your state** for training requirements, including the recertification timeline established by your state.

Questions? training@casas.org



Learn more about CASAS eTests by visiting:
['Going Live' Checklist.](#)

Order CASAS eTests and get TOPSpro Enterprise software at no extra charge!

<https://tinyurl.com/order-eTests>

Locators and Appraisals in CASAS eTests

- Reading STEPS
- Listening STEPS
- Math GOALS 2
- Reading GOALS 2 *Newest!*
- Reading GOALS
- Life and Work Reading
- Life and Work Listening

Progress Tests in CASAS eTests

- Reading STEPS
- Listening STEPS
- Math GOALS 2
- Reading GOALS 2 *Newest!*
- Reading GOALS
- Life and Work Reading
- Life and Work Listening
- Reading for Citizenship
- Government and History for Citizenship
- CASAS eWORKs
- Essay Test
- Spanish Reading Comprehension





Order **CASAS eTests** and get **TOPSpro Enterprise** software at *no extra charge!*

Ordering Information

Test units do not expire and are not specific to any tests.

Please note that a \$15 processing fee is added to all CASAS eTests orders.

Minimum order of 100 WTUs or TEUs.

CASAS cannot accept returns on WTUs or TEUs.

<https://tinyurl.com/order-TOPSpro>



TE Basic Package

Supports student-level implementation

Basic Web-test Units (WTUs)

Quantity	Code	Price each
100 - 500	WTU-0001	\$3.50
501-1000		\$2.80
1001-5000		\$2.60
5001+		\$1.95



TE Enhanced Package

Supports student, class, program, and accountability-level implementation

Enhanced TOPSpro Enterprise Units (TEUs)

Quantity	Code	Price each
100 - 500	TEU-0001	\$3.80
501-1000		\$3.10
1001-5000		\$2.85
5001+		\$2.60

Order Reading STEPS online tinyurl.com/order-Reading-STEPS

NRS Approved for ESL

CASAS eTests

Booklets

Reading STEPS tests measure reading comprehension skills of adults by assessing a subset of what ESL programs teach. The series is aligned with the National Reporting System (NRS) Educational Functioning Levels (EFLs) and to the English Language Proficiency Standards for Adult Education (2017). The series uses a balance of life skills and employment-related content of interest to adults.

Target Population	English As a Second Language
Timing	Locator 620R: 15 minutes; Appraisal 619R: 30 minutes Level A: 30 mins; Level B: 50 mins; Levels C-E: 75 mins.
Uses	Progress testing in reading comprehension of daily life and workplace conversations and situations
Placement Tests	Locator Form 620R (online only) or Appraisal Form 619R
Training Requirement	http://training.casas.org/

	Code	Price
Step 1: Screening, Placement, Determining Program Eligibility		
• Reading STEPS Test Administration Manual. Order at least one manual per agency site.	TAMSSTEPSR	\$55.00
• Appraisal Test Booklets Form 619R (set of 10)	STEPSARS10	\$55.00
• Appraisal Test Booklets Form 619R (set of 25)	STEPS619RA	\$125.00
Step 2: Documenting Progress/Accountability		
• Forms 621R-630R (set of 5 each)	STEPSRS05	\$287.50
• Forms 621R-630R (set of 10 each)	STEPSRS10	\$550.00
Reading (set of 25 color test booklets)		
• Level A, Form 621R	STEPS621R	\$125.00
• Level A, Form 622R	STEPS622R	\$125.00
• Level B, Form 623R	STEPS623R	\$125.00
• Level B, Form 624R	STEPS624R	\$125.00
• Level C, Form 625R	STEPS625R	\$125.00
• Level C, Form 626R	STEPS626R	\$125.00
• Level D, Form 627R	STEPS627R	\$125.00
• Level D, Form 628R	STEPS628R	\$125.00
• Level E, Form 629R	STEPS629R	\$125.00
• Level E, Form 630R	STEPS630R	\$125.00
Step 3: Scoring – Answer Sheets		
• TOPSpro Student Test Record (set of 100)	TRUS019	\$75.00
• General Purpose Answer Sheets (set of 100)	ANS001	\$75.00
• Self-Scoring Answer Sheet (STEPS) Appraisal Form 619R+619L (set of 25)	ANS600	\$55.00

Large Print Options (18 pt. font) available, see online ordering.

Order Listening STEPS online tinyurl.com/order-Listening-STEPS

NRS Approved for ESL

CASAS eTests

Booklets

Listening STEPS tests measure listening comprehension skills of adults by assessing a subset of what ESL programs teach. The series is aligned with the National Reporting System (NRS) Educational Functioning Levels (EFLs) and to the English Language Proficiency Standards for Adult Education (2017). The series uses a balance of life skills and employment-related content of interest to adults.

Target Population	English as a Second Language
Timing	Locator 620L: 15 minutes; Appraisal 619L: 30 minutes; Level A: 28 mins; Level B: 45 mins; Level C: 52 mins; Level D: 56 mins; Level E: 38 mins.
Uses	Progress testing in listening comprehension of daily life and workplace conversations and situations
Placement Tests	Locator Form 620L (online only) or Appraisal Form 619L
Training Requirement	http://training.casas.org/

	Code	Price
Step 1: Screening, Placement, Determining Program Eligibility		
• Listening STEPS Test Administration Manual. Order at least one manual per agency site.	TAMSSTEPSL	\$55.00
• Listening STEPS Appraisal Test CD Form 619L (one CD)	STEPS619LA	\$55.00
Step 2: Documenting Progress/Accountability		
• Forms 621L-630L (25 color test booklets and one CD for 621L and 622L Level A forms; one CD only for forms 623L to 630L)	STEPSTPL	\$660.00
• Level A, Form 621L (25 color test booklets; one CD)	STEPS621LB	\$125.00
• Level A, Form 622L (25 color test booklets; one CD)	STEPS622LB	\$125.00
Listening (one CD; no booklet)		
• Level A, Form 621L	STEPS621L	\$55.00
• Level A, Form 622L	STEPS622L	\$55.00
• Level B, Form 623L	STEPS623L	\$55.00
• Level B, Form 624L	STEPS624L	\$55.00
• Level C, Form 625L	STEPS625L	\$55.00
• Level C, Form 626L	STEPS626L	\$55.00
• Level D, Form 627L	STEPS627L	\$55.00
• Level D, Form 628L	STEPS628L	\$55.00
• Level E, Form 629L	STEPS629L	\$55.00
• Level E, Form 630L	STEPS630L	\$55.00
Step 3: Scoring – Answer Sheets		
• TOPSpro Student Test Record (set of 100)	TRUS019	\$75.00
• General Purpose Answer Sheets (set of 100)	ANS001	\$75.00
• Self-Scoring Answer Sheet (STEPS) Appraisal Form 619R+619L (set of 25)	ANS600	\$55.00

Large Print Options (18 pt. font) available, see online ordering.

Order Math GOALS 2 online tinyurl.com/order-Math-GOALS-2

NRS Approved for ABE and ASE

CASAS eTests

Booklets

Math GOALS 2 measures academic and higher-order math skills.

The series is a balance of life skills and workplace-related math with content of practical use to adults.

Target Population	Adult Basic Education and Adult Secondary Education
Timing	Locator 920M: 15 minutes; Appraisal 919M: 30 minutes; Level A: 50 mins; Level B: 65 mins; Level C: 75 mins; Level D: 75 mins; Level E: 90 mins.
Uses	Progress testing mathematics skills in daily life and workplace situations
Placement Tests	Locator Form 920M (online only) or Appraisal Form 919M
Training Requirement	http://training.casas.org/

	Code	Price
Step 1: Screening, Placement, Determining Program Eligibility		
• Math GOALS 2 Test Administration Manual. Order at least one manual per agency site.	TAMSGOALS2M	\$55.00
• Appraisal Test Booklets Form 919M (set of 10)	GOALS2AMS10	\$55.00
• Appraisal Test Booklets Form 919M (set of 25)	GOALS2919MA	\$125.00
Step 2: Documenting Progress/Accountability		
• Forms 921M-930M (set of 5 each)	GOALS2MS05	\$287.50
• Forms 921M-930RM (set of 10 each)	GOALS2MS10	\$550.00
Math (set of 25 color test booklets)		
• Level A, Form 921M	GOALS2921M	\$125.00
• Level A, Form 922M	GOALS2922M	\$125.00
• Level B, Form 923M	GOALS2923M	\$125.00
• Level B, Form 924M	GOALS2924M	\$125.00
• Level C, Form 925M	GOALS2925M	\$125.00
• Level C, Form 926M	GOALS2926M	\$125.00
• Level D, Form 927M	GOALS2927M	\$125.00
• Level D, Form 928M	GOALS2928M	\$125.00
• Level E, Form 929M	GOALS2929M	\$125.00
• Level E, Form 930M	GOALS2930M	\$125.00
Step 3: Scoring – Answer Sheets		
• TOPSpro Student Test Record (set of 100)	TRUS019	\$75.00
• General Purpose Answer Sheets (set of 100)	ANS001	\$75.00
• Self-Scoring Answer Sheet (GOALS & GOALS 2) Appraisal Form 900R+919M (set of 25)	ANS900R919M	\$55.00
• Self-Scoring Answer Sheet (Reading and Math GOALS 2) Appraisal Form 919R+919M (set of 25)	ANS2919R919M	\$65.00

Large Print Options (18 pt. font) available, see online ordering.

Order Reading GOALS 2 online tinyurl.com/order-Reading-GOALS-2

NRS Approved for ABE and ASE

CASAS eTests

Booklets

The CASAS Reading GOALS 2 (Greater Opportunities for Adult Learning Success) assessment is aligned with the College and Career Readiness (CCR) Standards for Adult Education and includes 5 test levels to support improved accuracy and better student outcomes.

Target Population	Adult Basic Education and Adult Secondary Education
Timing	Locator 920R: 20 minutes; Appraisal 919R: 30 minutes; Level A: 35 minutes; Level B: 60 minutes; Levels C, D, E: 70 minutes
Uses	Progress testing reading comprehension skills in daily life and workplace situations
Placement Tests	Locator Form 920R (online only) or Appraisal Form 919R
Training Requirement	http://training.casas.org/

	Code	Price
Step 1: Screening, Placement, Determining Program Eligibility		
• Reading GOALS 2 Test Administration Manual. Order at least one manual per agency site.	TAMSGOALS2R	\$55.00
• Appraisal Test Booklets Form 919R (set of 10)	GOALS2ARS10	\$55.00
• Appraisal Test Booklets Form 919R (set of 25)	GOALS2919RA	\$125.00
Step 2: Documenting Progress/Accountability		
• Forms 921R-930R (set of 5 each)	GOALS2RS05	\$287.50
• Forms 921R-930R (set of 10 each)	GOALS2RS10	\$550.00
Reading (set of 25 color test booklets)		
• Level A, Form 921R	GOALS2921R	\$125.00
• Level A, Form 922R	GOALS2922R	\$125.00
• Level B, Form 923R	GOALS2923R	\$125.00
• Level B, Form 924R	GOALS2924R	\$125.00
• Level C, Form 925R	GOALS2925R	\$125.00
• Level C, Form 926R	GOALS2926R	\$125.00
• Level D, Form 927R	GOALS2927R	\$125.00
• Level D, Form 928R	GOALS2928R	\$125.00
• Level E, Form 929R	GOALS2929R	\$125.00
• Level E, Form 930R	GOALS2930R	\$125.00
Step 3: Scoring – Answer Sheets		
• TOPSpro Student Test Record (set of 100)	TRUS019	\$75.00
• General Purpose Answer Sheets (set of 100)	ANS001	\$75.00
• Self-Scoring Answer Sheet (Reading and Math GOALS 2) Appraisal Form 919R+919M (set of 25)	ANS2919R919M	\$65.00

Large Print Options (18 pt. font) available, see online ordering.

Order Reading GOALS online <https://tinyurl.com/29wdfu57>

NRS Approved for ABE and ASE

CASAS eTests

Booklets

Reading GOALS measures academic language and higher-order reading skills contained in the National Reporting System (NRS) Educational Functioning Levels (EFLs).

The series uses a balance of life skills and employment-related content of interest to adults.

Target Population	Adult Basic Education and Adult Secondary Education
Timing	Locator 104R: 15 minutes; Appraisal 900 R:30 minutes Level A: 60 minutes; Levels B, C, D: 75 minutes
Uses	Progress testing in reading comprehension of daily life and workplace conversations and situations
Placement Tests	Locator 104R (online only) or Form 900R Reading GOALS Appraisal
Training Requirement	http://training.casas.org/

Step 1: Screening, Placement, Determining Program Eligibility

Reading GOALS Test Administration Manual. Order at least one manual per agency site.	TAMSGOALSR	\$45.00
Appraisal Test Booklets Form 900R (set of 10)	GOALSARS10	\$55.00
Appraisal Test Booklets Form 900R (set of 25)	GOALS900R	\$110.00

Step 2: Documenting Progress/Accountability

• Forms 901R-908R (set of 5 each)	GOALSRS05	\$210.00
• Forms 901R-908R (set of 10 each)	GOALSRS10	\$375.00
Reading (set of 25 color test booklets)		
• Level A, Form 901R	GOALS901R	\$110.00
• Level A, Form 902R	GOALS902R	\$110.00
• Level B, Form 903R	GOALS903R	\$110.00
• Level B, Form 904R	GOALS904R	\$110.00
• Level C, Form 905R	GOALS905R	\$110.00
• Level C, Form 906R	GOALS906R	\$110.00
• Level D, Form 907R	GOALS907R	\$110.00
• Level D, Form 908R	GOALS908R	\$110.00

Step 3: Scoring – Answer Sheets

• Self-Scoring GOALS Appraisal Form 900R (set of 25)	ANS900	\$55.00
• Self-Scoring (GOALS & GOALS 2) Appraisal Form 900R + 919M (set of 25)	ANS900R919M	\$55.00
• TOPSpro Student Test Record (set of 100)	TRUS019	\$75.00
• General Purpose Answer Sheets (set of 100)	ANS001	\$75.00

CASAS offers test materials for individuals with visual impairment/blindness. [See p. 25](#)

Order Life and Work Reading online <https://tinyurl.com/vrx94zfw>

NRS Approved for ESL through June 30, 2025

CASAS eTests

Booklets

Target Population	English As a Second Language
Timing	Locator 102R: 15 minutes; Appraisal 80R: 30 minutes; Level A: 60 minutes; Levels B, C, D: 75 minutes
Uses	Progress testing in everyday life and workplace reading skills
Placement Test	Locator 102R (online only) or Form 80R Appraisal
Training Requirement	http://training.casas.org/

Code	Price
------	-------

Step 1: Screening, Placement, Determining Program Eligibility

Test Administration Manual for Life and Work Reading. Order at least one manual per agency site.	TAMSLW	\$30.00
Form 80 Test Administration Manual for Reading and Listening	LRMLMAN	\$95.00
Form 80 Appraisal Test Booklet (set of 25)	LWR080	\$95.00

Step 2: Documenting Progress/Accountability

Beginning Literacy Reading

(set of 25, consumable; scoring packet included at no charge)

• Form 27	BLRA027	\$70.00
• Form 28	BLRA028	\$70.00

Life and Work Reading (set of 25)

• Level A, Form 81	LWR081	\$95.00
• Level A, Form 81X	LWRX081	\$95.00
• Level A, Form 82	LWR082	\$95.00
• Level A, Form 82X	LWRX082	\$95.00
• Level B, Form 83	LWR083	\$95.00
• Level B, Form 84	LWR084	\$95.00
• Level C, Form 185	LWR185	\$95.00
• Level C, Form 186	LWR186	\$95.00
• Level D, Form 187	LWR187	\$95.00
• Level D, Form 188	LWR188	\$95.00
• Forms 81-188 (set of 5 each)	LWRS05	\$215.00
• Forms 81-188 (set of 10 each)	LWRS10	\$400.00
• Level C, Form 85 (workplace-focused)	LWR085	\$95.00
• Level C, Form 86 (workplace-focused)	LWR086	\$95.00

Step 3: Scoring – Answer Sheets

• Self-Scoring Answer Sheet Appraisal Form 80 (set of 25)	ANS080	\$55.00
• TOPSpro Student Test Record (set of 100)	TRUS019	\$75.00
• General Purpose Answer Sheets (set of 100)	ANS001	\$75.00

CASAS offers test materials for individuals with visual impairment/blindness. [See p. 25](#)

Order Life and Work Listening online <https://tinyurl.com/mu5srheu>

NRS Approved for ESL through June 30, 2025

CASAS eTests

Booklets



Target Population	English As a Second Language
Timing	Locator 089L: 15 minutes; Appraisal 80L: 30 minutes; Level A-C: 60 minutes
Uses	Progress testing in listening comprehension of daily life and workplace conversations and situations
Difficulty Level	Three levels from beginning ESL literacy (Level A) to advanced ESL (Level C)
Placement Tests	Locator 089L (online only) or Form 80L Appraisal
Training Requirement	http://training.casas.org/

Code	Price
------	-------

Step 1: Screening, Placement, Determining Program Eligibility

Test Administration Manual for Life and Work Listening 980 Series. Order at least one manual per agency site.	TAM9LWL	\$30.00
---	---------	---------

Step 2: Documenting Progress/Accountability

Testing Package with Appraisal (includes these items) <ul style="list-style-type: none"> • Form 80 Appraisal Test Administration Manual • Form 80 Appraisal Listening Test CD (one) • Form 80 Appraisal Reading Test Booklets (set of 25) • Level A, Forms 981 and 982 (one CD each form; 25 color test booklets each form) • Level B, Forms 983 and 984 (one CD each form; no booklets) • Level C, Forms 985 and 986 (one CD each form; no booklets) 	LWL9PAC	\$535.00
Testing Package (without Appraisal) (includes these items) <ul style="list-style-type: none"> • Level A, Forms 981 and 982 (one CD each form; 25 color test booklets each form) • Level B, Forms 983 and 984 (one CD each form; no booklets) • Level C, Forms 985 and 986 (one CD each form; no booklets) 	LWL9S25	\$395.00
Additional Level A Set		
• Level A, Form 981 (one CD each; 25 color test booklets)	CLWL981	\$110.00
• Level A, Form 982 (one CD each; 25 color test booklets)	CLWL982	\$110.00
• Level A, Form 981 (25 color test booklets)	LWL9981	\$50.00
• Level A, Form 982 (25 color test booklets)	LWL9982	\$50.00
Additional CDs (one CD per test)		
• Level A, Form 981	CDL981	\$55.00
• Level A, Form 982	CDL982	\$55.00
• Level B, Form 983	CDL983	\$55.00
• Level B, Form 984	CDL984	\$55.00
• Level C, Form 985	CDL985	\$55.00
• Level C, Form 986	CDL986	\$55.00

Step 3: Scoring – Answer Sheets

• Self-Scoring Answer Sheet Appraisal Form 80 (set of 25)	ANS080	\$55.00
• TOPSPro Student Test Record (set of 100)	TRUS019	\$75.00
• General Purpose Answer Sheets (set of 100)	ANS001	\$75.00

Are your students prepared for the citizenship process and the US Citizenship and Immigration Services (USCIS) interview?

These CASAS assessments help you answer that question.



Reading for Citizenship

Order Reading for Citizenship online <https://tinyurl.com/yr42ut3z>

NRS Approved for ESL through June 30, 2025* CASAS eTests Booklets

Timing	60 minutes		
Uses	Progress testing in a citizenship-related context		
Difficulty Level	Beginning literacy (Level A) and high beginning literacy (Level AX)		
Training Requirement	http://training.casas.org/		
		Code	Price
Reading for Citizenship Test Administration Directions (with answer keys, scoring information, test administration directions)		----	Included at no charge
Reading for Citizenship Level A, Form 951R (set of 25)		CIR951	\$95.00
Reading for Citizenship Level A, Form 952R (set of 25)		CIR952	\$95.00
Reading for Citizenship Level AX, Form 951RX (set of 25)		CIRX951	\$95.00
Reading for Citizenship Level AX, Form 952RX (set of 25)		CIRX952	\$95.00

*After June 30, 2025, agencies reporting to NRS can use the [Reading STEPS](#) series.

Government and History for Citizenship

Order Government and History for Citizenship online <https://tinyurl.com/2s42fw84>

CASAS eTests Booklets

Timing	25 minutes (Test Administration Manual and CD required to administer the test)		
Uses	Progress testing of American government and history knowledge		
Difficulty Level	Intermediate English As a Second Language		
		Code	Price
Government and History Test Administration Manual with two CDs		CIGHTAM	\$95.00
Government and History Test Booklets Form 965 (set of 25)		CIGH965	\$95.00
Government and History Test Booklets Form 966 (set of 25)		CIGH966	\$95.00
Additional CD (optional) Form 965		CD965	\$55.00
Additional CD (optional) Form 966		CD966	\$55.00
Answer Sheets TOPSpro Student Test Record (set of 100)		TRUS019	\$75.00
General Purpose Answer Sheets (set of 100)		ANS001	\$75.00

Citizenship Interview Test

Order Citizenship Interview Test online <https://tinyurl.com/ycxp4tpa>

Online Certification

Booklets

Timing	15-30 minutes
Uses	One-on-one oral interview simulating the USCIS interview
Difficulty Level	High beginning to advanced English As a Second Language
Training Requirement	http://training.casas.org/

	Code	Price
CIT Certification Training (Open July 1 to April 30)	CITCTO	\$150.00
Citizenship Interview Test Form 973 (set of 25; consumable)	CIT973	\$60.00
Citizenship Interview Test Form 974 (set of 25; consumable)	CIT974	\$60.00
Annual Recertification for CIT (Open January to April 30)	ARCCIT	\$75.00

Spanish Reading Comprehension

Evaluación De Comprensión De La Lectura

Evaluación De Comprensión De La Lectura online

<https://tinyurl.com/spanish-assessment>

CASAS eTests 

Target Population	Native Spanish speakers or anyone learning Spanish
Timing	Not a timed test. 50 to 60 minutes recommended.
Uses	Readiness for Spanish High School Equivalency exam or program, Spanish vocational training, or progress testing in a Spanish language class
Difficulty Level	From 3 to 9 years of schooling in most Spanish-speaking nations

Test Administration Directions for the Spanish test are available at no cost on [our website](#).

↑

ID:

Name:

Form: 653R

Time Remaining: 00:50:00

Practice 1 of 2 →

¿Cuál es la nueva hora de salida?

☐ Las 7:45 a.m.

☐ Las 7:45 p.m.

☐ Las 2:10 p.m.

☐ La misma de antes

CAMBIO DE HORARIO

A partir de septiembre, la entrada a clases será a las 7:45 a.m. y la salida a las 2:10 p.m.

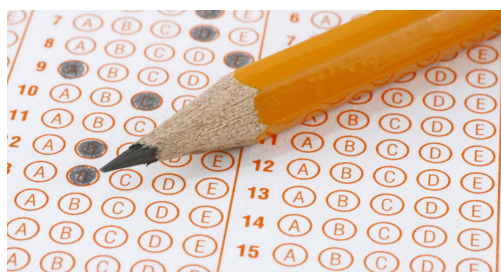
Appraisal Answer Sheets **Not for use with TOPSpro Enterprise software, not for scanning**

Order Answer Sheets online <https://tinyurl.com/2p96suup>

For Booklets

Two-part self-scoring answer sheets with bottom carbon sheet that contains answer keys and score conversion charts (set of 25)

	Code	Price
Form 900 Reading and Math Appraisal Answer Sheets (set of 25)	ANS900	\$55.00
Form 80 Appraisal Answer Sheets (set of 25)	ANS080	\$55.00
Form 900R+919M Appraisal Self-Scoring Answer Sheet (Reading GOALS and Math GOALS 2) (set of 25)	ANS900R919M	\$55.00
Self-Scoring Answer Sheet (Reading GOALS 2 and Math GOALS 2) Appraisal Form 919R+919M (set of 25)	ANS2919R919M	\$65.00
Self-Scoring Answer Sheet (STEPS) Appraisal Form 619R+619L (set of 25)	ANS-600	\$55.00



General Purpose Answer Sheets **Not for use with TOPSpro Enterprise**

For Booklets

General Purpose Answer Sheets for appraisals, pre- and post-tests, and certification tests.

Option #1 – For those who manually correct tests, need to administer up to four tests per answer sheet, or need to collect demographic information on each answer sheet. **Not for scanning** (set of 100)

Option #2 – For those who manually correct tests, scan test information using Scantron 888 series stand-alone scanners ONLY, administer only two tests, or need to collect demographic information on each answer sheet (set of 100)

Code	Price
ANS-001	\$75.00
ANS-002	\$75.00

Large-Print Test Booklets and Answer Sheets

For Booklets

Test booklets available in large print at \$50 per booklet. Indicate test form number and write “large print” on order form.

General Purpose Answer Sheets for all CASAS tests (tablet of 100)

Code	Price
----	\$50.00 each
ANSL001	\$40.00

TOPSpro Enterprise Answer Sheets

Order Answer Sheets online <https://tinyurl.com/2p96suup>

CASAS eTests

TOPSpro Enterprise answer sheets gather demographic, testing, program, and accountability information. They simplify data collection for many federal reporting requirements.

See pages 6-7 for software capability and reporting functions of TOPSpro Enterprise and CASAS eTests.

	Code	Price
TOPSpro Enterprise Student Test Record (brown) <ul style="list-style-type: none"> • Use with any CASAS pre- or post-test 	TRUS019	\$75.00
Entry/Update Record (blue/green) <ul style="list-style-type: none"> • Two-sided form for entry and update data • Entry – Student demographics, instructional program and level data, reason for enrollment • Update – Student progress and results after instructional intervention 	EUUS019	\$75.00
Form 80/130 Appraisal Test Record (green/purple) <ul style="list-style-type: none"> • Side One – For Form 80 Appraisal • Side Two – For ECS Form 130 Appraisal 	APUS019	\$75.00
Supplemental Entry/Update Record-Workforce (gray/red) <ul style="list-style-type: none"> • Supplements Entry/Update Record by collecting workforce and employment-related data • Includes pre-employment, work maturity skills achieved, support services needs, assessment, wages, and income 	WSUS019	\$75.00
Entry/Test Record (blue/brown) <ul style="list-style-type: none"> • Combines the Entry Record on one side and Test Record on the other 	ETUS019	\$75.00
Update/Test Record (brown/green) <ul style="list-style-type: none"> • Combines the Update Record on one side and Test Record on the other 	UTUS019	\$75.00
Consumer Profile Record (gray/green) <ul style="list-style-type: none"> • For programs implementing POWER assessment and TOPSpro Enterprise • Provides Entry and Demographic record and POWER observation information 	COUS019	\$75.00

For information about scanners and TOPSpro Enterprise visit:

<http://tinyurl.com/TE-requirements>

 This is a form titled 'Form 80 Reading, Listening, Math Appraisal'. It contains various sections for recording student information, including a header with 'TOPS' and 'Form 80', and several tables and checkboxes for data entry.

 This is a form titled 'Update Record'. It features a header with 'TOPS' and 'Update Record', followed by multiple tables and checkboxes for recording student progress and results after instructional intervention.

 This is a form titled 'Entry Record'. It includes a header with 'TOPS' and 'Entry Record', and contains several tables and checkboxes for recording student demographics and instructional program data.

 This is a form titled 'Test Record'. It has a header with 'TOPS' and 'Test Record', and contains multiple tables and checkboxes for recording test results and other assessment data.

A UNIQUE PATHWAY TO A HIGH SCHOOL DIPLOMA



- Competency-based, applied performance assessment
- Focuses on life and work skills
- Encourages critical thinking
- Offered remotely or face-to-face
- Aligned to College and Career Readiness Standards
- Provides an emphasis on digital literacy

Web Enrollment Unit - Diagnostics

Web Enrollment Unit - Generalized Assessment

Code	Price
WEUD	\$75.00
WEUGA	\$75.00

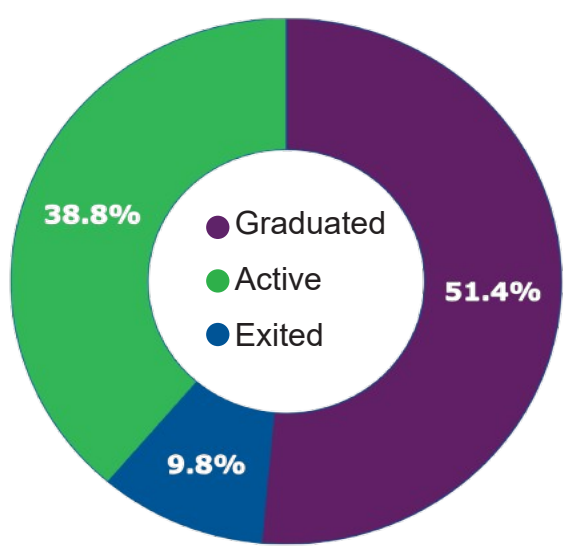
NEDP meets the unique needs of adult diploma seekers in nearly 100 agencies across nine states.



Interested in learning more about NEDP?
Visit www.nedp.org or email nedp@casas.org



Latisha from Gerard Place



Sonia from ON BOCES

Share your NEDP stories and connect with #NEDP #AdultEdu #NEDPChangingLives

Order CASAS eWORKs online <https://tinyurl.com/order-eWORKs>

CASAS eTests

CASAS eWORKs assesses work-related and employer-validated academic skills with CASAS eTests, and assesses soft skills (personal qualities, work habits, attitude) with the Alignmark online module.

You can generate a work-readiness CASAS eWORKs Profile and Certificate from TOPSpro Enterprise software that job candidates can present at interviews. Adult education providers use the CASAS eWORKs Profile to guide instruction and certify skills at any level.

Target Population Individuals seeking to enter or re-enter the workforce or entry-level workers

- Uses**
- Helps target instruction
 - Helps employers evaluate potential and incumbent workers
 - Informs employers of reading, math, critical thinking, problem solving, and soft-skills proficiency

CASAS eWORKs 1. Implement CASAS eTests

Certification 2. Implement CASAS Teacher Portal

Process 3. Order CASAS eWORKs

4. Schedule CASAS eWORKs Implementation Training

CASAS eWORKs • Online assessment of reading, math, critical thinking, and problem solving

Certification • Online assessment of soft skills testing using Alignmark Customer Care and

Package Includes Personal Qualities Modules

- CASAS eWORKs Profile, CASAS eWORKs Certificate, and student-level feedback reports for reading, math, and soft skills

Training CASAS eWORKs Implementation Training

Requirement (available via webinar or at Summer Institute)

CASAS eWORKs Annual License Fee

Agencies may order an annual license based on their estimated number of clients.

This annual fee runs from July 1 to June 30. Please contact CASAS eWORKs at eworks@casas.org.

Visit the [CASAS eWORKs Online Ordering Guidelines webpage](#)

CASAS eWORKs Units

Alternatively, agencies may order individual CASAS eWORKs units.

	Code	Quantity	Price each
CASAS eWORKs Units	EWORKS001	10 - 99	\$35
		100 - 300	\$32
		301 - 500	\$29
		501 - 750	\$26
		751 - 1000	\$23



CASAS eWORKs Profile

CASAS Page 2 of 5
4/18/24
17:51:11

eWORKs Profile

The following workforce skills have been identified by the individual's responses to employer-validated and nationally normed assessments.
More detailed information can be found at www.casas.org (academic) and at www.allozmark.com (soft skills).

Work-related Academic Skills

Basic						Advanced	
1	2	3	4	5	6		
						Reading	
						Can read texts at the high school level and use academic vocabulary and idiomatic language with increasing ease.	
						Can interpret the meaning of complex content containing some scientific or technical terms and symbols.	
						Can also determine the order of events and causal relationships among these events.	
						With training or support, can also undertake procedures that involve comprehending complex work-related texts such as detailed reports and proposals, manuals, operating instructions, policies, and regulations.	
						Math	
						Can solve multistep, real-world mathematical problems using rational numbers.	

Soft Skills

Basic						Advanced	
1	2	3	4	5	6		
						Personal Quality Skills demonstrated	
						Integrity	
						Has the opportunity to break a rule and get away with it, but decides to follow the rule.	
						Tries to stop others who are about to break a rule. Reminds them of the rules and what could happen if they get caught. Will go to a manager or supervisor if necessary.	
						Responsibility	
						Tries to keep private life from affecting work.	
						Doesn't say "That's not my job," when something unusual or unexpected comes up that needs to be done.	
						Willing to ask for help, more information or clearer instructions.	
						Recognizes quality work, ready to go the extra mile to make sure the job gets done right.	
						Makes sure the job is done before leaving, does not leave extra work for next shift.	
						Self-Esteem	
						Stands up for self where appropriate; yet, doesn't take it personally when a manager points out incomplete or poorly done work; accepts suggestions for ways to do the job better.	
						Willing to try new things, learn new skills and ask for help when needed.	

© 2024 by CASAS. All rights reserved.



We recommend agencies have at least one month of experience with online testing before implementing CASAS eWORKs.

CASAS eWORKs Certificate

CASAS Page 1 of 5
4/18/24
17:51:11

eWORKs CASAS
Pathway Certificate

This certifies that
Madison Piri
has demonstrated the skill levels shown below.
Congratulations!
Rolling Hills Adult School (RHAS)

Authorized Signature _____ Date **4/18/2024**

Reading Level 5	Math Level 5	Customer Care Level 5	Personal Qualities Level 5
---------------------------	------------------------	---------------------------------	--------------------------------------

Workplace Speaking

Booklets



Order Workplace Speaking online <https://tinyurl.com/muwmas9f>

One-on-one oral assessment simulating common workplace conversations and vocabulary

Target Population	English As a Second Language
Timing	15-20 minutes
Uses	Measure on-the-job speaking skills
Classroom Use	Results guide workforce curriculum development and lesson planning
Difficulty Level	High beginning to advanced ESL
Training Requirement	Workplace Speaking Manual for self-training

Workplace Speaking Manual. Order at least one manual per agency site.

Workplace Speaking, Form 273 (set of 25; consumable)

Workplace Speaking, Form 274 (set of 25; consumable)

Code	Price
WSMAN	\$125.00
WS273	\$42.00
WS274	\$42.00



Essay Test – www.tinyurl.com/CASAS-Essay

CASAS eTests

Target Population	Programs offering Adult Basic Education, Adult Secondary Education, English as a Second Language, and Career Technical Education
Writing Skills Evaluated	Organization, word choice, development of ideas, grammar, and capitalization using an online word processor
Uses	Evaluate general writing strengths or measure progress in writing skills
Difficulty Level	Beginning to advanced writing skills
Training Requirement	http://training.casas.org/
	Automatic scoring with results available immediately to student and proctor

Functional Writing Assessment

Color Prompts

Order Functional Writing Assessment online <https://tinyurl.com/4pznzkex>

Target Population	Programs offering writing instruction
Writing Skills Focus	Content, word choice, grammar and sentence structure, punctuation, spelling, and capitalization
Uses	Determine general writing level or measure progress in writing skills
Difficulty Level	Beginning to advanced writing skills
Training Requirement	Writing training, use of writing rubric, and annotated scoring anchors (Contact CASAS for details)

	Code	Price
Functional Writing Assessment Manual – Picture Tasks 460-466	FWAPMAN	\$95.00
Life Skills Picture Task Prompts in Color (laminated, reusable, set of 25)		
• Form 460 (grocery store)	FWPC460	\$85.00
• Form 461 (accident)	FWPC461	\$85.00
• Form 462 (department store)	FWPC462	\$85.00
• Form 463 (park)	FWPC463	\$85.00
Workplace Picture Task Prompts in Color (laminated, reusable, set of 25)		
• Form 464 (restaurant)	FWPC464	\$85.00
• Form 465 (warehouse)	FWPC465	\$85.00
• Form 466 (hotel)	FWPC466	\$85.00
Picture Task Prompts in Color (laminated, reusable), set of 35 (5 each of the above 7 prompts)	FWPCS05	\$135.00
Picture Task Response and Scoring Sheet (pad of 100)	FWAPTRS	\$25.00
Picture Task Starter Kit Color contains Forms 460-463 (set of 25 each), Picture Task Response and Scoring Sheet (pad of 100), and the Functional Writing Assessment Manual	FWPCKIT	\$380.00

(Not for use by Bureau of Prisons. **BOP sites see below**)

Target Population	Inmates in state prisons, jails, and youth authority programs
Uses	Determine skill levels in reading, math, listening, writing, or high school subjects
Testing Options	Reading pp. 8, 11, Math p.10, Listening p. 9, Writing p. 21
Training Requirement	http://training.casas.org/

Federal Bureau of Prisons

Booklets

Order Federal Bureau of Prisons materials online <https://tinyurl.com/4tx4dyp9>

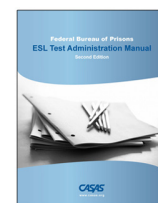
All BOP English As a Second Language programs must purchase at least one Starter Kit.

Target Population	Inmates in BOP English language and literacy programs
Uses	Identifying skills BOP inmates need for employment on release

Bureau of Prisons Starter Kit (contains these materials)

- BOP ESL **Placement** Test (includes a reading and a listening test)
25 test booklets and 100 answer sheets
- Life and Work **Reading** Pre- and Post-Tests
Forms 81, 83, 185 (25 test booklets for each test form)
Forms 82, 84, 186 (15 test booklets for each test form)
- Life and Work **Reading** Test Administration Manual
- Life and Work **Listening** Pre- and Post-Tests
Forms 81-86 (one CD each form; 25 picture-prompt test booklets for Forms 81 and 82)
Forms 83-86 (one CD each form; no booklets)
- Life and Work **Listening** Test Administration Manual
- Level C **Certification** Tests for Reading, Form 522 (25 test booklets)
- 100 General Purpose Answer Sheets to use with pre- and post-tests
- BOP Test Administration Manual

Code	Price
BOP-KIT	\$940.00



When You Need to Replenish Any Part of Your BOP Starter Kit

		Code	Price
BOP ESL Placement Test Booklets	• Form 1 (set of 25)	BOP001	\$90.00
	• Form 2 (set of 25)	BOP002	\$90.00
	• Form 3 (set of 25)	BOP003	\$90.00
BOP ESL Placement Test CDs	• Form 1 (one CD)	CDBP001	\$25.00
	• Form 2 (one CD)	CDBP002	\$25.00
	• Form 3 (one CD)	CDBP003	\$25.00
BOP ESL Placement Test Answer Sheets (set of 100)		ASBOP	\$75.00
Life and Work Reading and Life and Work Listening (see www.casas.org/product-overviews)			
• Level C Certification Tests for Reading, Form 522 (set of 25)		LSC522	\$85.00
• Level C Certification Tests for Reading, Form 523 (set of 25)		LSC523	\$85.00
• Level C Certification Tests for Reading, Form 524 (set of 25)		LSC524	\$85.00
• General Purpose Answer Sheets (set of 100)		ANS001	\$75.00
• BOP Test Administration Manual		BOPMAN	\$85.00

Supplemental Materials for Test Takers with Visual Impairment/Blindness

CASAS eTests

Booklets

Order VIB Materials online <https://tinyurl.com/mrj33vn7>

The Accommodations Materials for Visual Impairment/Blindness are supplements to the Test Administration Manual and test booklets for GOALS, GOALS 2, STEPS, and Life and Work Series.

- Includes supplemental guidelines and materials for administering the three test series
- Provides tactile graphics - including braille in images - for a selected number of test items.
- For use with paper-based and computer-based CASAS eTests
- All materials are reusable, including student Tactile Graphics/Braille test booklet
- For information go to <https://tinyurl.com/5n9xvy89>

Target Population

Adults who have visual impairment/blindness

Available Forms

Reading GOALS 2, Reading STEPS, Reading GOALS, Math GOALS 2, Listening STEPS, Life and Work Reading

These materials can be used to provide accommodations for test takers with other documented disabilities who require a human reader or use of a screen reader during assessments.

These products are a supplement to the test series Test Administration Manual. To use the Test Administration Supplements for Test Takers with Visual Impairment/Blindness, you must have both manuals.

	Code	Price
Reading GOALS 2 Forms 919R and 921R–930R		
<ul style="list-style-type: none"> • Reading GOALS 2 Test Administration Manual Supplement for Test Takers with Visual Impairment/Blindness • 1 set of test forms for the Reader/Scribe use – 1 copy each of Forms 919R and 921R – 930R • <i>There is not a tactile graphics/braille booklet for Reading GOALS 2</i> 	GOALS2RVIB	\$140.00
Reading STEPS Forms 619R–630R		
<ul style="list-style-type: none"> • Reading STEPS Test Administration Manual Supplement for Test Takers with Visual Impairment/Blindness • 1 set of test forms for the Reader/Scribe use – 1 copy each of Forms 619R and 621R – 630R • <i>There is not a tactile graphics/braille booklet for Reading STEPS</i> 	STEPSRVIB	\$140.00
Listening STEPS Forms 619L and 621L–630L		
<ul style="list-style-type: none"> • Listening STEPS Test Administration Manual Supplement for Test Takers with Visual Impairment/Blindness • 1 set of Level A test forms for the Reader/Scribe use – 1 copy each of Forms 621L and 622L • <i>There is not a tactile graphics/braille booklet for Listening STEPS</i> 	STEPSLVIB	\$45.00
Math GOALS 2 Forms 919M and 921M–930M		
<ul style="list-style-type: none"> • Math GOALS 2 Test Administration Manual Supplement for Test Takers with Visual Impairment/Blindness • 1 set of test forms for the Reader/Scribe use – 1 copy each of Forms 919M and 921M – 930M • Math GOALS 2 Tactile Graphics/Braille Supplement for Tests Takers with Visual Impairment/Blindness <p><i>This reusable booklet includes tactile graphics for a selected number of images on the test forms. Any text in the images is provided in braille. Test questions and answer options are provided via alt text only.</i></p>	GOALS2MVIB	\$659.00

Code

Price

Reading GOALS Forms 900R–908R

- Reading GOALS Test Administration Manual Supplement for Test Takers with Visual Impairment/Blindness*
- 1 set of test forms for Reader/Scribe use – 1 copy each of 900R-908R
- *There is not a tactile graphic/braille test booklet for Reading GOALS*

GOALSRVIB

\$75.00

Life and Work Reading Forms 83R, 84R, 185R, 186R

- Life and Work Reading Test Administration Manual Supplement for Test Takers with Visual Impairment/Blindness*
- 1 set of test forms for Reader/Scribe use – 1 copy each of 83R, 84R, 185R and 186R
- Life and Work Reading Tactile Graphics/Braille test booklet for Test Takers with Visual Impairment/Blindness

LWRVIB

\$120.00

Braille Reading Assessment**Booklets**

The Braille Reading Assessment is a stand-alone assessment for low-level learners with visual impairment/blindness. It is a customized test used to determine Life and Work Reading skills. This test is not NRS-approved.

Target Population Adults who have visual impairment/blindness

Timing 120 minutes

Format Contracted braille (not alphabet)

Difficulty Level Braille reading format from beginning literacy (Level A) to beginning basic skills (Level B)

Braille Reading Assessment Test Package Form 837 includes:

- One Test Administration Packet
- One braille test booklet
- One regular-print test form for test administrators
- 5 General Purpose Answer Sheets

Additional General Purpose Answer Sheets (set of 5)

Code

Price

BRAI837

\$60.00

ANS837

\$10.00

Large-Print Test Booklets and Answer Sheets

Test booklets available in large-print (18 pt. font) at \$50 per booklet. Indicate test form number and indicate “large print” on order form or online ordering.

General Purpose Answer Sheets (18 pt. font) for all CASAS tests (tablet of 100)

Code

Price

\$50.00 each

ANSL001

\$40.00

Testing Accommodations

For information about testing accommodations visit:

www.casas.org/training-and-support/testing-guidelines/accommodations-guidelines

Order Assessments for Special Needs online <https://tinyurl.com/2ypudaud>

POWER – Providing Options for the Workplace, Education, and Rehabilitation

Booklets

Target Population	Adults who have intellectual disabilities and do not read print
Timing	90 minutes
Uses	Measures pre-reading skills and reports performance levels using scale scores. POWER curriculum modules are linked to POWER assessment.
Classroom Use	Excellent resource for teaching strategies and lesson planning
Training Requirement	http://training.casas.org/

	Code	Price
POWER Test Administration Manual	AM-PWR	\$100.00
POWER Skill Summaries		
• Advanced – Independent Living for Corrections, Level 2A, Form 307 (set of 25)	PWR307	\$90.00
• Advanced – Independent Living, Level 2A, Form 306 (set of 25)	PWR306	\$90.00
• Workplace and Employability, Level 2A, Form 305 (set of 25)	PWR305	\$90.00
• Employment Preparation, Level 3A, Form 304 (set of 25)	PWR304	\$90.00
• Community Access, Level 3A, Form 303 (set of 25)	PWR303	\$90.00
• Basic Living, Level 4A, Form 302 (set of 25)	PWR302	\$90.00
• Basic Independent Living, Level 4A, Form 301 (set of 25)	PWR301	\$90.00
• POWER Curriculum Training Modules	PWRCUR	\$110.00
Answer Sheets		
• TOPSPRO Student Test Record (set of 100)	TRUS019	\$75.00
• Consumer Profile Record (set of 100)	COUS019	\$75.00

Adult Life Skills Series

Booklets

Target Population	Adults who have intellectual disabilities	
Timing	90 minutes	
Uses	Progress testing for reading skills	
Format	One-on-one testing. Responses in individuals' preferred mode of communication	
Difficulty Level	Pre-beginning literacy (Levels 2A to 5A)	
Training Requirement	http://training.casas.org/	
Test Administration Manual for Adult Life Skills Series (with answer keys, scoring information, test administration directions). Order at least one manual per agency site.		
Appraisal Test Form 352 (set of 1 each)		
Pre- and Post-Tests	Level 2A	Form 312 (set of 1 each)
		Form 313 (set of 1 each)
	Level 3A	Form 322 (set of 1 each)
		Form 323 (set of 1 each)
	Level 4A	Form 332 (set of 1 each)
		Form 333 (set of 1 each)
	Level 5A	Form 342 (set of 1 each)
		Form 343 (set of 1 each)
TOPSPRO Student Test Record (set of 100)		

Code	Price
TAMSSP	\$30.00
SPA352	\$45.00
SP312	\$45.00
SP313	\$45.00
SP322	\$45.00
SP323	\$45.00
SP332	\$45.00
SP333	\$45.00
SP342	\$45.00
SP343	\$45.00
TRUS019	\$75.00

CASAS offers a wide variety of assessments approved for Measuring Student Gains in the National Reporting System (NRS) for your ESL and ABE/ASE programs.

<https://tinyurl.com/2pnvkwxj>

ABE/ASE Learners

Modality	Test Series	Forms	NRS Approval Through June 30, 2026	NRS Approval Through June 30, 2031	NRS Approval Through June 30, 2032
Reading	Reading GOALS 2	921R–930R			✓
	Reading GOALS	901R–908R	✓		
Math	Math GOALS 2	921M–930M		✓	

English Language Learners

Modality	Test Series	Forms	NRS Approval Through June 30, 2025	NRS Approval Through June 30, 2031
Reading	Reading STEPS	621R–630R		✓
	Beginning Literacy Reading	27R–28R	✓	
	Life and Work Reading	81R–188R	✓	
	Secondary Level Assessment for Language Arts	513R–514R	✓	
	Citizenship	951R, 951RX–952RX	✓	
Listening	Listening STEPS	621L–630L		✓
	Life and Work Listening	981L–986L	✓	

Skill Level Descriptors

Skill Level Descriptors provide a common scale for interpreting test results. The scale has been verified more than four million adults and youth. Descriptors display the relationship of CASAS test scores to NRS Educational Functioning Levels. Skill areas include reading, math, listening, speaking, and writing.

Scale Scores NRS Educational Functioning Levels and Grade Levels

The Workforce Innovation and Opportunity Act (WIOA) requires states to report performance outcomes to monitor program performance. For states to meet these requirements, local programs use CASAS standardized assessments to collect and report data on learning gains.

A	Page	M	Page
Answer Sheets	17-18	Math Tests	10
Appraisals	4	Math GOALS 2	10
Reading STEPS	8	N	
Listening STEPS	9	National External Diploma Program® (NEDP)	19
Math GOALS 2	10	National Reporting System (NRS)	27
Reading GOALS	12	P	
Reading GOALS 2	11	POWER	26
Life and Work Reading	13	R	
Life and Work Listening	14	Reading Tests	
BOP Placement Test	23	Reading STEPS	8
B		Reading GOALS	12
Basic Skills Assessment		Reading GOALS 2	11
Reading STEPS	8	Beginning Literacy	13
Math GOALS 2	10	Life and Work Reading	13
Reading GOALS	11	Reading for Citizenship	14
Beginning Literacy	13	Spanish Reading Comprehension	15
Life and Work	13-14	Braille Reading Assessment	24
Braille Reading Assessment	24	S	
BOP	23	Spanish Reading Comprehension	16
C		Speaking Tests	
CASAS eTests Online	6	Citizenship Interview Test	16
CASAS eWORKs	20	Workplace Speaking	21
Citizenship	15-16	Special Needs	26
Correctional Education	23	T	
E		Training Workshops	5
Essay Test	22	TOPSpro Enterprise Software	7
F		V	
Federal Bureau of Prisons (BOP)	23	Visual Impairment	24-25
I		W	
Intellectual Disabilities	26	Workplace Speaking	21
L		Writing Assessment	22
Life and Work Reading	13		
Listening Tests			
Listening STEPS	9		
Life and Work Listening	14		
Large-print Resources	25		