

CASAS[®]

2024

Assessments / Resources / Training and Support



A Comprehensive Approach for Education, Workforce Development, and Business and Industry.

www.casas.org/order

Welcome to our CASAS Catalog!

Use online ordering for faster service.



Order online *(faster!)*

Visit: www.casas.org/order or
www.casas.org/product-overviews/search-by-test-series



Order via email

Visit: www.casas.org/order

1. Download the [order form](#) to your desktop
2. Fill out and email to orders@casas.org and
3. Call 800-255-1036, option 3 with your credit card number



Email us

General questions info@casas.org

Training Workshops training@casas.org

California Accountability capm@casas.org

Shipping and payment orders@casas.org

Technical and software techsupport@casas.org



Call us

800-255-1036

858-292-2900



Fax

858-292-2910 (FAX)

CASAS is a nonprofit organization. Purchase of CASAS materials supports ongoing technical assistance, continued research and development, test validity and reliability analyses, and additional support services provided by CASAS staff and CASAS certified trainers.

Contents	3
Placement Testing	4
Progress Testing	5
Training Requirements	5
Online Testing CASAS eTests	6
TOPSpro Enterprise	7
Reading STEPS Series	8
Listening STEPS Series	9
Math GOALS 2 Series	10
Reading GOALS Series	11
Math GOALS Series	12
Life and Work Reading Series	13
Life and Work Listening 980 Series	14
Citizenship	15-16
Spanish Reading Comprehension	16
Answer Sheets	17-18
National External Diploma Program® (NEDP)	19
Secondary Level Assessment Series	20
Workforce	21-22
Writing Assessments	23
Correctional Education	24
Accommodations Materials for Visual Impairment/Blindness	25-26
Large-Print Test Booklets and Answer Sheets	26
Special Needs	27
CASAS Assessments Approved for NRS	28
Index	29

Be sure you always choose placement tests and progress tests from the same series.

Here are the test series that offer pretests and post-tests to monitor learning progress.

Check the specific pages next to each test series for more details, *including National Reporting System (NRS) approval status.*

Keep in Mind!

The STEPS series is for ESL.

The GOALS series is for ABE/ASE.

Placement Testing (Appraisals and Locators*)

ESL Appraisals

Reading STEPS ([page 8](#)) *Newest!*

Listening STEPS ([page 9](#)) *Newest!*

Life and Work Reading ([page 13](#))

Life and Work Listening ([page 14](#))

ABE/ASE Appraisals

Math GOALS 2 ([page 10](#)) *Newest!*

Reading GOALS ([page 11](#))

Math GOALS ([page 12](#))

Remember!

Placement tests can never be used to monitor progress. Only progress tests (pre- and post-tests) can do that.

**Locators are available only for online testing with CASAS eTests.*

Assess. Learn. **Achieve.**

CASAS is the premier student assessment and data management system for adult education.

Questions? info@casas.org

Progress Testing (Pretests and Post-Tests)



ESL Progress Tests

- Reading STEPS ([page 8](#)) *Newest!*
- Listening STEPS ([page 9](#)) *Newest!*
- Life and Work Reading ([page 13](#))
- Life and Work Listening ([page 14](#))
- Beginning Literacy Reading ([page 13](#))
- Reading for Citizenship ([page 15](#))
- Spanish Reading Comprehension ([page 16](#))

ABE/ASE Progress Tests

- Math GOALS 2 ([page 10](#)) *Newest!*
- Reading GOALS ([page 11](#))
- Math GOALS ([page 12](#))
- Secondary Level Assessment ([page 20](#))

Special Needs

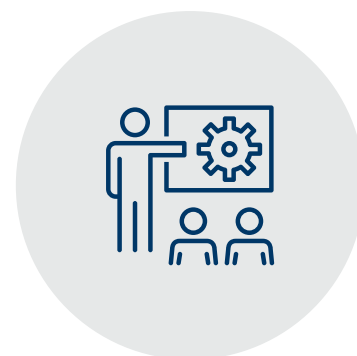
- Supplemental Materials for Visual Impairment/Blindness ([page 25](#))
- Braille Reading Assessment ([page 26](#))
- POWER Testing ([page 27](#))

Training Requirements

Training Workshops

Agencies must complete CASAS training to meet the requirements to order and implement most tests.

Visit training.casas.org for more information about our complimentary online training workshops.





Most CASAS assessments are available for online testing with CASAS eTests.

Learn more about CASAS eTests by visiting: ['Going Live' Checklist](#).

Order CASAS eTests and get TOPSpro Enterprise software at no extra charge!

<https://tinyurl.com/order-eTests>

Locators and Appraisals

Progress Tests

- Reading STEPS *Newest!*
- Listening STEPS *Newest!*
- Math GOALS 2 *Newest!*
- Reading GOALS
- Math GOALS
- Life Skills Math
- Life and Work Reading and Listening
- Reading for Citizenship
- Government and History for Citizenship
- Secondary Level Assessment
- Workforce Skills Certification System
- Essay Test
- Spanish Reading Comprehension

“

Our center converted to computer-based CASAS assessments. We serve 1200+ students a year, and many are non-English-speaking and older adults. At the computer, they are terrified. Staff help them until they are comfortable completing the assessment. I have seen adults finish the assessment elated and proud to finally be using a computer — and they haven't started classes yet!

~ Sandy Jensen, Manager Hawkeye CC Metro Center

”

www.casas.org/product-overviews/software/casas-etests



Ordering Information

Test units do not expire and are not specific to any tests.

Please note that a \$15 processing fee is added to all CASAS eTests orders.

Minimum order of 100 WTUs or TEUs.

CASAS cannot accept returns on WTUs or TEUs.

<http://tinyurl.com/order-TOPSpro>

<https://tinyurl.com/order-eTests>



TE Basic Package

Supports student-level implementation

Basic Web-test Units (WTUs)

Quantity	Code	Price each
100 - 500	WTU-0001	\$3.50
501-1000		\$2.40
1001-5000		\$2.20
5001+		\$1.95



TE Enhanced Package

Supports student, class, program, and accountability-level implementation

Enhanced TOPSpro Enterprise Units (TEUs)

Quantity	Code	Price each
100 - 500	TEU-0001	\$3.80
501-1000		\$3.10
1001-5000		\$2.85
5001+		\$2.60

Order Reading STEPS online tinyurl.com/order-Reading-STEPS

Reading STEPS tests measure reading comprehension skills of adults by assessing a subset of what ESL programs teach. The series is aligned with the National Reporting System (NRS) Educational Functioning Levels (EFLs) and to the English Language Proficiency Standards for Adult Education (2017).

The series uses a balance of life skills and employment-related content of interest to adults.

Target Population	English As a Second Language
Timing	Locator 620R: 15 minutes; Appraisal 619R: 30 minutes Level A: 30 mins; Level B: 50 mins; Levels C-E: 75 mins.
Uses	Progress testing in reading comprehension of daily life and workplace conversations and situations
Placement Tests	Locator Form 620R (online only) or Appraisal Form 619R
Training Requirement	Module 1 and Module 2 or 3 http://training.casas.org/
NRS Approval	Yes: English Language Learners

	Code	Price
Step 1: Screening, Placement, Determining Program Eligibility		
• Reading STEPS Test Administration Manual (with TAM for Reading STEPS Form 619R, answer keys, scoring information, test administration directions). Order at least one manual per agency site.	TAMSSTEPSR	\$55.00
• Appraisal Test Booklets Form 619R (set of 10)	STEPSARS10	\$55.00
• Appraisal Test Booklets Form 619R (set of 25)	STEPS619RA	\$125.00
Step 2: Documenting Progress/Accountability		
• Forms 621R-630R (set of 5 each)	STEPSRS05	\$287.50
• Forms 621R-630R (set of 10 each)	STEPSRS10	\$550.00
Reading (set of 25 color test booklets)		
• Level A, Form 621R	STEPS621R	\$125.00
• Level A, Form 622R	STEPS622R	\$125.00
• Level B, Form 623R	STEPS623R	\$125.00
• Level B, Form 624R	STEPS624R	\$125.00
• Level C, Form 625R	STEPS625R	\$125.00
• Level C, Form 626R	STEPS626R	\$125.00
• Level D, Form 627R	STEPS627R	\$125.00
• Level D, Form 628R	STEPS628R	\$125.00
• Level E, Form 629R	STEPS629R	\$125.00
• Level E, Form 630R	STEPS630R	\$125.00
Step 3: Scoring – Answer Sheets		
• TOPSpro Student Test Record (set of 100)	TRUS-019	\$75.00
• General Purpose Answer Sheets (set of 100)	ANS-001	\$75.00

Large Print Options (18 pt. font) available, see online ordering.

Order Listening STEPS online tinyurl.com/order-Listening-STEPS

Listening STEPS tests measure listening comprehension skills of adults by assessing a subset of what ESL programs teach. The series is aligned with the National Reporting System (NRS) Educational Functioning Levels (EFLs) and to the English Language Proficiency Standards for Adult Education (2017).

The series uses a balance of life skills and employment-related content of interest to adults.

Target Population	English as a Second Language
Timing	Locator 620L: 15 minutes; Appraisal 619L: 30 minutes Level A: 28 mins; Level B: 45 mins; Level C: 52 mins; Level D: 56 mins; Level E: 38 mins.
Uses	Progress testing in reading comprehension of daily life and workplace conversations and situations
Placement Tests	Locator Form 620L (online only) or Appraisal Form 619L
Training Requirement	Module 1 and Module 2 or 3 http://training.casas.org/
NRS Approval	Yes: English Language Learners

	Code	Price
Step 1: Screening, Placement, Determining Program Eligibility		
• Listening STEPS Test Administration Manual (with TAM for Reading STEPS Form 619L actions). Order at least one manual per agency site.	TAMSSTEPSL	\$55.00
• Listening STEPS Appraisal Test CD Form 619L (one CD)	STEPS619LA	\$55.00
Step 2: Documenting Progress/Accountability		
• Forms 621L-630L (25 color test booklets for Level A; one CD each form)	STEPSTPL	\$660.00
• Level A, Form 621L (25 color test booklets; one CD)	STEPS621LB	\$110.00
• Level A, Form 622L (25 color test booklets; one CD)	STEPS622LB	\$110.00
Listening (one CD; no booklet)		
• Level A, Form 621L	STEPS621L	\$55.00
• Level A, Form 622L	STEPS622L	\$55.00
• Level B, Form 623L	STEPS623L	\$55.00
• Level B, Form 624L	STEPS624L	\$55.00
• Level C, Form 625L	STEPS625L	\$55.00
• Level C, Form 626L	STEPS626L	\$55.00
• Level D, Form 627L	STEPS627L	\$55.00
• Level D, Form 628L	STEPS628L	\$55.00
• Level E, Form 629L	STEPS629L	\$55.00
• Level E, Form 630L	STEPS630L	\$55.00
Step 3: Scoring – Answer Sheets		
• TOPSpro Student Test Record (set of 100)	TRUS-019	\$75.00
• General Purpose Answer Sheets (set of 100)	ANS-001	\$75.00

Large Print Options (18 pt. font) available, see online ordering.

Order Math GOALS 2 online tinyurl.com/order-Math-GOALS-2

Math GOALS 2 measures academic and higher-order math skills. The series is aligned with the College and Career Readiness (CCR) Standards for Adult Education and the mathematics portion of the National Reporting System (NRS) Educational Functioning Levels (EFLs).

The series uses a balance of life skills and workplace-related math of practical use to adults.

- Target Population Adult Basic Education and Adult Secondary Education
- Timing Locator 920M: 15 minutes; Appraisal 919M: 30 minutes; Level A: 50 mins; Level B: 65 mins; Level C: 75 mins; Level D: 75 mins; Level E: 90 mins.
- Uses Progress testing in math comprehension of daily life and workplace conversations and situations.
- Placement Tests Locator Form 920M (online only) or Appraisal Form 919M
- Training Requirement Module **1** and Module **2** or **3** <http://training.casas.org/>
- NRS Approval Yes: **Adult Basic Education and Adult Secondary Education**

	Code	Price
Step 1: Screening, Placement, Determining Program Eligibility		
• Math GOALS 2 Test Administration Manual (with TAM for Math GOALS 2 Appraisal Form 919M, answer keys, scoring information, test administration directions). Order at least one manual per agency site.	TAMSGOALS2M	\$55.00
• Appraisal Test Booklets Form 919M (set of 10)	GOALS2AMS10	\$55.00
• Appraisal Test Booklets Form 919M (set of 25)	GOALS2919MA	\$125.00
Step 2: Documenting Progress/Accountability		
• Forms 921M-930M (set of 5 each)	GOALS2MS05	\$287.50
• Forms 921M-930RM (set of 10 each)	GOALS2MS10	\$550.00
Math (set of 25 color test booklets)		
• Level A, Form 921M	GOALS2921M	\$125.00
• Level A, Form 922M	GOALS2922M	\$125.00
• Level B, Form 923M	GOALS2923M	\$125.00
• Level B, Form 924M	GOALS2924M	\$125.00
• Level C, Form 925M	GOALS2925M	\$125.00
• Level C, Form 926M	GOALS2926M	\$125.00
• Level D, Form 927M	GOALS2927M	\$125.00
• Level D, Form 928M	GOALS2928M	\$125.00
• Level E, Form 929M	GOALS2929M	\$125.00
• Level E, Form 930M	GOALS2930M	\$125.00
Step 3: Scoring – Answer Sheets		
• TOPSpro Student Test Record (set of 100)	TRUS-019	\$75.00
• General Purpose Answer Sheets (set of 100)	ANS-001	\$75.00

Large Print Options (18 pt. font) available, see online ordering.

Order Reading GOALS online <https://tinyurl.com/29wdfu57>

Reading GOALS measures academic language and higher-order reading skills contained in the National Reporting System (NRS) Educational Functioning Levels (EFLs).

The series uses a balance of life skills and employment-related content of interest to adults.

Target Population Adult Basic Education and Adult Secondary Education.

Timing Form 900R Reading GOALS Appraisal – 30 minutes
Level A – 60 minutes. Levels B, C, D – 75 minutes

Uses Progress testing (pre- and post-test)

Placement Tests Locator (online only) or Form 900R Reading GOALS Appraisal

Training Requirement Module **1** and Module **2** or **3** <http://training.casas.org/>

NRS Approval Yes: **Adult Basic Education and Adult Secondary Education**

	Code	Price
Step 1: Screening, Placement, Determining Program Eligibility		
Reading GOALS Test Administration Manual (with TAM for Reading GOALS Appraisal Form 900R, answer keys, scoring information, test administration directions). Order at least one manual per agency site.	TAMS-GOALSR	\$45.00
Appraisal Test Booklets Form 900R (set of 10)	GOALSAR-S10	\$55.00
Appraisal Test Booklets Form 900R (set of 25)	GOALS-900R	\$110.00
Step 2: Documenting Progress/Accountability		
• Forms 901R-908R (set of 5 each)	GOALSR-S05	\$210.00
• Forms 901R-908R (set of 10 each)	GOALSR-S10	\$375.00
Reading (set of 25 color test booklets)		
• Level A, Form 901R	GOALS-901R	\$110.00
• Level A, Form 902R	GOALS-902R	\$110.00
• Level B, Form 903R	GOALS-903R	\$110.00
• Level B, Form 904R	GOALS-904R	\$110.00
• Level C, Form 905R	GOALS-905R	\$110.00
• Level C, Form 906R	GOALS-906R	\$110.00
• Level D, Form 907R	GOALS-907R	\$110.00
• Level D, Form 908R	GOALS-908R	\$110.00
Step 3: Scoring – Answer Sheets		
• Self-Scoring GOALS Appraisal Form 900R (set of 25)	ANS-900	\$55.00
• TOPSpro Student Test Record (set of 100)	TRUS-019	\$75.00
• General Purpose Answer Sheets (set of 100)	ANS-001	\$75.00



CASAS offers test materials for individuals with visual impairment/blindness. [See p. 25](#)

Order Math GOALS online <https://tinyurl.com/4s25ysf9>

Math GOALS measures academic and higher-order math skills contained in the National Reporting System (NRS) Educational Functioning Levels (EFLs).

The series uses a balance of life skills and workplace-related content of practical use to adults.

Target Population Adult Basic Education and Adult Secondary Education

Timing Form 900M Math GOALS Appraisal – 30 minutes
Level A/B – 60 minutes. Level C/D – 75 minutes

Uses Progress testing (pre- and post-test)

Placement Tests Locator (online only) or Form 900M Math GOALS Appraisal

Training Requirement Module **1** and Module **2** or **3** <http://training.casas.org/>

NRS Approval Yes, through June 30, 2024. **Adult Basic Education and Adult Secondary Education**

Code	Price
------	-------

Step 1: Screening, Placement, Determining Program Eligibility

Math GOALS Test Administration Manual (with TAM for Math GOALS Appraisal Form 900M answer keys, scoring information, test administration directions). Order at least one manual per agency site.	TAMS-GOALSM	\$45.00
Appraisal Test Booklets Form 900M (set of 10)	GOALSAM-S10	\$55.00
Appraisal Test Booklets Form 900M (set of 25)	GOALS-900M	\$110.00

Step 2: Documenting Progress/Accountability

• Forms 913M-914M, 917M-918M (set of 5 each)	GOALSM-S05	\$105.00
• Forms 913M-914M, 917M-918M (set of 10 each)	GOALSM-S10	\$187.00
Math (set of 25 color test booklets)		
• Level A/B, Form 913M	GOALS-913M	\$110.00
• Level A/B, Form 914M	GOALS-914M	\$110.00
• Level C/D, Form 917M	GOALS-917M	\$110.00
• Level C/D, Form 918M	GOALS-918M	\$110.00

Step 3: Scoring – Answer Sheets

• Self-Scoring GOALS Appraisal Form 900M (set of 25)	ANS-900	\$55.00
• TOPSpro Student Test Record (set of 100)	TRUS-019	\$75.00
• General Purpose Answer Sheets (set of 100)	ANS-001	\$75.00



CASAS offers test materials for individuals with visual impairment/blindness. [See p. 25](#)

Order Life and Work Reading online <https://tinyurl.com/vrx94zfw>

- Target Population English As a Second Language
- Timing 60 minutes
- Uses Progress testing in everyday life and workplace reading skills
- Placement Test Locator (online only) or Form 80 Appraisal
- Training Requirement Module **1** and Module **2** or **3** <http://training.casas.org/>
- NRS Approval Yes, through June 30, 2025. **English Language Learners**

Code	Price
------	-------

Step 1: Screening, Placement, Determining Program Eligibility

Test Administration Manual for Life and Work Reading (with answer keys, scoring information, test administration directions). Order at least one manual per agency site.	TAMS-LW	\$30.00
Form 80 Test Administration Manual for Reading and Listening	LRML-MAN	\$95.00
Form 80 Appraisal Test Booklet (set of 25)	LWR-080	\$95.00

Step 2: Documenting Progress/Accountability

Beginning Literacy Reading

(set of 25, consumable; scoring packet included at no charge)

• Form 27	BLRA-027	\$70.00
• Form 28	BLRA-028	\$70.00

Life and Work Reading (set of 25)

• Level A, Form 81	LWR-081	\$95.00
• Level A, Form 81X	LWRX-081	\$95.00
• Level A, Form 82	LWR-082	\$95.00
• Level A, Form 82X	LWRX-082	\$95.00
• Level B, Form 83	LWR-083	\$95.00
• Level B, Form 84	LWR-084	\$95.00
• Level C, Form 185	LWR-185	\$95.00
• Level C, Form 186	LWR-186	\$95.00
• Level D, Form 187	LWR-187	\$95.00
• Level D, Form 188	LWR-188	\$95.00
• Forms 81-188 (set of 5 each)	LWR-S05	\$215.00
• Forms 81-188 (set of 10 each)	LWR-S10	\$400.00
• Level C, Form 85 (workplace-focused)	LWR-085	\$95.00
• Level C, Form 86 (workplace-focused)	LWR-086	\$95.00

Step 3: Scoring – Answer Sheets

• Self-Scoring Answer Sheet Appraisal Form 80 (set of 25)	ANS-080	\$55.00
• TOPSpro Student Test Record (set of 100)	TRUS-019	\$75.00
• General Purpose Answer Sheets (set of 100)	ANS-001	\$75.00



CASAS offers test materials for individuals with visual impairment/blindness. [See p. 25](#)

Order Life and Work Listening online <https://tinyurl.com/mu5srheu>

- Target Population English As a Second Language
- Timing 60 minutes
- Uses Progress testing in listening comprehension of daily life and workplace conversations and situations
- Difficulty Level Three levels from beginning ESL literacy (Level A) to advanced ESL (Level C)
- Placement Tests Locator (online only) or Form 80 Appraisal
- Training Requirement Module **1** and Module **2** or **3** <http://training.casas.org/>
- NRS Approval Yes, through June 30, 2025. **English Language Learners**

	Code	Price
Step 1: Screening, Placement, Determining Program Eligibility		
Test Administration Manual for Life and Work Listening 980 Series (with answer keys, scoring information, test administration directions). Order at least one manual per agency site.	TAM9-LWL	\$30.00
Step 2: Documenting Progress/Accountability		
Testing Package with Appraisal (includes these items) <ul style="list-style-type: none"> • Form 80 Appraisal Test Administration Manual • Form 80 Appraisal Listening Test CD (one) • Form 80 Appraisal Reading Test Booklets (set of 25) • Level A, Forms 981 and 982 (one CD each form; 25 color test booklets each form) • Level B, Forms 983 and 984 (one CD each form; no booklets) • Level C, Forms 985 and 986 (one CD each form; no booklets) 	LWL9-PAC	\$535.00
Testing Package (without Appraisal) (includes these items) <ul style="list-style-type: none"> • Level A, Forms 981 and 982 (one CD each form; 25 color test booklets each form) • Level B, Forms 983 and 984 (one CD each form; no booklets) • Level C, Forms 985 and 986 (one CD each form; no booklets) 	LWL9-S25	\$395.00
Additional Level A Set <ul style="list-style-type: none"> • Level A, Form 981 (one CD each; 25 color test booklets) • Level A, Form 982 (one CD each; 25 color test booklets) 	CLWL-981	\$110.00
	CLWL-982	\$110.00
	LWL9-981	\$50.00
	LWL9-982	\$50.00
Additional CDs (one CD per test) <ul style="list-style-type: none"> • Level A, Form 981 • Level A, Form 982 • Level B, Form 983 • Level B, Form 984 • Level C, Form 985 • Level C, Form 986 	CDL-981	\$55.00
	CDL-982	\$55.00
	CDL-983	\$55.00
	CDL-984	\$55.00
	CDL-985	\$55.00
	CDL-986	\$55.00
Step 3: Scoring – Answer Sheets		
• Self-Scoring Answer Sheet Appraisal Form 80 (set of 25)	ANS-080	\$55.00
• TOPSPro Student Test Record (set of 100)	TRUS-019	\$75.00
• General Purpose Answer Sheets (set of 100)	ANS-001	\$75.00

Ensure that your students are well prepared for the naturalization process and USCIS (United States Citizenship and Immigration Services) interview.

Citizenship assessments from CASAS help you meet that goal!



Reading for Citizenship

Order Reading for Citizenship online <https://tinyurl.com/yr42ut3z>

Timing 60 minutes

Uses Progress testing in a citizenship-related context

Difficulty Level Beginning literacy (Level A) and high beginning literacy (Level AX)

Training Requirement Module **1** and Module **2** or **3** <http://training.casas.org/>

NRS Approval Yes, through June 30, 2025. **English Language Learners**

	Code	Price
Reading for Citizenship Test Administration Directions (with answer keys, scoring information, test administration directions)	----	Included at no charge
Reading for Citizenship Level A, Form 951R (set of 25)	CIR-951	\$95.00
Reading for Citizenship Level A, Form 952R (set of 25)	CIR-952	\$95.00
Reading for Citizenship Level AX, Form 951RX (set of 25)	CIRX-951	\$95.00
Reading for Citizenship Level AX, Form 952RX (set of 25)	CIRX-952	\$95.00

Government and History for Citizenship

Order Government and History for Citizenship online <https://tinyurl.com/2s42fw84>

Timing 25 minutes (Test Administration Manual and CD required to administer the test)

Uses Progress testing of American government and history knowledge

Difficulty Level Intermediate English As a Second Language

	Code	Price
Government and History Test Administration Manual with two CDs	CIGH-TAM	\$95.00
Government and History Test Booklets Form 965 (set of 25)	CIGH-965	\$95.00
Government and History Test Booklets Form 966 (set of 25)	CIGH-966	\$95.00
Additional CD (optional) Form 965	CD-965	\$55.00
Additional CD (optional) Form 966	CD-966	\$55.00
Answer Sheets TOPSpro Student Test Record (set of 100)	TRUS-019	\$75.00
General Purpose Answer Sheets (set of 100)	ANS-001	\$75.00



Citizenship Interview Test

Order Citizenship Interview Test online <https://tinyurl.com/ycxp4tpa>

Timing 15-30 minutes

Uses One-on-one oral interview simulating the USCIS interview

Difficulty Level High beginning to advanced English As a Second Language

Training Requirement Certification <http://training.casas.org/>

	Code	Price
CIT Certification Training (Open July 1 to April 30)	CIT-CTO	\$150.00
Citizenship Interview Test Form 973 (set of 25; consumable)	CIT-973	\$60.00
Citizenship Interview Test Form 974 (set of 25; consumable)	CIT-974	\$60.00
Annual Recertification for CIT (Open January to April 30)	ARC-CIT	\$75.00

Spanish Reading Comprehension



Evaluación De Comprensión De La Lectura

Evaluación De Comprensión De La Lectura online <https://tinyurl.com/39v3t267>

Target Population Native Spanish speakers or anyone learning Spanish

Timing Not a timed test. 50 to 60 minutes recommended.

Uses Readiness for Spanish High School Equivalency exam or program, Spanish vocational training, or progress testing in a Spanish language class

Difficulty Level From 3 to 9 years of schooling in most Spanish-speaking nations

	Code	Price
Test Administration Directions for Spanish Reading Comprehension (with answer keys, scoring information, administration directions) Order at least one copy per agency site.	SLT-TAD	\$20.00
Spanish Reading Comprehension Test Booklets for Form 653 (set of 25)	SLT-653	\$75.00
Spanish Reading Comprehension Test Booklets for Form 654 (set of 25)	SLT-654	\$75.00
Answer Sheets (self-scoring)		
• Form 653 (set of 25)	ANS-653	\$49.00
• Form 654 (set of 25)	ANS-654	\$49.00

Test items reflect authentic reading materials.

SE RENTA APARTAMENTO GRANDE

De 2 Recamaras y 2 Baños
Cocina Nueva
Sala Espaciosa
Ubicado En El Centro
Cerca Del Transporte Público
\$1,100 Al Mes
Llame al 555-1399



5. ¿Cuál habitación fue remodelada recientemente?

A. El baño
B. La cocina
C. La recamara
D. La sala



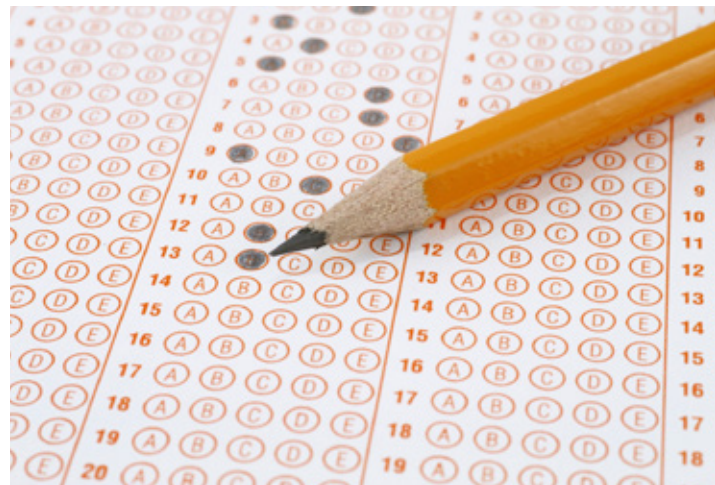
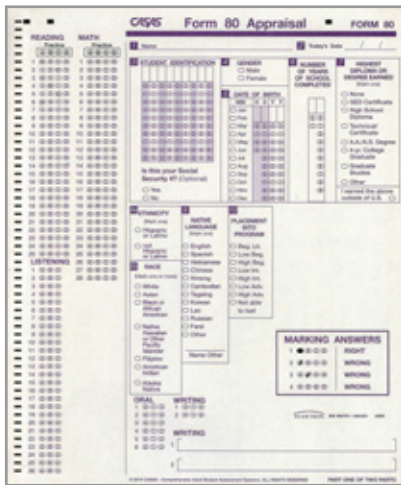
Appraisal Answer Sheets

Not for use with TOPSpro Enterprise software
Not for scanning

Order Answer Sheets online <https://tinyurl.com/2p96suup>

Two-part self-scoring answer sheets with bottom carbon sheet that contains answer keys and score conversion charts (set of 25)

	Code	Price
Form 900 Reading and Math Appraisal Answer Sheets (set of 25)	ANS-900	\$55.00
Form 80 Appraisal Answer Sheets (set of 25)	ANS-080	\$55.00



General Purpose Answer Sheets

Not for use with TOPSpro Enterprise software

General Purpose Answer Sheets for appraisals, pre- and post-tests, and certification tests.

Option #1 – For those who manually correct tests, need to administer up to four tests per answer sheet, or need to collect demographic information on each answer sheet. **Not for scanning** (set of 100)

Option #2 – For those who manually correct tests, scan test information using Scantron 888 series stand-alone scanners ONLY, administer only two tests, or need to collect demographic information on each answer sheet (set of 100)

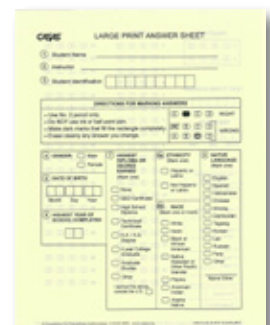
Code	Price
ANS-001	\$75.00
ANS-002	\$75.00

Large-Print Test Booklets and Answer Sheets

Test booklets available in large print at \$50 per booklet. Indicate test form number and write “large print” on order form.

General Purpose Answer Sheets for all CASAS tests (tablet of 100)

Code	Price
----	\$50.00 each
ANSL-001	\$40.00



TOPSpro Enterprise Answer Sheets

Order Answer Sheets online <https://tinyurl.com/2p96suup>

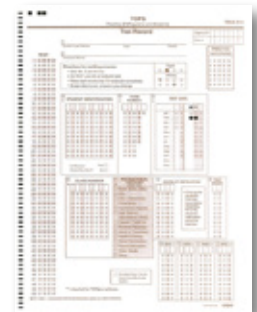
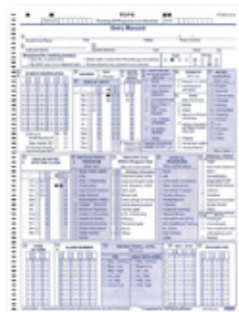
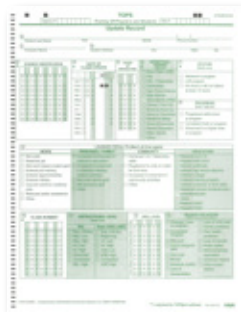
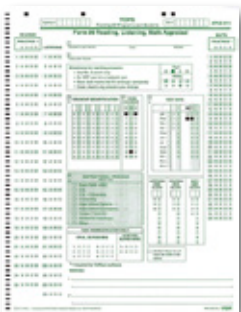
TOPSpro Enterprise answer sheets gather demographic, testing, program, and accountability information. They simplify data collection for many federal reporting requirements.

See pages 6-7 for software capability and reporting functions of TOPSpro Enterprise and CASAS eTests.

	Code	Price
TOPSpro Enterprise Student Test Record (brown) <ul style="list-style-type: none"> • Use with any CASAS pre- or post-test 	TRUS-019	\$75.00
Entry/Update Record (blue/green) <ul style="list-style-type: none"> • Two-sided form for entry and update data • Entry – Student demographics, instructional program and level data, reason for enrollment • Update – Student progress and results after instructional intervention 	EUUS-019	\$75.00
Form 80/130 Appraisal Test Record (green/purple) <ul style="list-style-type: none"> • Side One – For Form 80 Appraisal • Side Two – For ECS Form 130 Appraisal 	APUS-019	\$75.00
Supplemental Entry/Update Record-Workforce (gray/red) <ul style="list-style-type: none"> • Supplements Entry/Update Record by collecting workforce and employment-related data • Includes pre-employment, work maturity skills achieved, support services needs, assessment, wages, and income 	WSUS-019	\$75.00
Entry/Test Record (blue/brown) <ul style="list-style-type: none"> • Combines the Entry Record on one side and Test Record on the other 	ETUS-019	\$75.00
Update/Test Record (brown/green) <ul style="list-style-type: none"> • Combines the Update Record on one side and Test Record on the other 	UTUS-019	\$75.00
Consumer Profile Record (gray/green) <ul style="list-style-type: none"> • For programs implementing POWER assessment and TOPSpro Enterprise • Provides Entry and Demographic record and POWER observation information 	COUS-019	\$75.00

For information about scanners and TOPSpro Enterprise visit:

<http://tinyurl.com/TE-requirements>



Offer an Outstanding High School Diploma Program and Begin Changing Lives!



Actual NEDP graduate



a program of **CASAS**

The NEDP is a unique pathway to a high school diploma.

- Competency-based, applied performance
- Focuses on life and work skills
- Encourages learner active engagement and critical thinking
- Offered remotely or face-to-face
- Aligned to College and Career Readiness
- Provides an emphasis on digital literacy

WEU - Diagnostics

WEU - Generalized Assessment

Code	Price
WEU-D	\$60.00
WEU-GA	\$60.00

Visit www.nedp.org

We are here to answer your questions.

Call 1-800-255-1036 ext. 135.

2,435 NEDP graduates completed an extensive follow-up survey. The survey revealed that nearly 85% of NEDP graduates have met one or more goals:

- employed
- attending college
- in a training program

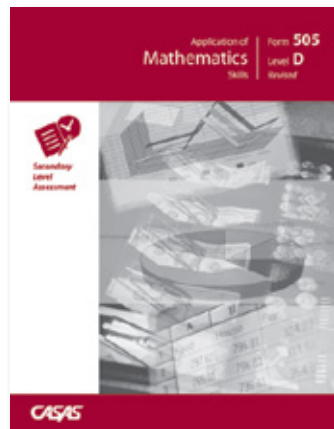


Share your NEDP stories at www.facebook.com/NationalExternalDiplomaProgram
Use #NEDP, #AdultEdu and #NEDPChangingLives to connect.

Order Secondary Level Assessment online <https://tinyurl.com/ytr2vtj5>

- Target Population Adult Secondary Education, High School Equivalency, and transition to postsecondary
- Timing 60 minutes
- Uses Progress testing in seven high school academic subjects
- Difficulty Level Adult secondary (Level D)
- Placement Tests Locator or Form 80 Appraisal for placement
- Training Requirement Module **1** and Module **2** or **3** <http://training.casas.org/>
- NRS Approval Yes, through June 30, 2024. **English Language Learners, Forms 513-514 Language Arts**

	Code	Price
Step 1: Screening, Placement, Determining Program Eligibility		
Test Administration Manual for Secondary Level Assessment (with answer keys, scoring information, test administration directions) Order at least one manual per agency site.	TAMS-SLA	\$30.00
Form 80 Appraisal Test Booklet (set of 25)	LWR-080	\$95.00
Step 2: Documenting Progress/Accountability		
Mathematics (sets of 5 each)		
• Form 505	SDM-505	\$35.00
• Form 506	SDM-506	\$35.00
Reading for Language Arts (set of 5 each)		
• Form 513	SDL-513	\$35.00
• Form 514	SDL-514	\$35.00
Step 3: Scoring – Answer Sheets		
TOPSpro Student Test Record (set of 100)	TRUS-019	\$75.00
General Purpose Answer Sheets (set of 100)	ANS-001	\$75.00



Workforce Skills Certification System

Order WSCS online <https://tinyurl.com/mr3dy4bd>

WSCS assesses work-related and employer-validated academic skills with CASAS eTests and assesses soft skills (personal qualities, work habits, attitude) with the Learning Resources, Inc. (LRI) online module.

You can generate a work-readiness WSCS Profile and Certificate from TOPSpro Enterprise software to present at employment interviews. Adult education providers use the WSCS Profile to guide instruction and certify skills at any level.

Target Population Individuals seeking to enter or re-enter the workforce or entry-level workers

- Uses**
- Helps educators and workforce development professionals target instruction
 - Helps employers evaluate potential and incumbent workers
 - Informs employers of reading, math, critical thinking, problem solving, and soft-skills proficiency

- WSCS Certification Process**
1. Implement CASAS eTests
 2. Order one WSCS package per individual (minimum order of 10 packages)
 3. Schedule WSCS Implementation Training

- WSCS Certification Package Includes**
- Online assessment of reading, math, critical thinking, and problem solving
 - Online assessment of soft skills testing using LRI Customer Care and Personal Qualities Modules
 - WSCS Profile, WSCS Certificate, and student-level feedback reports for reading, math, and soft skills

Training Requirement WSCS Implementation Training
(available via webinar or at Summer Institute)

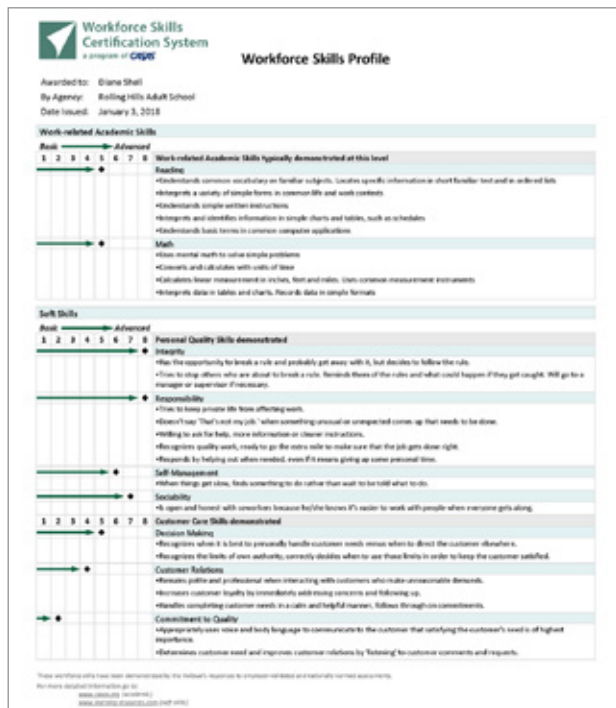
Workforce Skills Certification Package
(minimum order of 10 packages)

Code	Price
WSC-0001	\$35.00 each

We recommend that agencies have three to six months' experience providing online testing prior to implementing WSCS.



WSCS Profile



WSCS Certificate



Workplace Speaking



Order Workplace Speaking online <https://tinyurl.com/muwmas9f>

One-on-one oral assessment simulating common workplace conversations and vocabulary

- Target Population English As a Second Language
- Timing 15-20 minutes
- Uses Measure on-the-job speaking skills
- Classroom Use Results guide workforce curriculum development and lesson planning
- Difficulty Level High beginning to advanced ESL
- Training Requirement Workplace Speaking Manual includes training for consistent scoring through use of standardized rubrics and guidelines

Workplace Speaking Manual. Order at least one manual per agency site.

Workplace Speaking, Form 273 (set of 25; consumable)

Workplace Speaking, Form 274 (set of 25; consumable)

Code	Price
WS-MAN	\$125.00
WS-273	\$42.00
WS-274	\$42.00



Essay Test – www.tinyurl.com/CASAS-Essay 

Target Population	Programs offering Adult Basic Education, Adult Secondary Education, English as a Second Language, and Career Technical Education
Writing Skills Evaluated	Organization, word choice, development of ideas, grammar, and capitalization using an online word processor
Uses	Evaluate general writing strengths or measure progress in writing skills
Difficulty Level	Beginning to advanced writing skills
Training Requirement	Module 1 and Module 2 http://training.casas.org/ Automatic scoring with results available immediately to student and proctor. Available only in CASAS eTests (no paper testing)

Functional Writing Assessment 

Order Functional Writing Assessment online <https://tinyurl.com/4pznzkex>

Target Population	Adult Education programs offering writing instruction
Writing Skills Focus	Content, word choice, grammar and sentence structure, punctuation, spelling, and capitalization
Uses	Determine general writing level or measure progress in writing skills
Difficulty Level	Beginning to advanced writing skills
Training Requirement	Writing training, use of detailed writing rubric, and annotated scoring anchors (Contact CASAS for details)
Scoring Service	Agencies with a limited number of writing tests to score may purchase the CASAS scoring service. (Contact CASAS for details)

	Code	Price
Functional Writing Assessment Manual – Picture Tasks 460-466	FWAP-MAN	\$95.00
Life Skills Picture Task Prompts in Color (laminated, reusable, set of 25)		
• Form 460 (grocery store)	FWPC-460	\$85.00
• Form 461 (accident)	FWPC-461	\$85.00
• Form 462 (department store)	FWPC-462	\$85.00
• Form 463 (park)	FWPC-463	\$85.00
Workplace Picture Task Prompts in Color (laminated, reusable, set of 25)		
• Form 464 (restaurant)	FWPC-464	\$85.00
• Form 465 (warehouse)	FWPC-465	\$85.00
• Form 466 (hotel)	FWPC-466	\$85.00
Picture Task Prompts in Color (laminated, reusable), set of 35 (5 each of the above 7 prompts)	FWPC-S05	\$135.00
Picture Task Response and Scoring Sheet (pad of 100)	FWAP-TRS	\$25.00
Picture Task Starter Kit Color contains Forms 460-463 (set of 25 each), Picture Task Response and Scoring Sheet (pad of 100), and the Functional Writing Assessment Manual	FWPC-KIT	\$380.00
Scoring Service, First-time processing fee	SS-FPF	\$75.00
Scoring Service, Per examinee	SS-WAB	\$15.00

(Not for use by Bureau of Prisons. **BOP sites see below**)

- Target Population Inmates in state prisons, jails, and youth authority programs
- Uses Determine skill levels in reading, math, listening, writing, or high school level subject areas
- Testing Options Reading p.17, Math p.18, Listening p.20, Writing p. 29, Secondary Level Assessment p. 26
- Training Requirement Module **1** and Module **2** or **3** <http://training.casas.org/> Writing Assessment Training p. 23

Federal Bureau of Prisons

Order Federal Bureau of Prisons materials online <https://tinyurl.com/4tx4dyp9>

All BOP English As a Second Language programs must purchase at least one Starter Kit.

- Target Population Inmates in BOP English language and literacy programs
- Uses Identifying skills BOP inmates need to prepare for employment on release

Code	Price
BOP-KIT	\$940.00

Bureau of Prisons Starter Kit (contains these materials)

- BOP ESL **Placement** Test (includes a reading and a listening test)
25 test booklets and 100 answer sheets
- Life and Work **Reading** Pre- and Post-Tests
Forms 81, 83, 185 (25 test booklets for each test form)
Forms 82, 84, 186 (15 test booklets for each test form)
- Life and Work **Reading** Test Administration Manual
- Life and Work **Listening** Pre- and Post-Tests
Forms 81-86 (one CD each form; 25 picture-prompt test booklets for Forms 81 and 82)
Forms 83-86 (one CD each form; no booklets)
- Life and Work **Listening** Test Administration Manual
- Level C **Certification** Tests for Reading, Form 522 (25 test booklets)
- 100 General Purpose Answer Sheets to use with pre- and post-tests
- BOP Test Administration Manual



When You Need to Replenish Any Part of Your BOP Starter Kit

	Code	Price
BOP ESL Placement Test Booklets	• Form 1 (set of 25)	BOP-001 \$90.00
	• Form 2 (set of 25)	BOP-002 \$90.00
	• Form 3 (set of 25)	BOP-003 \$90.00
BOP ESL Placement Test CDs	• Form 1 (one CD)	CDBP-001 \$25.00
	• Form 2 (one CD)	CDBP-002 \$25.00
	• Form 3 (one CD)	CDBP-003 \$25.00
BOP ESL Placement Test Answer Sheets (set of 100)		AS-BOP \$75.00
Life and Work Reading and Life and Work Listening (see www.casas.org/product-overviews)		
• Level C Certification Tests for Reading, Form 522 (set of 25)	LSC-522	\$85.00
• Level C Certification Tests for Reading, Form 523 (set of 25)	LSC-523	\$85.00
• Level C Certification Tests for Reading, Form 524 (set of 25)	LSC-524	\$85.00
• General Purpose Answer Sheets (set of 100)	ANS-001	\$75.00
• BOP Test Administration Manual	BOP-MAN	\$85.00

Supplemental Materials for Test Takers with Visual Impairment/Blindness

Order VIB Materials online <https://tinyurl.com/mrj33vn7>

The Accommodations Materials for Visual Impairment/Blindness are supplements to the Test Administration Manual and test booklets for Reading GOALS, Math GOALS, and Life and Work Reading.

- Includes supplemental guidelines and materials for administering the three test series
- Provides tactile graphics/braille for a selected number of test items
- For use with paper-based and computer-based CASAS eTests
- All materials are reusable, including student Tactile Graphics/Braille test booklet
- For information go to <https://tinyurl.com/5n9xvy89>

Target Population Adults who have visual impairment/blindness

- Available Forms
- Reading GOALS Forms 900R-908R
 - Math GOALS Forms 900M-918M
 - Life and Work Reading Forms 83R, 84R, 185R, 186R
 - These materials also can be used to provide accommodations for test takers with other documented disabilities who require a human reader or use of a screen reader during assessments.

New Materials Available!

[Supplemental VIB materials for Reading STEPS, Listening STEPS, and Math GOALS 2](#)

	Code	Price
Reading GOALS Forms 900R–908R		
<ul style="list-style-type: none"> • Reading GOALS Test Administration Manual Supplement for Test Takers with Visual Impairment/Blindness* • 1 set of test forms for Reader/Scribe use – 1 copy each of 900R-908R • <i>There is not a tactile graphic/braille test booklet for Reading GOALS</i> 	GOALSR-VIB	\$75.00
Math GOALS Forms 900M–918M		
<ul style="list-style-type: none"> • Math GOALS Test Administration Manual Supplement for Test Takers with Visual Impairment/Blindness* • 1 set of test forms for Reader/Scribe use – 1 copy each of 900M, 913M, 914M, 917M and 918M • Math GOALS Tactile Graphics/Braille test booklet for Test Takers with Visual Impairment/Blindness 	GOALSM-VIB	\$125.00
Life and Work Reading Forms 83R, 84R, 185R, 186R		
<ul style="list-style-type: none"> • Life and Work Reading Test Administration Manual Supplement for Test Takers with Visual Impairment/Blindness* • 1 set of test forms for Reader/Scribe use – 1 copy each of 83R, 84R, 185R and 186R • Life and Work Reading Tactile Graphics/Braille test booklet for Test Takers with Visual Impairment/Blindness 	LWR-VIB	\$120.00

* This product is a supplement to the test series Test Administration Manual. To use the Test Administration Supplement for Test Takers with Visual Impairment/Blindness, you must have both manuals.

Braille Reading Assessment

The Braille Reading Assessment is a stand-alone assessment for low-level learners with visual impairment/blindness. It is a customized test used to determine Life and Work Reading skills. This test is not NRS-approved.

- Target Population Adults who have visual impairment/blindness
- Timing 120 minutes
- Format Contracted braille (not alphabet)
- Difficulty Level Braille reading format from beginning literacy (Level A) to beginning basic skills (Level B)

Braille Reading Assessment Test Package Form 837 includes:

- One Test Administration Packet
- One braille test booklet
- One regular-print test form for test administrators
- 5 General Purpose Answer Sheets

Additional General Purpose Answer Sheets (set of 5)

Code	Price
BRAI-837	\$60.00
ANS-837	\$10.00



Large-Print Test Booklets and Answer Sheets

Test booklets available in large-print (18 pt. font) at \$50 per booklet. Indicate test form number and write “large print” on order form.

General Purpose Answer Sheets (18 pt. font) for all CASAS tests (tablet of 100)

Code	Price
----	\$50.00 each
ANSL-001	\$40.00

Testing Accommodations

For information about testing accommodations visit:

www.casas.org/training-and-support/testing-guidelines/accommodations-guidelines

Order Assessments for Special Needs online <https://tinyurl.com/2ypudaud>

POWER – Providing Options for the Workplace, Education, and Rehabilitation 

Target Population Adults who have intellectual disabilities and do not read print

Timing 90 minutes

Uses Measures pre-reading skills and reports performance levels using scale scores. POWER curriculum modules are linked to POWER assessment

Classroom Use Excellent resource for teaching strategies and lesson planning

Training Requirement Modules **1** and **3** <http://training.casas.org/>

	Code	Price
POWER Test Administration Manual	AM-PWR	\$100.00
POWER Skill Summaries		
• Advanced – Independent Living for Corrections, Level 2A, Form 307 (set of 25)	PWR-307	\$90.00
• Advanced – Independent Living, Level 2A, Form 306 (set of 25)	PWR-306	\$90.00
• Workplace and Employability, Level 2A, Form 305 (set of 25)	PWR-305	\$90.00
• Employment Preparation, Level 3A, Form 304 (set of 25)	PWR-304	\$90.00
• Community Access, Level 3A, Form 303 (set of 25)	PWR-303	\$90.00
• Basic Living, Level 4A, Form 302 (set of 25)	PWR-302	\$90.00
• Basic Independent Living, Level 4A, Form 301 (set of 25)	PWR-301	\$90.00
• POWER Curriculum Training Modules	PWR-CUR	\$110.00
Answer Sheets		
• TOPSPRO Student Test Record (set of 100)	TRUS-019	\$75.00
• Consumer Profile Record (set of 100)	COUS-019	\$75.00

Adult Life Skills Series 

Target Population Adults who have intellectual disabilities

Timing 90 minutes

Uses Progress testing to determine life and work reading skills

Format One-on-one testing. Responses in individuals’ preferred mode of communication

Difficulty Level Pre-beginning literacy (Levels 2A to 5A)

Training Requirement Modules **1** and **3** <http://training.casas.org/>

			Code	Price
Test Administration Manual for Adult Life Skills Series (with answer keys, scoring information, test administration directions). Order at least one manual per agency site.	Forms 312-352		TAMS-SP	\$30.00
Appraisal Test Form 352 (set of 1 each)			SPA-352	\$45.00
Pre- and Post-Tests	Level 2A	Form 312 (set of 1 each)	SP-312	\$45.00
		Form 313 (set of 1 each)	SP-313	\$45.00
	Level 3A	Form 322 (set of 1 each)	SP-322	\$45.00
		Form 323 (set of 1 each)	SP-323	\$45.00
		Form 332 (set of 1 each)	SP-332	\$45.00
	Level 4A	Form 333 (set of 1 each)	SP-333	\$45.00
		Form 342 (set of 1 each)	SP-342	\$45.00
	Level 5A	Form 343 (set of 1 each)	SP-343	\$45.00
TOPSPRO Student Test Record (set of 100)			TRUS-019	\$75.00

CASAS offers a wide variety of assessments approved for Measuring Student Gains in the National Reporting System (NRS) for your ESL and ABE/ASE programs.

<https://tinyurl.com/2pvnkwxj>

ABE/ASE Learners

Modality	Test Series	Forms	NRS Approval Through June 30, 2024	NRS Approval Through February 5, 2025	NRS Approval Through July 2030
Reading	Reading GOALS	901R–908R		✓	
Math	“NEW” Math GOALS 2	921M–930M			✓
	Math GOALS	913M, 914M, 917M, 918M	✓		

English Language Learners

Modality	Test Series	Forms	NRS Approval Through June 30, 2025	NRS Approval Through July 2030
Reading	“NEW” Reading STEPS	621R–630R		✓
	Beginning Literacy Reading	27R–28R	✓	
	Life and Work Reading	81R–188R	✓	
	Secondary Level Assessment for Language Arts	513R–514R	✓	
	Citizenship	951R, 951RX–952RX	✓	
Listening	“NEW” Listening STEPS	621L–630L		✓
	Life and Work Listening Series	981L–986L	✓	

Skill Level Descriptors

Skill Level Descriptors provide a common scale for interpreting test results. The scale has been verified on nearly four million adults and youth. Descriptors display the relationship of CASAS test scores to NRS Educational Functioning Levels. Skill areas include reading, math, listening, speaking, and writing.

Scale Scores NRS Educational Functioning Levels and Grade Levels

The Workforce Innovation and Opportunity Act (WIOA) requires states to report performance outcomes to monitor program performance. For states to meet these requirements, local programs use CASAS standardized assessments to collect and report data on learning gains.

A	Page	M	Page
Answer Sheets	17-18	Math Tests	10
Appraisals	4	Math GOALS 2	10
Reading STEPS	8	Math GOALS	12
Listening STEPS	9	N	
Math GOALS 2	10	National External Diploma Program® (NEDP)	19
Reading GOALS	11	National Reporting System (NRS)	28
Math GOALS	12	P	
Life and Work Reading	13	POWER	27
Life and Work Listening	14	R	
Bureau of Prisons Placement Test	24	Reading Tests	
B		Reading STEPS	8
Basic Skills Assessment		Reading GOALS	11
Reading STEPS	8	Beginning Literacy	13
Math GOALS 2	10	Life and Work Reading	13
Reading GOALS	11	Reading for Citizenship	15
Math GOALS	12	Spanish Reading Comprehension	16
Beginning Literacy	13	Secondary Level Assessment	20
Life and Work	13-14	Braille Reading Assessment	26
Braille Reading Assessment	26	S	
Bureau of Prisons	24	Secondary Level Assessment	20
C		Skill Level Descriptors	28
CASAS eTests Online	6	Spanish Reading Comprehension	16
Citizenship	15-16	Speaking Tests	
Correctional Education	24	Citizenship Interview Test	16
E		Workplace Speaking	22
Essay Test	23	Special Needs	27
F		T	
Federal Bureau of Prisons	24	Training Workshops	5
I		TOPSpro Enterprise Software	7
Intellectual Disabilities	27	V	
L		Visual Impairment	25-26
Life and Work Reading	13	W	
Listening Tests		Workforce Skills Certification System	21
Listening STEPS	9	Workplace Speaking	22
Life and Work Listening	14	Writing Assessment	23
Large-print Resources	26		