

User Guide – How to Install SAFE EXAM BROWSER (SEB)

Table of Contents

Introduction.....	2
Steps to Install the Safe Exam Browser (SEB):.....	2
Desktop shortcut.....	8
Troubleshooting.....	11

Introduction

Safe Exam Browser is a web browser environment for administering CASAS assessments safely. The software turns any computer temporarily into a secure workstation. It controls access to resources like system functions, other websites and applications and prevents unauthorized resources being used during an exam.

Steps to Install the Safe Exam Browser (SEB):

1. Open the link for your region in your web browser:

a. California server

<https://ca.etestsonline.org/etests2/>

b. Global server

<https://etestsonline.org/etests2/>

c. Washington server

<https://etestsonline.org/Washington/eTests2/>

d. LARAEC server

<https://laraec.etestsonline.org/eTests2/>

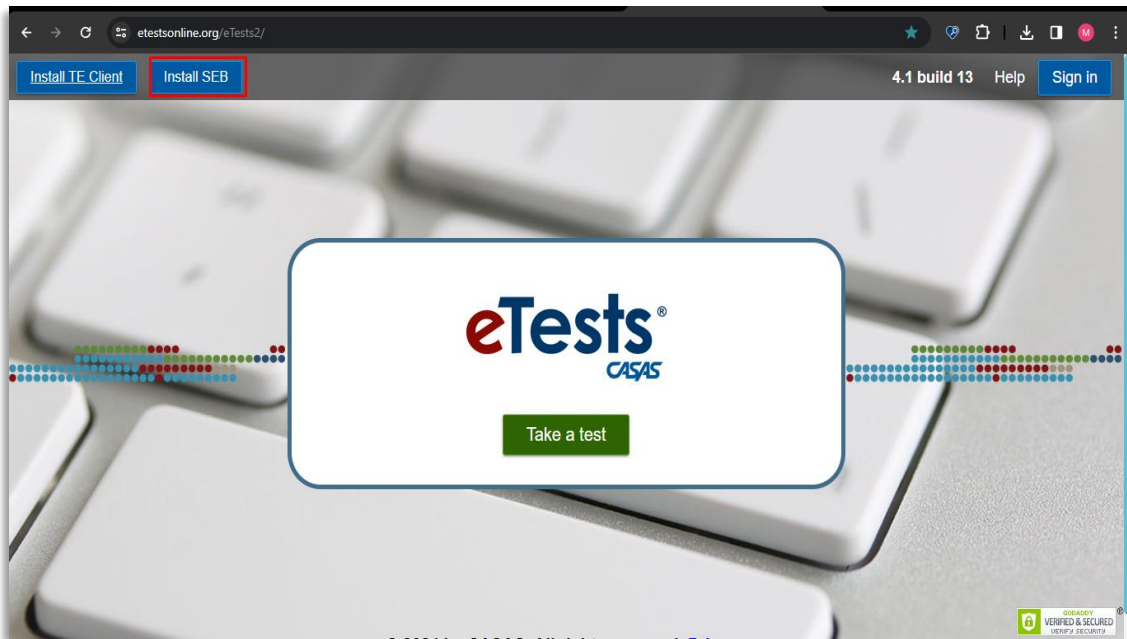
e. Miami Dade server

<https://etestsonline.org/MiamiDade/eTests2/>

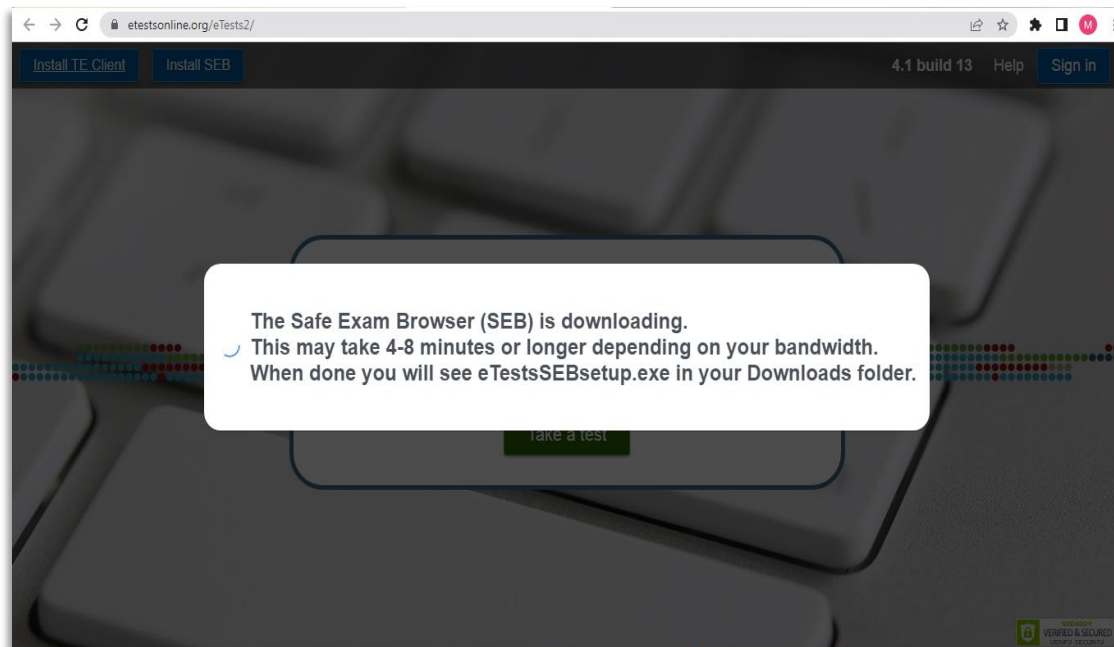
f. Florida server

<https://etestsonline.org/Florida/eTests2/>

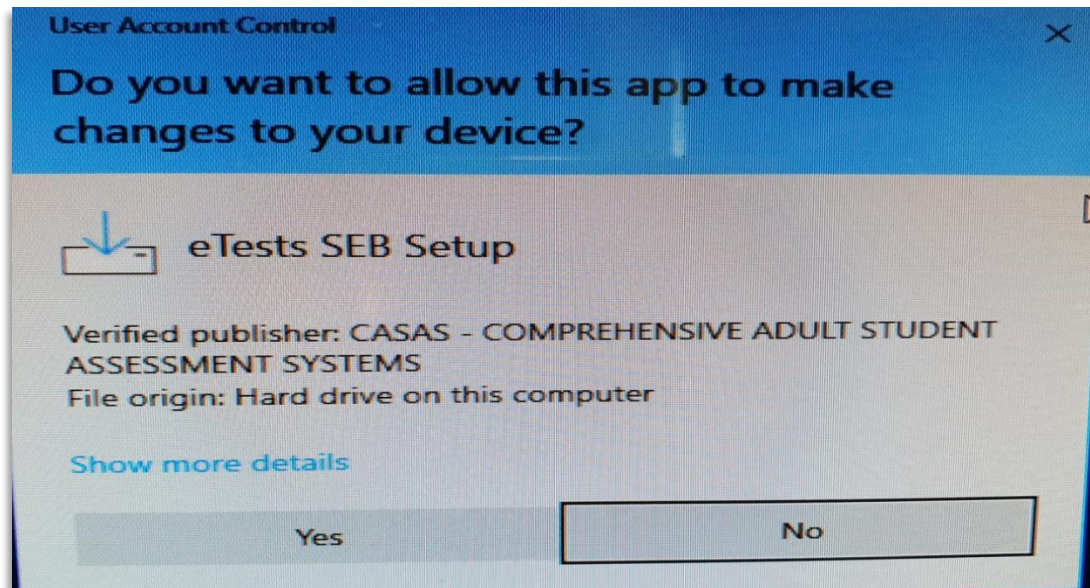
2. Click on the "Install SEB " button.



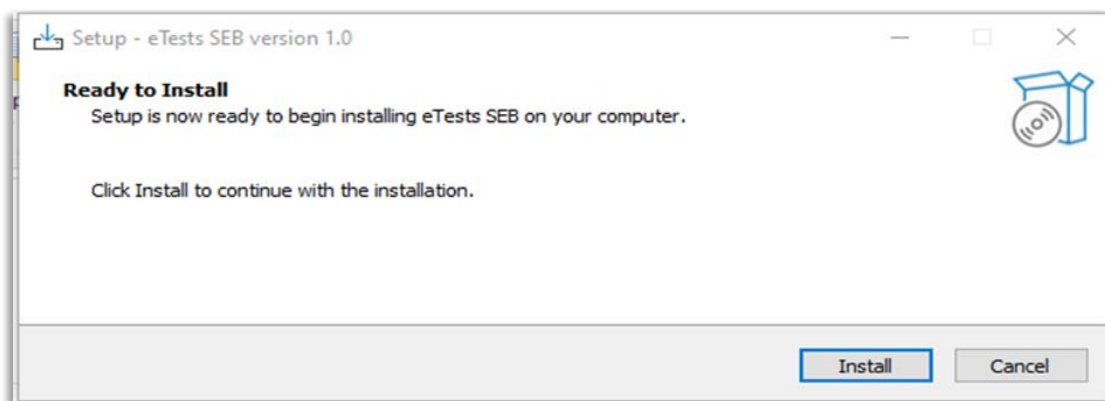
3. The SEB setup is downloading, it takes time (few minutes depending on the bandwidth) to download.



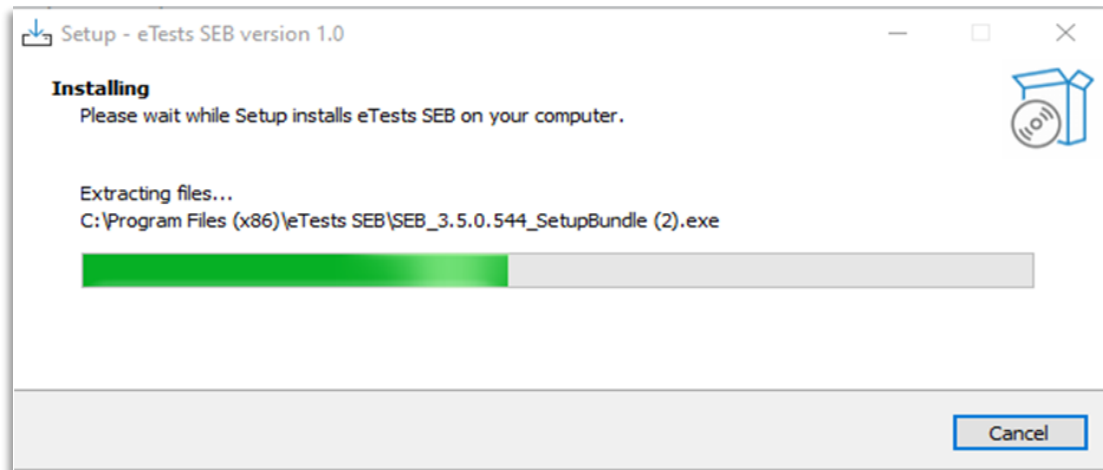
4. After downloading click on the “Yes” button. (You may get a different message window than this one.)



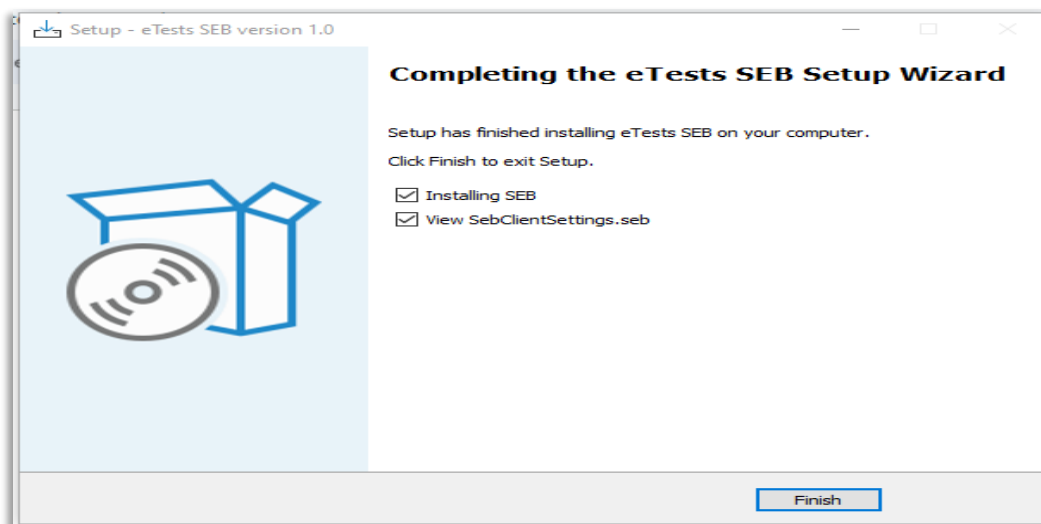
5. Next an installation wizard will begin.



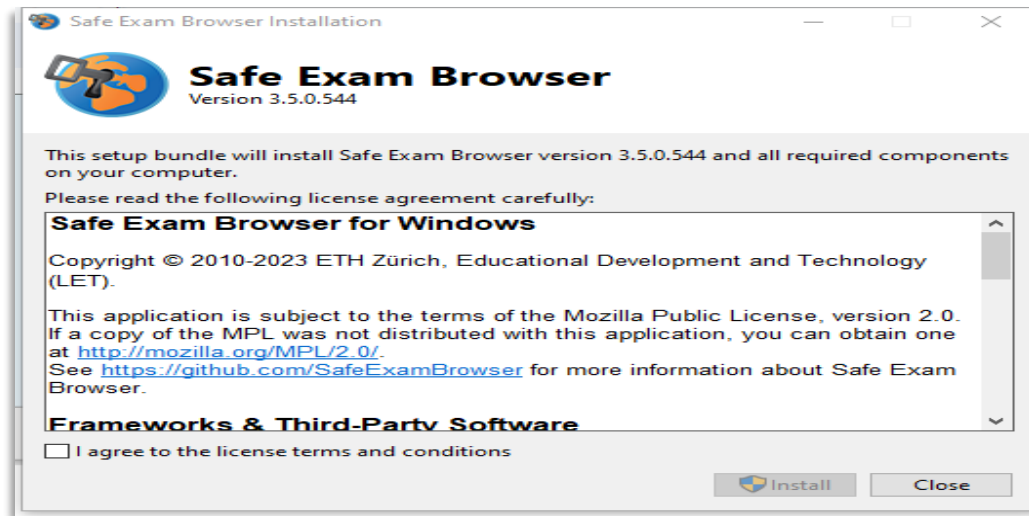
6. Click on the Install button.



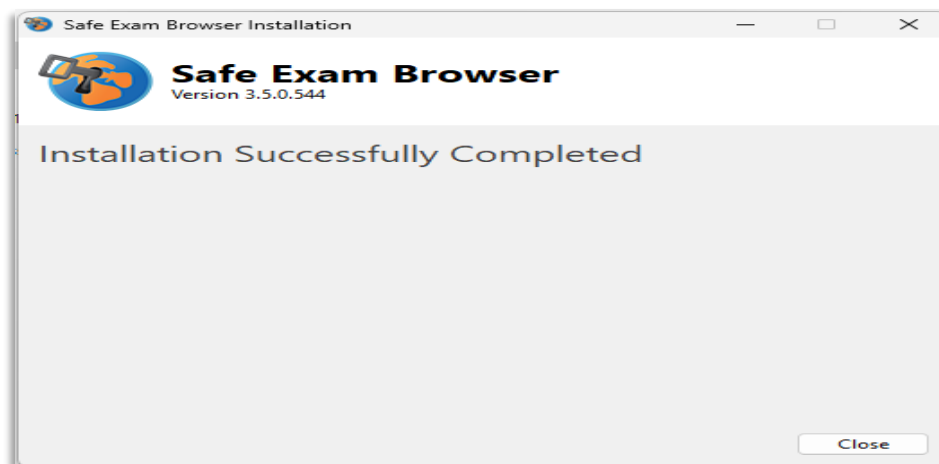
7. After the installation process, click Finish.



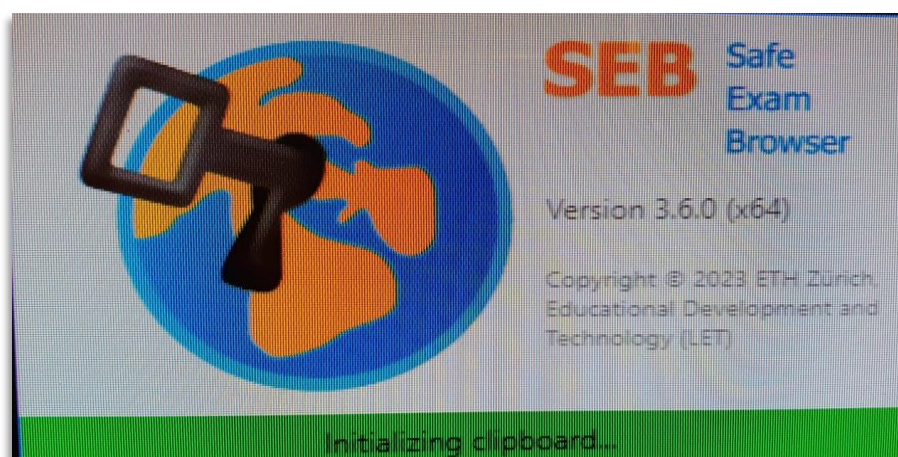
8. Next the SEB installation popup appears. Select “I agree ...” to activate the Install button.



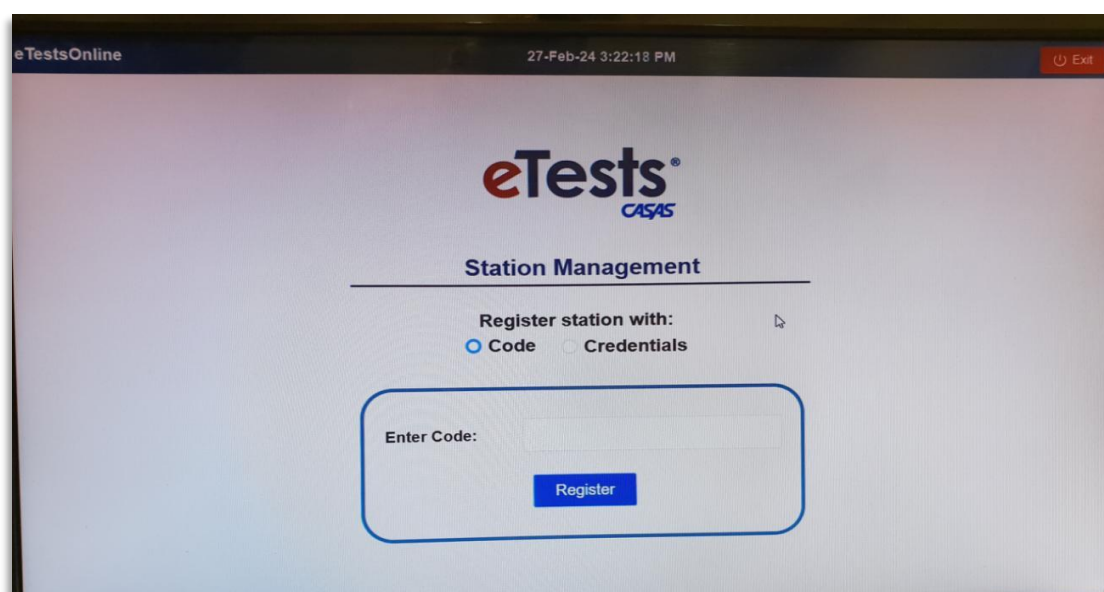
9. When installation is completed successfully, you'll see this screen.



10. With the installation completed, SEB will be initialized.



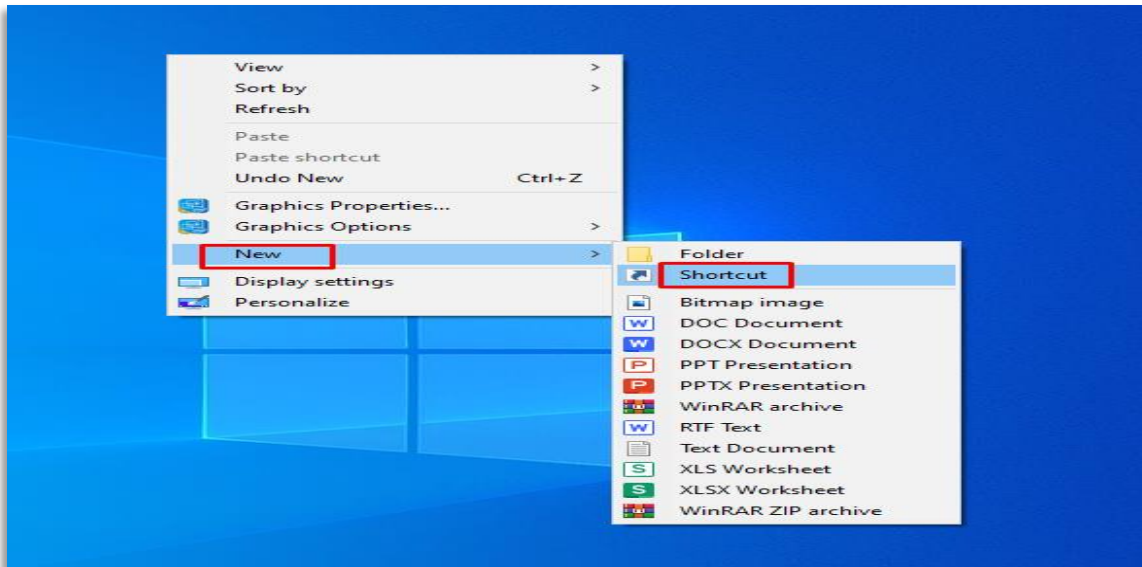
11. After initialization, CASAS eTests page loads and you are taken to the Station Management page.



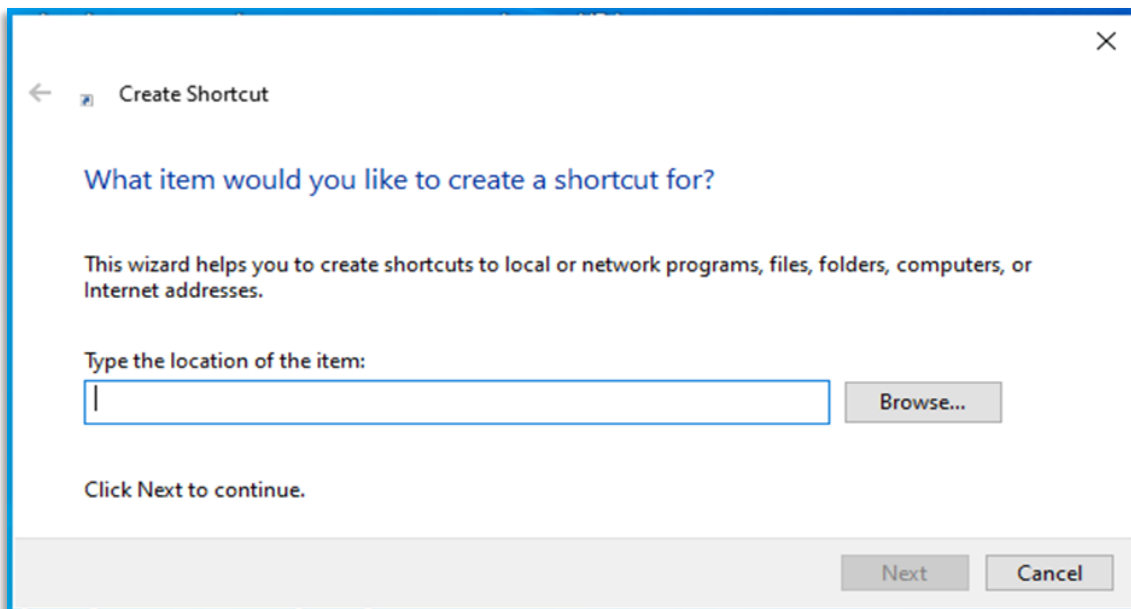
Desktop shortcut

To have SEB accessible easily, it is recommended to create a desktop shortcut:

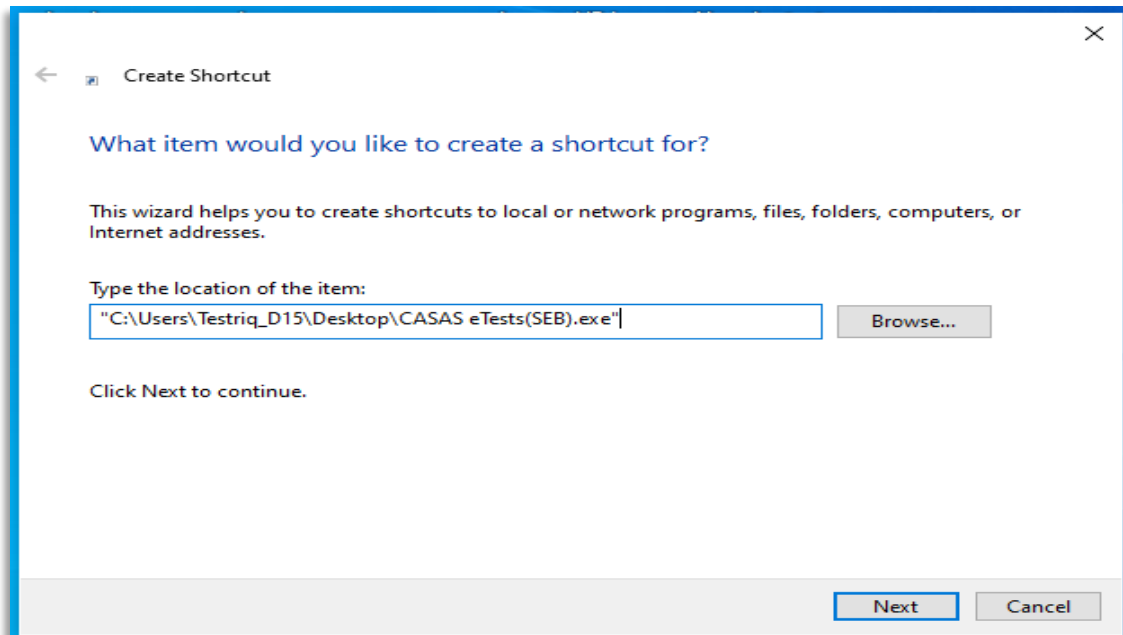
1. Right-click on free space, i.e. anywhere on the desktop. Then click “New” followed by “Shortcut”.



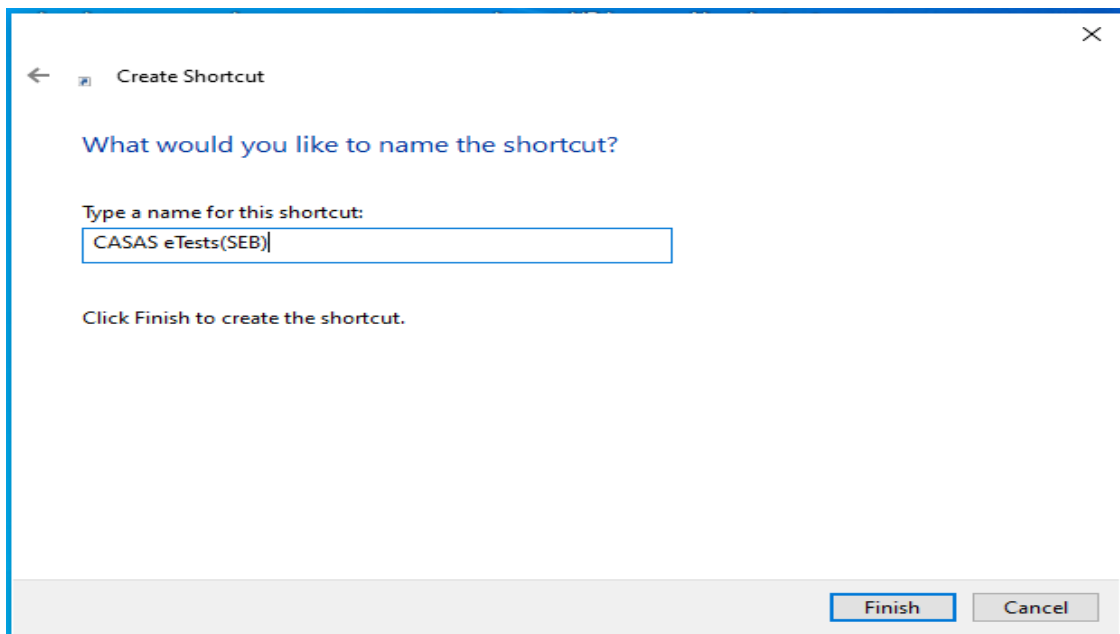
2. Now browse the location of the downloaded file or type the address of the file.



3. Click on the Next button.



4. Click on the Finish button.



5. The “Desktop shortcut” has been created then the application can be easily accessible with just a click.

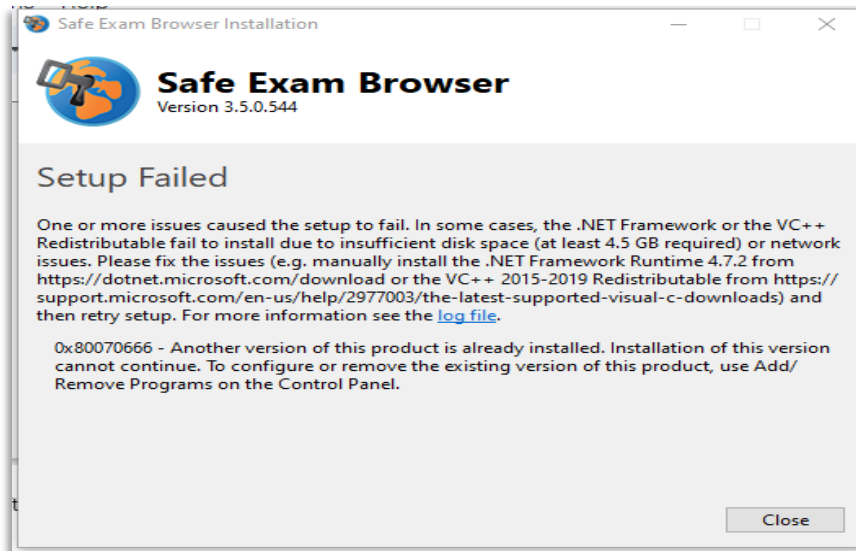


Another way to create a SEB file shortcut is to search for the installation folder, right-click on the executable file, choose “create shortcut” option and get the Desktop shortcut with an arrow icon.

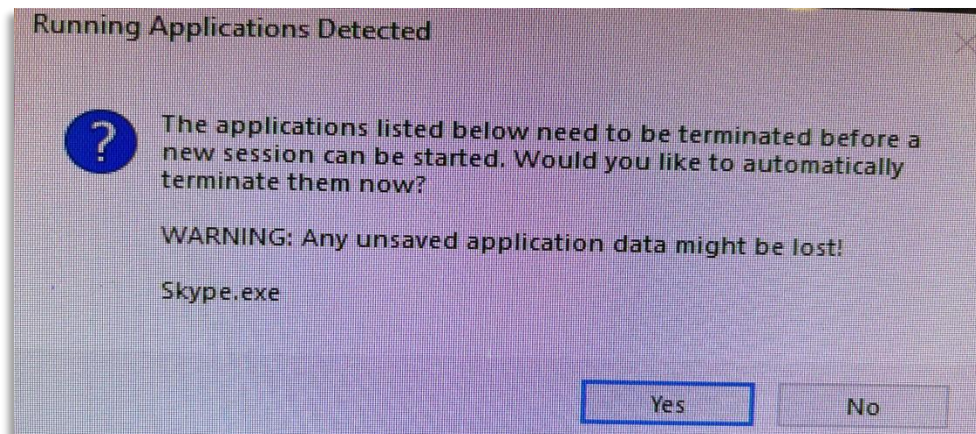


Troubleshooting

1. During installation, the setup wizard may show various warning or error messages and the setup will fail. Please pay attention to the messages as they will include details of why the setup was interrupted. Please contact your IT support, and, if needed, contact CASAS Tech Support to help you with the installation.



2. During initialization, SEB will check background processes to see if any of them cannot be allowed while SEB is running. In such cases, you may get the similar messages.



Allow SEB to close the processes and continue.