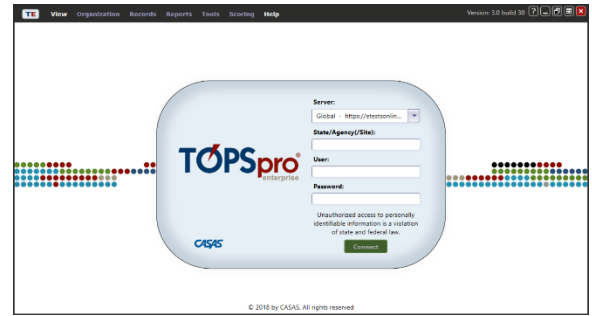


Steps to Access TE Online

From Windows machines,

To access TOPSpro Enterprise Online (TE) for the first time, launch the web browser and enter the URL for the CASAS Online System your program uses.*



Server	Use any modern web browser
*Global	https://etestsonline.org/html5/#/
*California	https://ca.etestsonline.org/html5/#/
*LARAEC	https://laraec.etestsonline.org/html5/#/
*Miami Dade	https://etestsonline.org/MiamiDade/html5/#/
*Washington	https://etestsonline.org/Washington/html5/#/

❖ For Training, go to [Rolling Hills Simulation](https://etestsonline.org/rollinghills/html5/#/) – <https://etestsonline.org/rollinghills/html5/#/>

Step	Screen	Description
1.		<ul style="list-style-type: none"> Access TE in one of three ways, from the – <ol style="list-style-type: none"> Web browser <ul style="list-style-type: none"> Click Install TE Client if first access on local machine. Taskbar icon Desktop icon
2.		<ul style="list-style-type: none"> Click the Server field down-arrow and from the drop-down menu, <ul style="list-style-type: none"> Select the Server for your online account.(see above*) Enter your Agency ID. Enter your User name. Enter your Password. Click Connect.