

CASAS National News and Updates Webinar

May 13, 2026

Celebrating Moms!!!



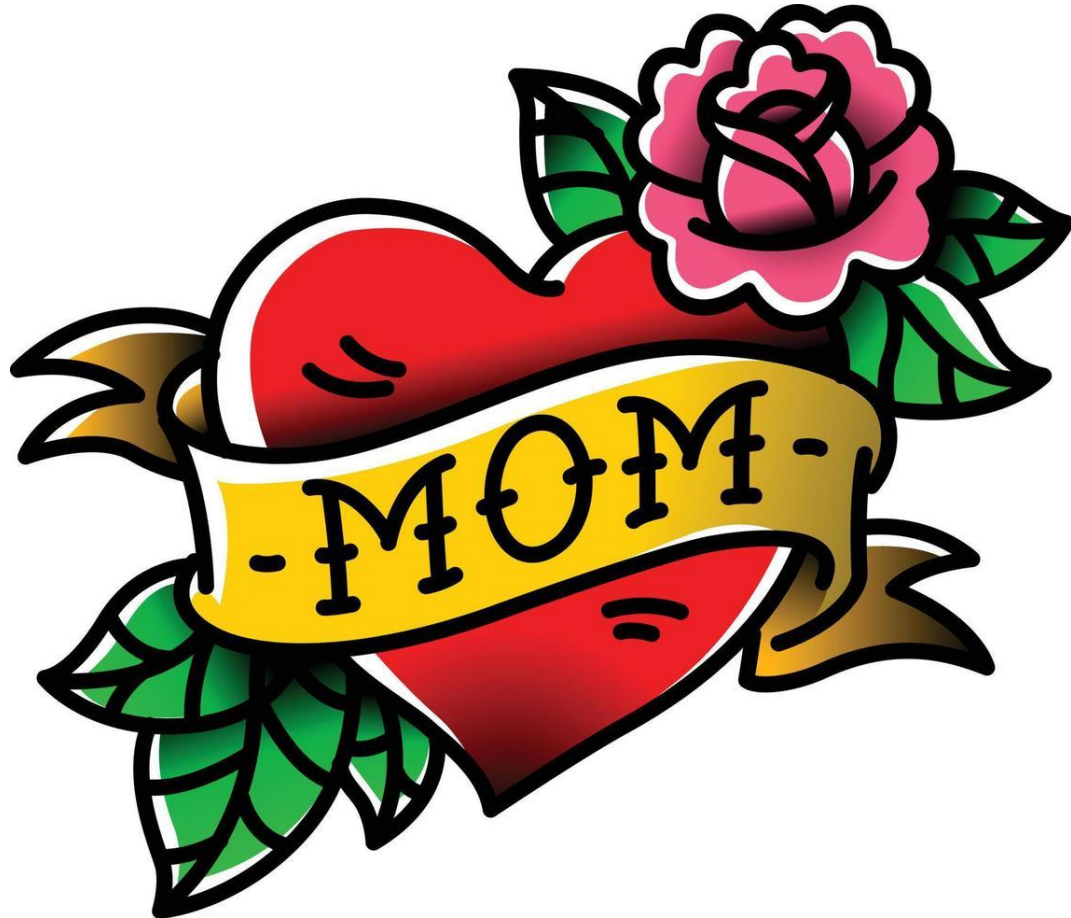
#Housekeeping



Welcome to the February 2026 CASAS National Webinar

- Presentation questions?
USE Q & A
- Technical Difficulties?
USE CHAT
- **PowerPoint** is posted on the
[Webinar Webpage](#)
- Webinar recording will be
posted by the end of the week

AGENDA



- **Assessment Update**
- **NCL Update**
- **Promising Practice: Using AI**
- **TE Advice for End-of-the-Year**
- **CASAS Website Tour**
- **Upcoming Events**



Are you going
out wearing
THAT?!

Assessment Update

“Everyone’s on their own journey.”



ABE Reading Assessments

NRS Approved

Reading GOALS

Available Now!

NRS-approved through

June 30, 2026



Reading GOALS 2

Available Now!

NRS-approved through

2032



Transition Reminders!!

Paired Tests?

- No mixing Reading GOALS and Reading GOALS 2!

Proxy?

- If implementing Reading GOALS 2 July 1, 2026, do not proxy Reading GOALS tests into new PY

Paper Materials?

- Discard and shred – contact CASAS

WTUs/TEUs?

- Not test specific – can use for any test

ABE Math Assessments NRS Approved

Math GOALS 2

Available Now!

NRS-approved through

2030

GOALS 2

CASAS

ESL Assessments NRS Approved

Reading STEPS

Available Now!

**NRS-approved through
2030**



Listening STEPS

Available Now!

**NRS-approved through
2030**






Levels B - E Inaccurate Scores (*)

- Reading GOALS 2
- Math GOALS 2
- Reading STEPS
- Listening STEPS



Reducing Retesting

New Lower-End Estimate Scores

- **Modifying the top of the inaccurate range to include new lower-end estimate scores.**
- **Reportable scale scores and NRS level classification**
- **Operationally similar to Conservative Estimates **
- **Retesting NOT required**

Reading GOALS 2 Level B, Form 923R

Next Assigned Tests – Level B, Form 923R

Student Raw Score	Student Scale Score	NRS EFL	Next Assigned Test
0	*		Level A Form 921R or 922R
1	*		
2	*		
3	*		
4	*		
5	*		
6	*		
7	*		
8	*		
9	*		
10	204		Level B Form 924R
11	205		
12	206		
13	207	2	
14	208		

**Approx. 75% of all tests
requiring retesting**



Updated Reading GOALS 2 Level B, Form 923R

Next Assigned Tests – Level B, Form 924R

Student Raw Score	Student Scale Score	NRS EFL	Next Assigned Test
0	*		Level A Form 921R or 922R
1	*		
2	*		
3	*		
4	*		
5	*		
6	*		
7	204 ♦	2	Retest Now: Level A, Form 921R or 922R
8	204 ♦		Or
9	204 ♦		After instruction: Level B, Form 923R
10	204		
11	205		
12	206		

Lower-End Estimate

Jeff Fantine, PhD
Executive Director
National Coalition for Literacy



Digital ATDN Presents

Clear Minds, Smart Tools: AI Guidelines and Cognitive Load in Action

15

Jose Adorno, Digital ATDN Coordinator

May 12, 2026



www.atdnct.org



www.digital.atdnct.org

What is...

ATDN & Digital ATDN?

The Adult Training & Development Network (ATDN and Digital ATDN) are...

- Services funded by the Connecticut State Department of Education, Academic Office, to provide training opportunities and resources for Adult Education programs across the state.
- Home to professional and comprehensive in-person and online training for Adult Education professionals in numerous areas across the state.



AI is Fast... But what are we offloading?

AI gives us quick answers, but every use comes with a decision.

- Faster doesn't always mean better
- Every AI use involves a decision
- What we offload shapes what we retain
- The goal is not to avoid AI, but to use it intentionally



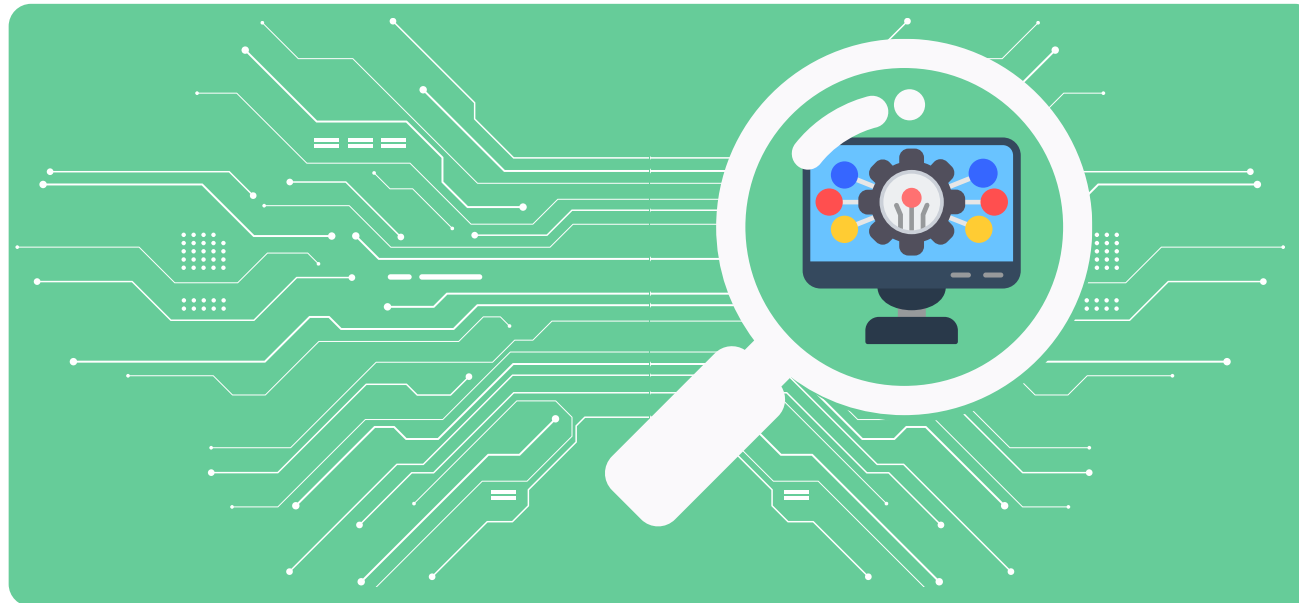
Today I want to share two guides...

- Essential AI Guidelines for Effective Use
- Cognitive load variability



Using the Effective Use Lens

Before exploring AI's evolution and our changing approach, we first need to ground ourselves in the Effective Use lens.



ESSENTIAL AI GUIDELINES FOR EFFECTIVE USE



Maximize the benefits of AI while keeping these key tips in mind:

Never Share Private Information

AI prompts might be stored to improve models. Avoid including any sensitive or personal data to protect privacy.

Always Check for Discrimination & Bias

AI can produce biased content influenced by its training data. Review outputs carefully to ensure fairness and inclusivity.

Fact-Check AI Responses

AI-generated content may be inaccurate or misleading. Always verify information using trusted and reliable sources.

Refine or Try Again

AI responses depend on the prompt provided. Adjust or rephrase your input to improve accuracy and better meet your needs.

Verify Privacy and Usage Terms

Using AI to adapt materials must align with your resource terms. Check usage policies to prevent unintended issues.

By keeping these guidelines in mind, you can integrate AI safely and effectively into your teaching practices.

Essential AI Guidelines for Effective Use



The infographic provides guardrails that allow us to use AI safely and is available on our website.

- Never share private information
- Always check for discrimination and bias
- Fact-check AI Responses
- Refine or Try Again
- Verify Privacy and Usage Terms

ESSENTIAL AI GUIDELINES FOR EFFECTIVE USE

Maximize the benefits of AI while keeping these key tips in mind:

- Never Share Private Information**
AI prompts might be stored to improve models. Avoid including any sensitive or personal data to protect privacy.
- Always Check for Discrimination & Bias**
AI can produce biased content influenced by its training data. Review outputs carefully to ensure fairness and inclusivity.
- Fact-Check AI Responses**
AI-generated content may be inaccurate or misleading. Always verify information using trusted and reliable sources.
- Refine or Try Again**
AI responses depend on the prompt provided. Adjust or rephrase your input to improve accuracy and better meet your needs.
- Verify Privacy and Usage Terms**
Using AI to adapt materials must align with your resource terms. Check usage policies to prevent unintended issues.

By keeping these guidelines in mind, you can integrate AI safely and effectively into your teaching practices.

www.digital.atdnet.org

Essential AI Guidelines for Effective Use

Fact-Check for AI Responses: Deepfakes



A deepfake is a video, photo, or audio recording that seems real but has been manipulated with AI. [...] Deepfakes can depict someone appearing to say or do something that they in fact never said or did.



[YouTube Video](#) | [Instagram Post](#)

[U.S. Government Accountability Office \(GAO\) Click here to learn more.](#)

ESSENTIAL AI GUIDELINES FOR EFFECTIVE USE

Maximize the benefits of AI while keeping these key tips in mind:

- Never Share Private Information**
AI prompts might be stored to improve models. Avoid including any sensitive or personal data to protect privacy.
- Always Check for Discrimination & Bias**
AI can produce biased content influenced by its training data. Review outputs carefully to ensure fairness and inclusivity.
- Fact-Check AI Responses**
AI-generated content may be inaccurate or misleading. Always verify information using trusted and reliable sources.
- Refine or Try Again**
AI responses depend on the prompt provided. Adjust or rephrase your input to improve accuracy and better meet your needs.
- Verify Privacy and Usage Terms**
Using AI to adapt materials must align with your resource terms. Check usage policies to prevent unintended issues.

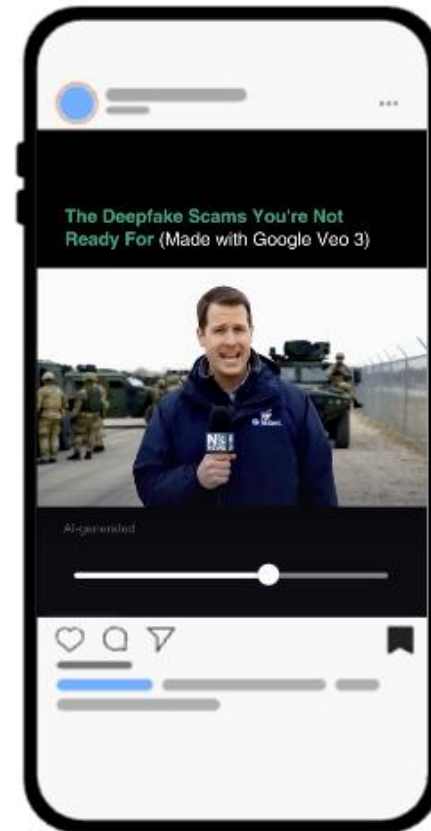
By keeping these guidelines in mind, you can integrate AI safely and effectively into your teaching practices.

www.digital.atdnct.org

Essential AI Guidelines for Effective Use

Fact-Check for AI Responses: In Real Context

AI-generated content may be inaccurate or misleading. Always verify information using trusted and reliable sources.



[YouTube Video](#) | [Instagram Post](#)

ESSENTIAL AI GUIDELINES FOR EFFECTIVE USE



Maximize the benefits of AI while keeping these key tips in mind:

Never Share Private Information

AI prompts might be stored to improve models. Avoid including any sensitive or personal data to protect privacy.

Always Check for Discrimination & Bias

AI can produce biased content influenced by its training data. Review outputs carefully to ensure fairness and inclusivity.

Fact-Check AI Responses

AI-generated content may be inaccurate or misleading. Always verify information using trusted and reliable sources.

Refine or Try Again

AI responses depend on the prompt provided. Adjust or rephrase your input to improve accuracy and better meet your needs.

Verify Privacy and Usage Terms

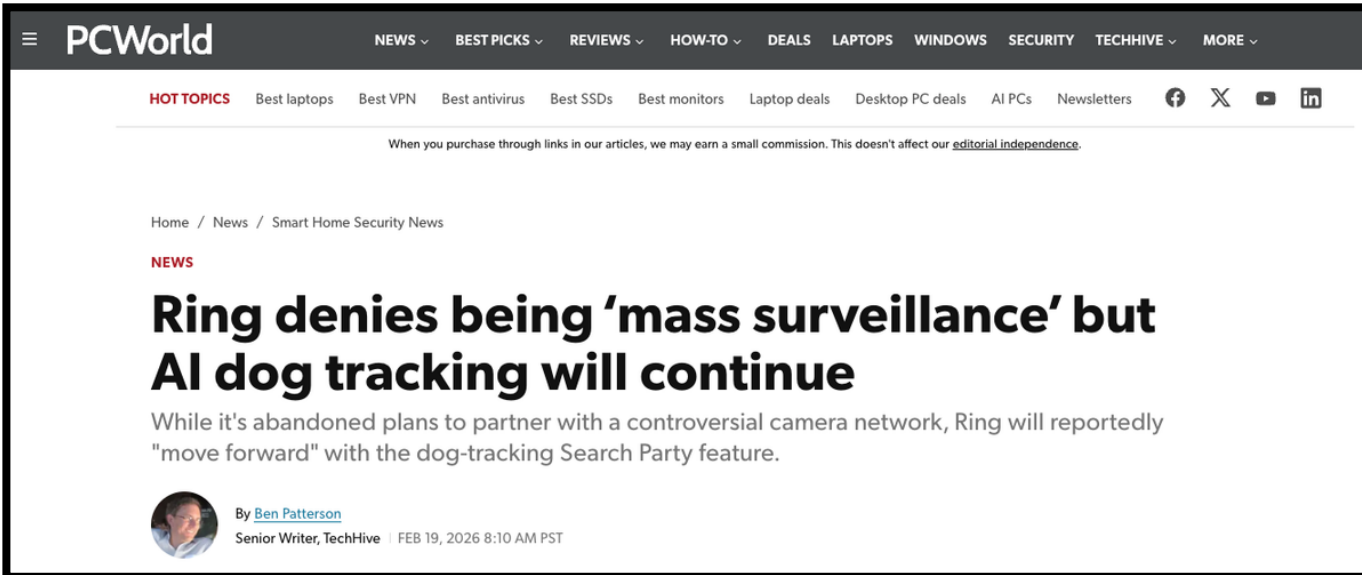
Using AI to adapt materials must align with your resource terms. Check usage policies to prevent unintended issues.

By keeping these guidelines in mind, you can integrate AI safely and effectively into your teaching practices.



Headlines Activity #4: PCWorld

Determine which articles belong to a guideline



PCWorld

NEWS ▾ BEST PICKS ▾ REVIEWS ▾ HOW-TO ▾ DEALS LAPTOPS WINDOWS SECURITY TECHHIVE ▾ MORE ▾

HOT TOPICS Best laptops Best VPN Best antivirus Best SSDs Best monitors Laptop deals Desktop PC deals AI PCs Newsletters

When you purchase through links in our articles, we may earn a small commission. This doesn't affect our [editorial independence](#).

Home / News / Smart Home Security News

NEWS

Ring denies being 'mass surveillance' but AI dog tracking will continue

While it's abandoned plans to partner with a controversial camera network, Ring will reportedly "move forward" with the dog-tracking Search Party feature.

By [Ben Patterson](#)
Senior Writer, TechHive | FEB 19, 2026 8:10 AM PST

[The Superbowl Ad promoting Search Party from Ring](#)

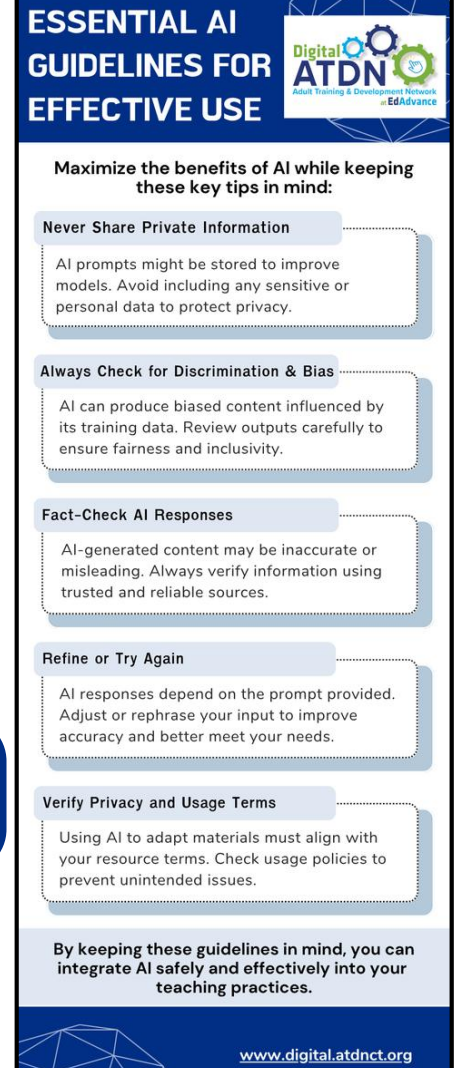
Never share private information

Always check for discrimination and bias

Fact-check AI Responses

Refine or Try Again

Verify Privacy and Usage Terms



ESSENTIAL AI GUIDELINES FOR EFFECTIVE USE

Maximize the benefits of AI while keeping these key tips in mind:

- Never Share Private Information**
AI prompts might be stored to improve models. Avoid including any sensitive or personal data to protect privacy.
- Always Check for Discrimination & Bias**
AI can produce biased content influenced by its training data. Review outputs carefully to ensure fairness and inclusivity.
- Fact-Check AI Responses**
AI-generated content may be inaccurate or misleading. Always verify information using trusted and reliable sources.
- Refine or Try Again**
AI responses depend on the prompt provided. Adjust or rephrase your input to improve accuracy and better meet your needs.
- Verify Privacy and Usage Terms**
Using AI to adapt materials must align with your resource terms. Check usage policies to prevent unintended issues.

By keeping these guidelines in mind, you can integrate AI safely and effectively into your teaching practices.

www.digital.atdnet.org

Headlines Activity #4: PCWorld

Determine which articles belong to a guideline

The screenshot shows the PCWorld website header with navigation menus for NEWS, BEST PICKS, REVIEWS, HOW-TO, DEALS, LAPTOPS, WINDOWS, SECURITY, TECHHIVE, and MORE. Below the header, there are social media icons and a disclaimer: "When you purchase through links in our articles, we may earn a small commission. This doesn't affect our editorial independence." The article title is "Ring denies being 'mass surveillance' but AI dog tracking will continue" by Ben Patterson, dated FEB 19, 2026 8:10 AM PST. The article text states: "While it's abandoned plans to partner with a controversial camera network, Ring will reportedly 'move forward' with the dog-tracking Search Party feature."

[The Superbowl Ad promoting Search Party from Ring](#)

Never share private information

Always check for discrimination and bias

Fact-check AI Responses

Refine or Try Again

Verify Privacy and Usage Terms

ESSENTIAL AI GUIDELINES FOR EFFECTIVE USE

- Maximize the benefits of AI while keeping these key tips in mind:**
 - Never Share Private Information**

AI prompts might be stored to improve models. Avoid including any sensitive or personal data to protect privacy.
 - Always Check for Discrimination & Bias**

AI can produce biased content influenced by its training data. Review outputs carefully to ensure fairness and inclusivity.
 - Fact-Check AI Responses**

AI-generated content may be inaccurate or misleading. Always verify information using trusted and reliable sources.
 - Refine or Try Again**

AI responses depend on the prompt provided. Adjust or rephrase your input to improve accuracy and better meet your needs.
 - Verify Privacy and Usage Terms**

Using AI to adapt materials must align with your resource terms. Check usage policies to prevent unintended issues.

By keeping these guidelines in mind, you can integrate AI safely and effectively into your teaching practices.

www.digital.atdnet.org

Part 2:

Cognitive Load Variability - Its all in the Goal!



www.atdnct.or



www.digital.atdnct.or

The Learning Journey Analogy

What influences the way we reach a destination?

The destination is 10 miles away...



- What questions would you ask before making a decision?
- What benefits do we have by choosing a specific method of transportation?

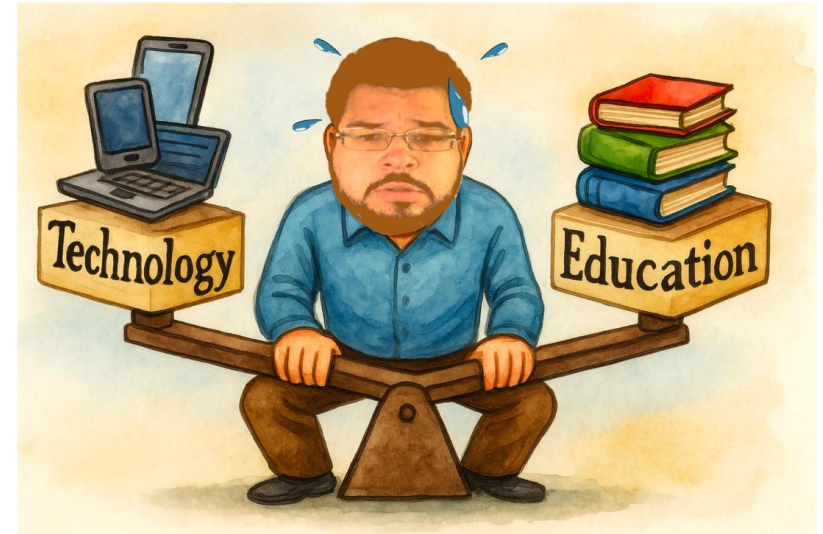
The Role of AI in Learning

Cognitive Load Variability

Shifting the Load to Support the Goal

AI's role in learning depends on how we use it. In some cases, it minimizes the learner's cognitive effort; in others, it redistributes the load to allow more meaningful engagement. *The key is using AI in ways that match the learning goal*, whether that's saving time, supporting access, or promoting deeper thinking.

We can think of AI's role in learning along a spectrum of cognitive load redistribution:




Cognitive Load Variability

Shifting the Load to Support the Goal



AI as an accelerator to a finished product


 **Cognitive Load: Low**
engagement with learning process

AI handles most of the work with minimal learner input. This limits skill-building opportunities but may free up time for other tasks.

Example: Image Creation & Essay Generation on a simple prompt



AI as a support tool for efficiency and access


 **Cognitive Load: Moderate**
engagement; AI assists but doesn't replace process

AI helps with parts of the task (e.g., finding, translating, or summarizing information), allowing the learner to stay focused and proceed.

Example: Google Lens, language translation, [AI-review summaries](#)



AI as a path for customization and exploration

 **Cognitive Load: Distributed**
to support deeper thinking and personalized learning

AI adapts to the learner's needs, offering scaffolded practice or reformatted content that balances comprehension and learner effort.

Example: Multimodal formats, tailored activities, scaffolded practice

Digital ATDN's Artificial Intelligence Page

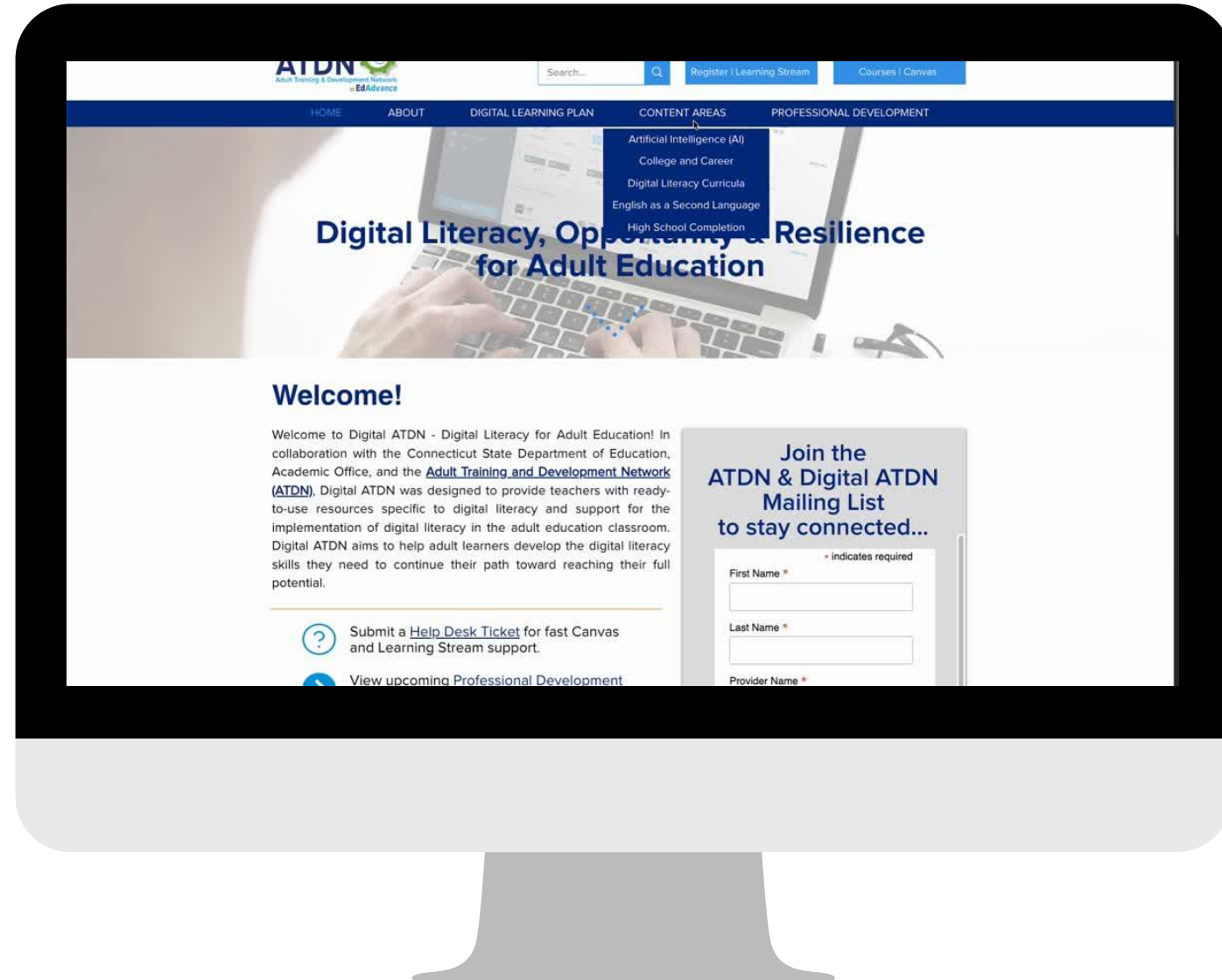
A place to develop AI Literacy to Adult Education agencies in CT



The Artificial Intelligence Content Area Page offers:

- The Different Types of Generative AI
- Essential AI Guidelines for Effective Use
- Curated Resources from Digital ATDN and other reliable organizations

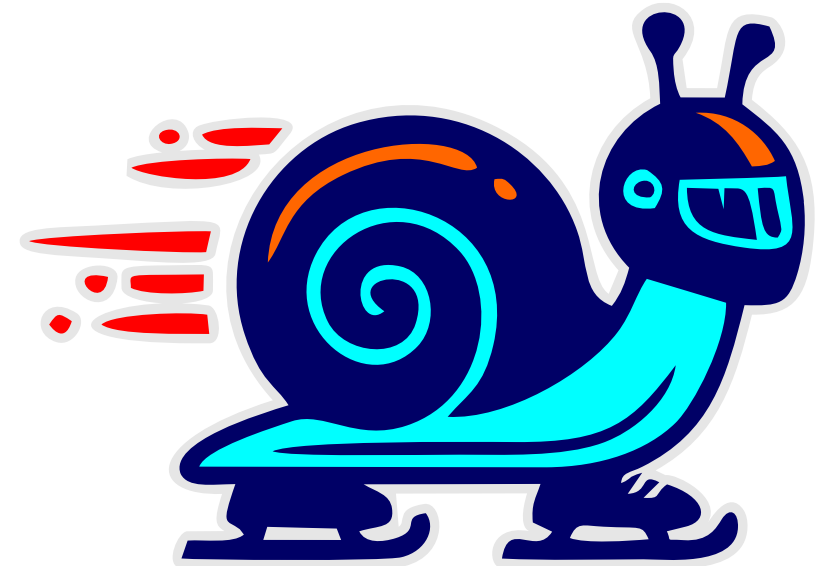
[Click here to access our AI Content Area Page.](#)



From Fast... to Thoughtful

AI is most effective when our decisions are intentional.

- AI is still fast, but now guided by purpose
- Decisions shape how AI supports learning
- Efficiency should support, not replace, thinking
- Small shifts lead to stronger outcomes





Who's Your Favorite Sit-Com Mom?

June Cleaver

“Leave it to Beaver”



Claire Huxtable

“The Cosby Show”



Carol Brady

“The Brady Bunch”



Gloria Pritchett

“Modern Family”

Passport to Performance Webinars

Jay Wright
Accountability Director



Let **CASAS**
Be Your
Compass!

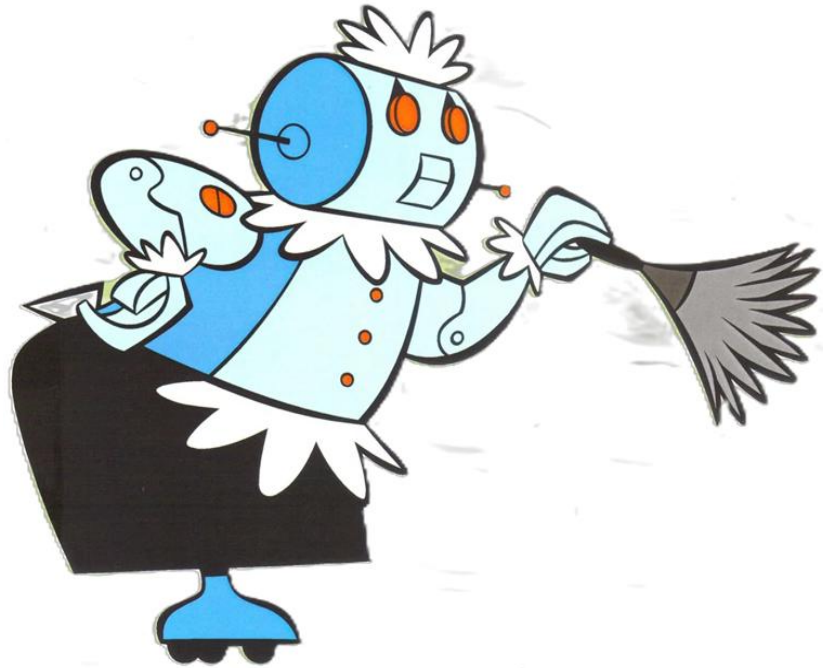
Passport to Performance Data Management

- Managing Personally Identifiable Information
 - Agency Data Share Wizard
 - Entering SSN/ITIN
- Duplicate Records
- Cleaning up Testing Sessions for the new PY
- Data Integrity Report
 - Zero or Empty Hours vs 1-11 Hrs vs 12+ Hrs
 - Birthdate/Gender/Race/Ethnicity
 - Passed HSE – add GED/HiSET ID
 - Pre/no Post-Test
 - Follow up Reporting
- Proxy Season – May 1st



Passport to Performance

State and Federal Requirements



- National NRS/WIOA II Data Performance Update
- Defining NRS MSG's
- Ensuring Data Collection meets requirements
 - WIOA Co-Enrollment
 - Labor Force Status
 - Distance Learning
 - Hours between Tests
- Managing Personally Identifiable Information
- Pre and Post-Testing for CTE
- Data Integrity Report
 - Report Analysis by Quarter
 - Definitions and Applications to WIOA Title II
- Proxy Wizard

Website Tour

Astrid Robitaille

National Program and Online
Training Specialist



**“Don’t ever try
and cut your
own bangs.”**



Where is test series information?

CASAS
ur
mpass!

Home > Products > Assessments

Order

ESL Assessments

ABE and ASE Assessments

IET and CTE Assessments

Workforce Assessments

Citizenship Assessments

Assessments

Discover the CASAS assessments designed for your program—measure reading, listening, math, writing, and speaking with confidence.

- ESL
- ABE/ASE
- IET / CTE
- Workforce
- Citizenship

Additional Assessments and Resources

- Appraisals
- Answer sheets
- Visual Impairment/Blindness

Assessments



eTests
CASAS



Home > Training and Support

WIOA and NRS Compliance

CASAS eTests Help

CASAS eTests Help Topics

TOPSpro Enterprise Help

TOPSpro Enterprise Help Topics

Online Training

California Adult Education Training

California Adult Education Accountability and Assessment

Testing Guidelines

Training and Support

Upcoming Events

CASAS Office Hours

Maximize the many features and resources of CASAS and bring old encouragement in using CASAS. Attend our office hours and bring your questions.

Friday, April 17, 2026 – 11:00 a.m. (PT)

Friday, May 8, 2026 – 11:00 a.m. (PT)

Friday, May 22, 2026 – 11:00 a.m. (PT)

Friday, June 5, 2026 – 11:00 a.m. (PT)

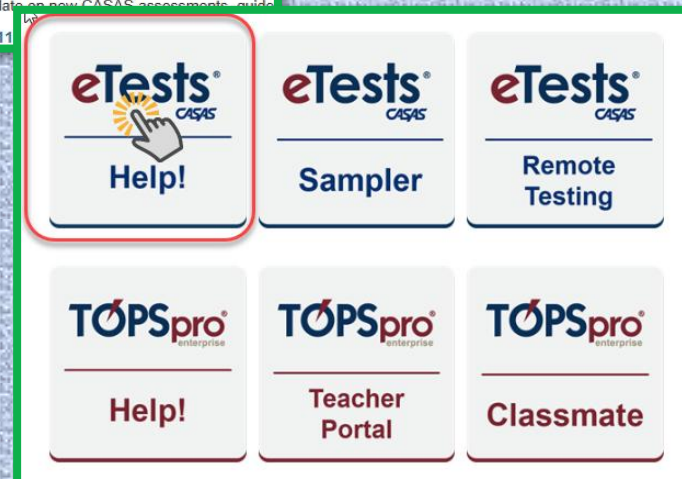
CASAS News and Updates Webinars

This is an informational overview and update on new CASAS assessments, guides, and resources.

Wednesday, May 13, 2026 – 11:00 a.m. (PT)



Where is
eTests Help?
casas.org



Where is the eTests Sampler?

Home > Training and Support

WIOA and NRS Compliance

CASAS eTests Help

CASAS eTests Help Topics

TOPSpro Enterprise Help

TOPSpro Enterprise Help Topics

Online Training

California Adult Education Training

California Adult Education Accountability and Assessment

Testing Guidelines

Training and Support

Upcoming Events

CASAS Office Hours

Maximize the many features and resources and bring old encouragement in using CASAS. Attend our sessions v

Friday, April 17, 2026 – 11:00 a.m. (PT)

Friday, May 8, 2026 – 11:00 a.m. (PT)

Friday, May 22, 2026 – 11:00 a.m. (PT)

Friday, June 5, 2026 – 11:00 a.m. (PT)

CASAS News and

This is an informational ov

Wednesday, Ma

 Help!	 Sampler	 Remote Testing
 Help!	 Teacher Portal	 Classmate

Where is TOPSpro Enterprise Help?

CASAS

Products Training and Support Workforce Partners

Home > Training and Support

- WIOA and NRS Compliance
- CASAS eTests Help
- CASAS eTests Help Topics
- TOPSpro Enterprise Help**
- TOPSpro Enterprise Help Topics
- Online Training
- California Adult Education Training
- California Adult Education Accountability and Assessment
- Testing Guidelines

Training and Support

Upcoming Events

CASAS Office Hours

Maximize the many features and resources of CASAS and bring old encouragement in using CASAS. Attend our office hours and bring your questions.

- Friday, April 17, 2026 – 11:00 a.m. (PT)
- Friday, May 8, 2026 – 11:00 a.m. (PT)
- Friday, May 22, 2026 – 11:00 a.m. (PT)
- Friday, June 5, 2026 – 11:00 a.m. (PT)

CASAS News and Updates Webinars

This is an informational overview and update on new CASAS as well as a Q&A session.

- Wednesday, May 13, 2026 – 11 a.m. (PT)

 Help!	 Sampler	 Remote Testing
 Help!	 Teacher Portal	 Classmate

Where can we register for Office Hours and the National Webinars?

CASAS

Products Training and Support Workforce Partners

Home > Training and Support

- WIOA and NRS Compliance
- CASAS eTests Help
- CASAS eTests Help Topics
- TOPSpro Enterprise Help
- TOPSpro Enterprise Help Topics
- Online Training
- California Adult Education Training
- California Adult Education Accountability and Assessment
- Testing Guidelines

Training and Support

Upcoming Events

CASAS Office Hours

Maximize the many features and resources available in CASAS. Join us and bring old encouragement in using CASAS. Attending participants will drive the session v

- Friday, April 17, 2026 – 11:00 a.m. (PT)
- Friday, May 8, 2026 – 11:00 a.m. (PT)
- Friday, May 22, 2026 – 11:00 a.m. (PT)
- Friday, June 5, 2026 – 11:00 a.m. (PT)

CASAS News and Updates Webinars

This is an informational overview and update on new CASAS assessments, guide

- Wednesday, May 13, 2026 – 11 a.m. (PT)

What about CASAS' curriculum partners?

CASAS®

Welcome, [Astrid Robitaille](#) | [Logout](#) | [Contact Us](#) |

[Products](#) | [Training and Support](#) | [Workforce Partners](#) | **[Education Partners](#)** | [New to CASAS?](#)

Educa

Home > [Education Partners](#)

[Correctional Education](#)

Education Partners

The Benefits: Increase literacy levels and improve accountability

Adult educators must focus on student achievement and program success. The two are tied together, and CASAS is here to assist you with both. The success of one ensures the success of the other. Your program can be assured that our tests meet federal accountability requirements.

Your instructors can target instruction based on accurate test results that document progress quickly and effectively.

You may review a few or as many of our assessments as you like right here! [CASAS assessments](#)

As an adult educator, you will be able to achieve even more with CASAS.

- Provide meaningful instruction that students relate to easily
- Prepare students for postsecondary education and the workforce
- Energize students to maximize their career potential

[QuickSearch Online](#) is a no-cost easy-to-use database of instructional resources coded to skill levels, skill areas, and CASAS Competencies. [QuickSearch](#) is your link between testing and instruction.

Curriculum and Instruction Partners

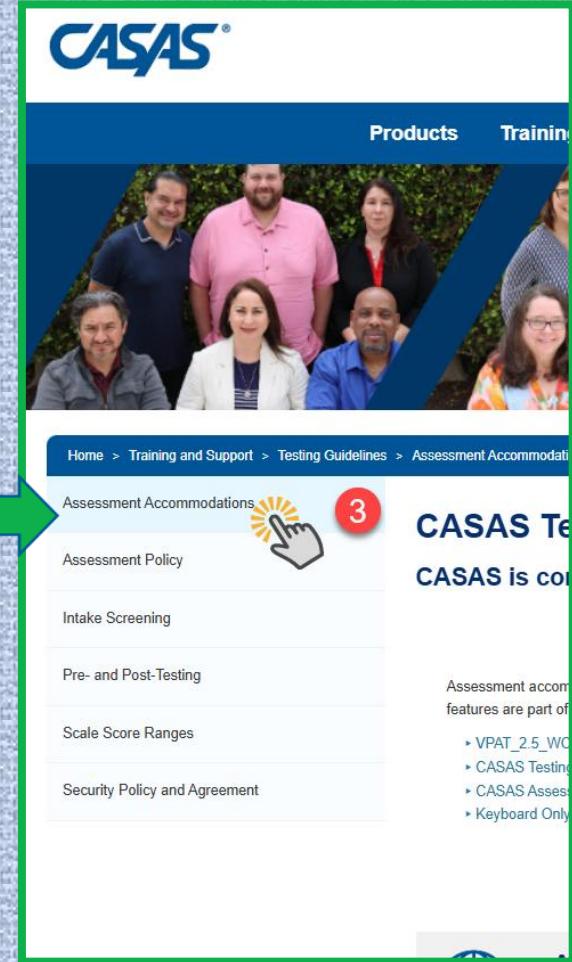
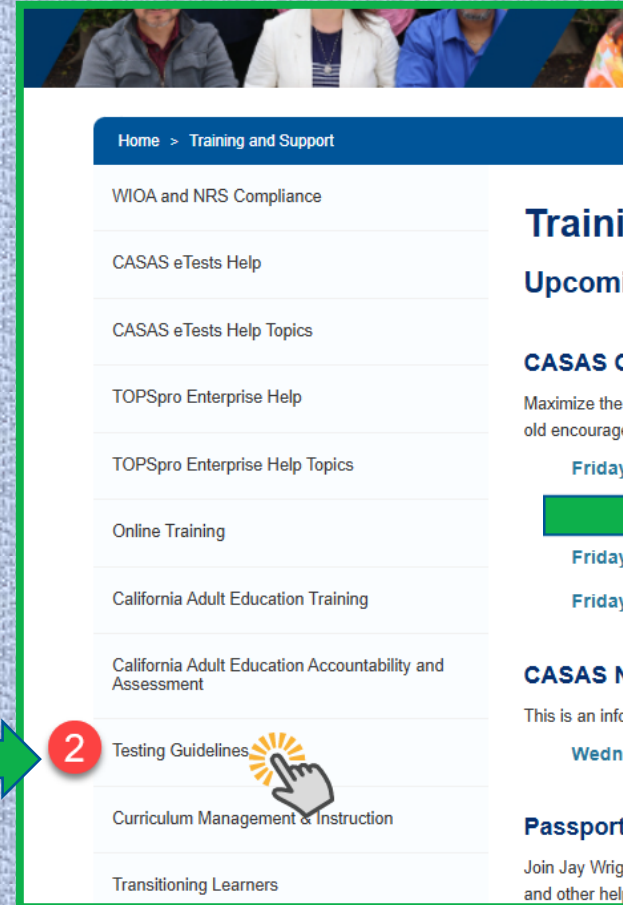
CASAS is grateful to our wonderful publisher partners and their efforts to align curriculum to CASAS competencies and national college and career readiness standards. The CASAS Summer Institute attendees also benefit from their generous support!

For more information about partner materials and how they might support your programs, click on their website links below.

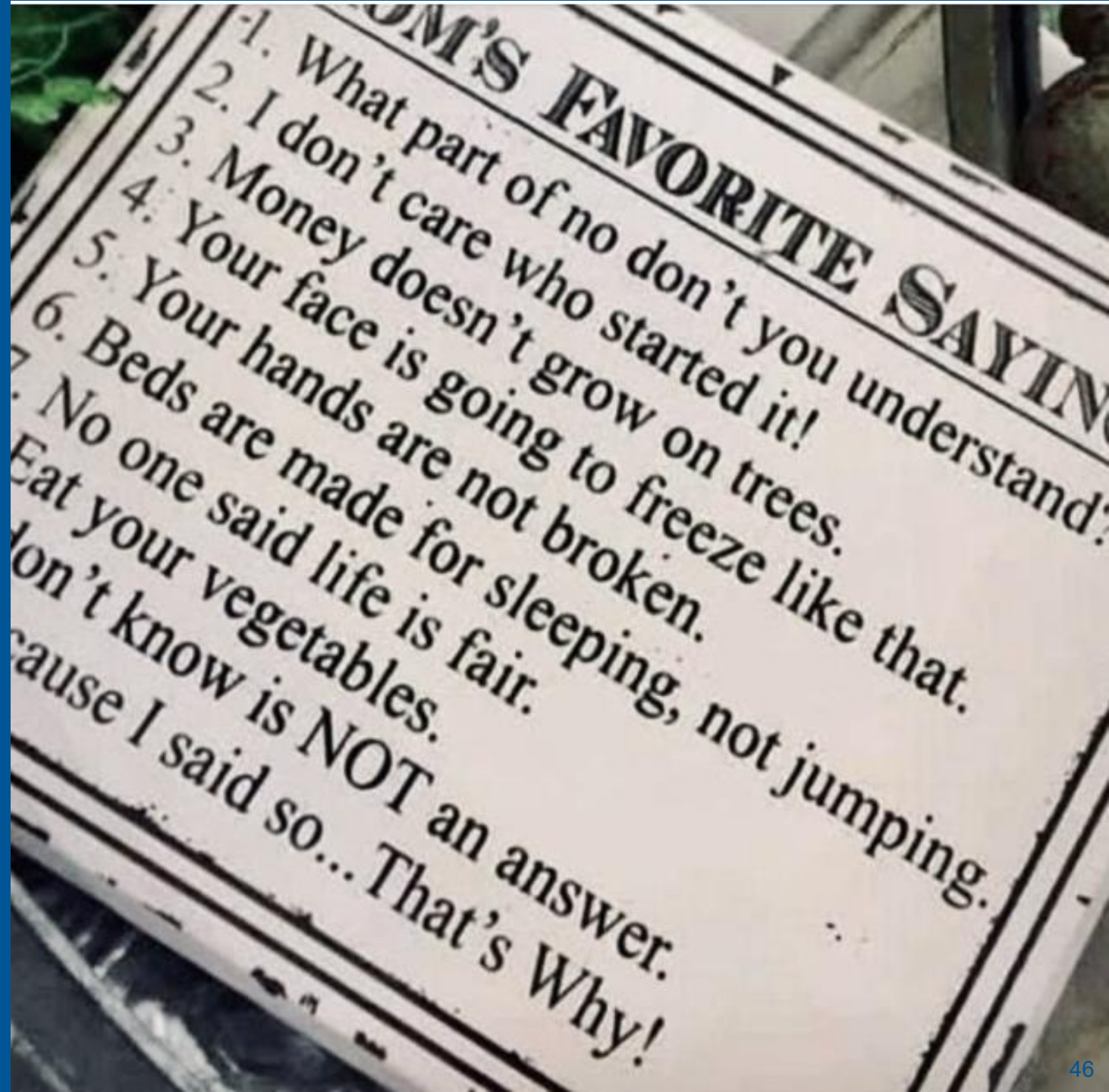
May 13, 2026

44

Where is information on testing accommodations?



Type in the Chat your Favorite Mom Advice



Upcoming Events



JOIN US – Registration Open !



CASAS National Summer Institute **2026**

June 15-18

**Hyatt Regency
Orange County
California**

[To learn more, visit
our website!](#)



Incredible CASAS Office Hours

Fridays, 11 am Pacific

May 22

June 5

Go confront the
problem...
if anything
goes wrong,
use your super
powers!



Register: <https://www.casas.org/training-and-support>

Next CASAS News and Updates Webinar!



Wednesday, August 19, 2026
11 am Pacific/2 pm Eastern

Reserve a Seat

Thank you from your CASAS Friends!

