



Comprehensive Adult Student Assessment Systems

# National News and Updates

August 17, 2022

# Welcome to the August 2022 CASAS National Webinar!

- Your **phones and computers are muted.**
- Presentation questions? **USE Q & A**
- Technical Difficulties? **USE CHAT**
- **Webinar recording & PPT** posted on the website:  
<https://www.casas.org/social-media-newsroom/webinars>

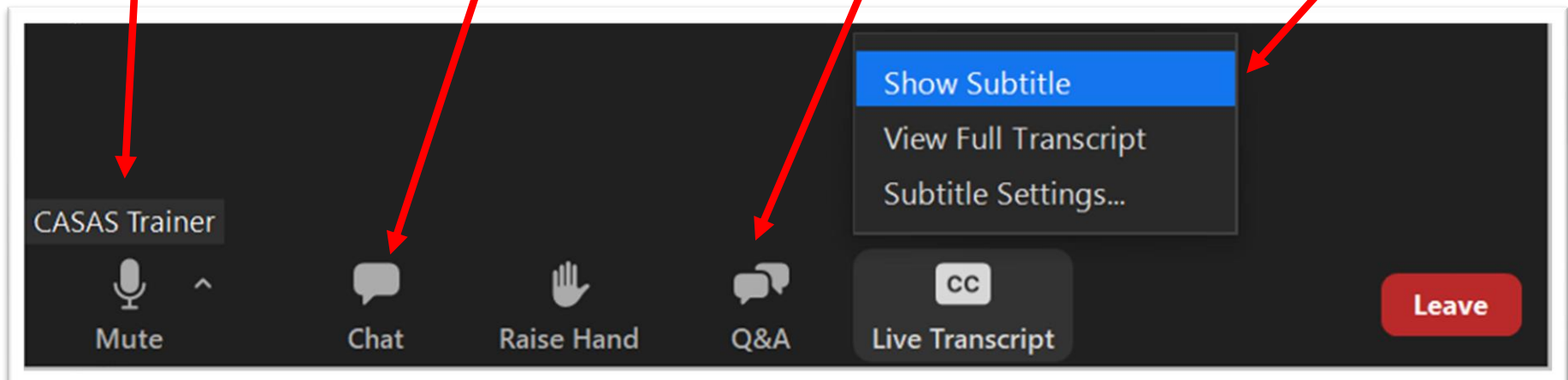
# Before we start: Webinar Tips

Check your audio settings

Use chat only for webinar technical issues. Select all panelists for support

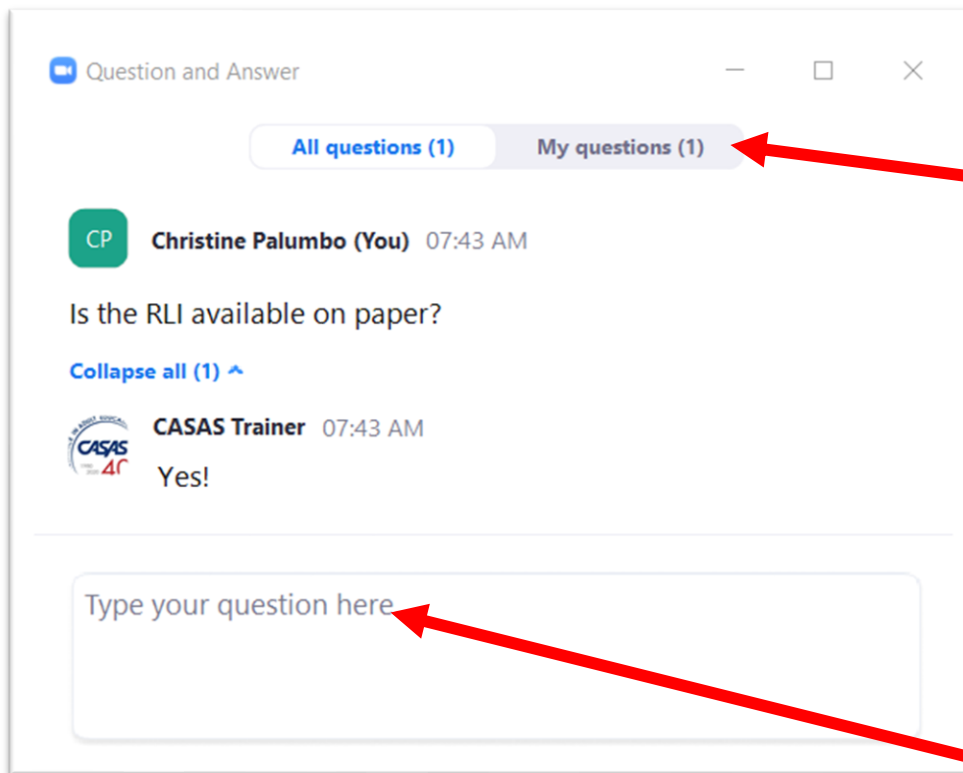
Q & A is used for questions about the presentations and specific questions for the presenter(s)

Enable Closed Captions

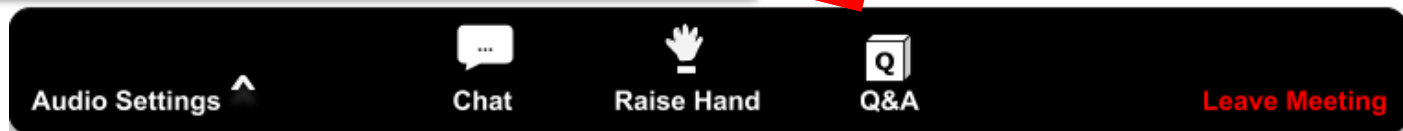


# “Q&A”: Questions for the Presenter

- Type questions directly related to the presentation



Click to see  
your Qs & As  
or all Qs & As



# Webinar Topics

- Test Development Update
- Field Testing and Research Studies
- CASAS Intake Process
- CASAS eTests and TOPSpro Update – Tips and Tricks
- Take a Test Update
- CASAS News



# Test Development Update

Linda Taylor

CASAS VP, Assessment Development

# NRS Status of Current & Next Test Series

Assessment	NRS Approval
<b>FOR ABE</b>	
Reading GOALS for ABE/ASE	Through 2025
Math GOALS	Through 2023
New Math Series	Final Forms Studies
<b>FOR ESL</b>	
Life and Work Reading – 80 series Beginning Literacy – Forms 27 and 28 Reading for Language Arts – Forms 513 and 514	Through February 2023
Life and Work Listening – 980 series	Through February 2023
New ESL Reading	Final Forms Studies
New ESL Listening	Final Forms Studies

# Research Studies

Karen Burger

National Program Specialist

Assessment Research Coordinator



# Research Update – Making Progress

---

Since January 2020

---

Three modalities – Math and  
ESL Reading & Listening

---

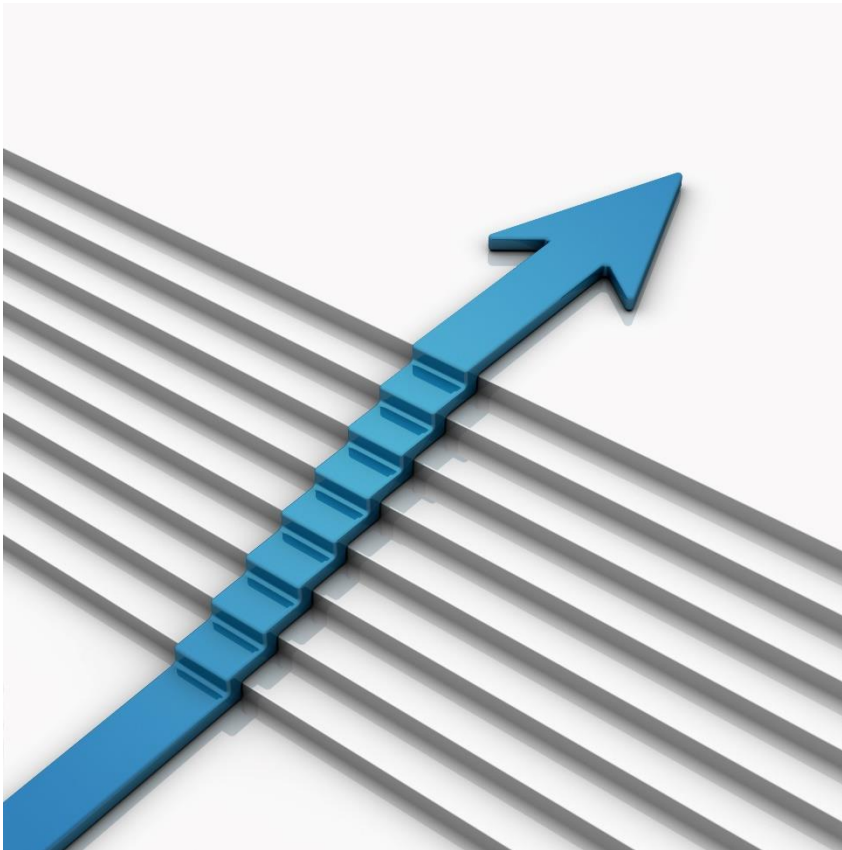
Nearly 17K field tests

---

28 States

---

166+ Agencies



# Why CASAS Field Tests

---

To give programs opportunities to participate in development of new assessments

---

To provide relevant tests built for our students

---

To collect data for a broad demographic of adult learners

---

To continually update and improve our assessments

---

To create assessments for reporting purposes as required by the Office of Career and Technical Adult Education (OCTAE)

# Why would I want to field test?



## **CASAS will provide support along the way**

- Clear instructions and supporting documents
- Technical support for eTests
- Ship paper materials, directions & easy return
- Gift cards for students
- Help with testing options

# Benefits of Field Testing

## For Students

- Provides practice in the testing environment.
- Students gain confidence test-taking experience.
- Reduces anxiety for students.

## For Agencies and Teachers

- Can be included as instructional time.
- Teachers can preview the new tests.
- Teachers can use the opportunity to coach students as they prepare for post-tests.

# New - ABE Reading GOALS NRS Level 1

## URGENT NEED!

- **When?** Now through October/November
- **Who?** ABE Learners
  - Students with a Reading GOALS scale score of 203 or below
  - Native speakers who are in Literacy programs or deemed too low to test in reading
- **Delivery?** eTests and paper/pencil (on site and remote)
- **Methodology?** Up to 4 tests – no locator
- **Student gift cards: \$20 per test**
- Complimentary web-test units

# ABE Math GOALS Level A Field Testing

## URGENT NEED!

- **When?** Now until goals are met
- **Who?** ABE Learners
  - Students with a Math GOALS scale score of 200 or below
- **Delivery?** eTests and paper/pencil (on site and remote)
- **Methodology?** One or two level tests
- **Student gift cards: \$20 per test**
- Complimentary web-test units

# Paper Testers & Learning Gains Studies

## Learning Gains Studies

- Students take a pre- and post-test
- Needed for Math and ESL (Reading & Listening)
- Paper/Pencil or eTests

## Paper / Pencil Field Testing

- Math – All levels
- NRS Level 1 ABE Reading

# How do I get started?

- Communicate with teachers/administrators in program
- Create a plan for implementation
- Contact CASAS for support along the way!

*For more information visit our field testing webpage or contact:*

- Karen Burger
  - [Fieldtesting@casas.org](mailto:Fieldtesting@casas.org)



## What's New

- [Field Testing Opportunities](#)
- [Getting started with CASAS e-Tests](#)
- [Remote Testing](#)
- [Office Hours Registration](#)
- [News and Updates Webinars](#)
- [Live Facilitated Training Registration](#)
- [EL Civics Support Channel](#)
- [Citizenship Preparation Support](#)
- [EL Civics Exchange](#)

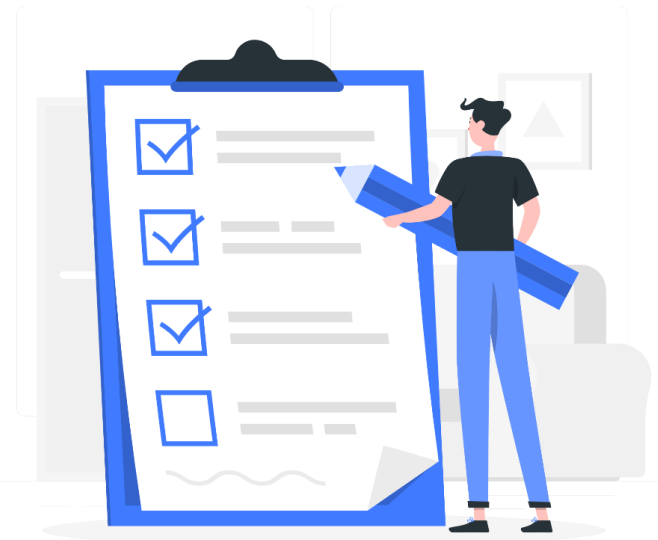


# Three QUICK questions...

Janice Fera,  
National Program and Technology Specialist

# Will you share feedback with us?

- Zoom Polls:
  - How long YOU have been in Adult Education
  - Plans for onboarding new staff
  - Your agency's expertise with the CASAS software

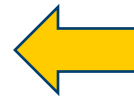


# Polls

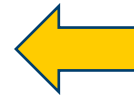
The screenshot shows a web browser window titled 'Polls'. The main content area has a green header with the text 'ADDIE'. Below the header is a question: '1. Which does 'ADDIE' stand for?'. There are four radio button options listed below the question:

- Analyse, Develop, Design, Implement, Evaluate
- Analyse, Design, Develop, Implement, Evaluate
- Analyse, Design, Develop, Interpret, Evaluate
- Analyse, Develop, Design, Interpret, Evaluate

At the bottom of the form is a blue 'Submit' button.



3 Close the poll



1 Answer the poll



2 Submit the poll

# CASAS Intake Process

Margaret Kirkpatrick, NEDP Director

Portia La Ferla, CASAS Program Specialist

# CASAS eTests and TOPSpro Update

Martha Perez

CASAS Technology Support Team Member and Trainer

# Take a Test Update

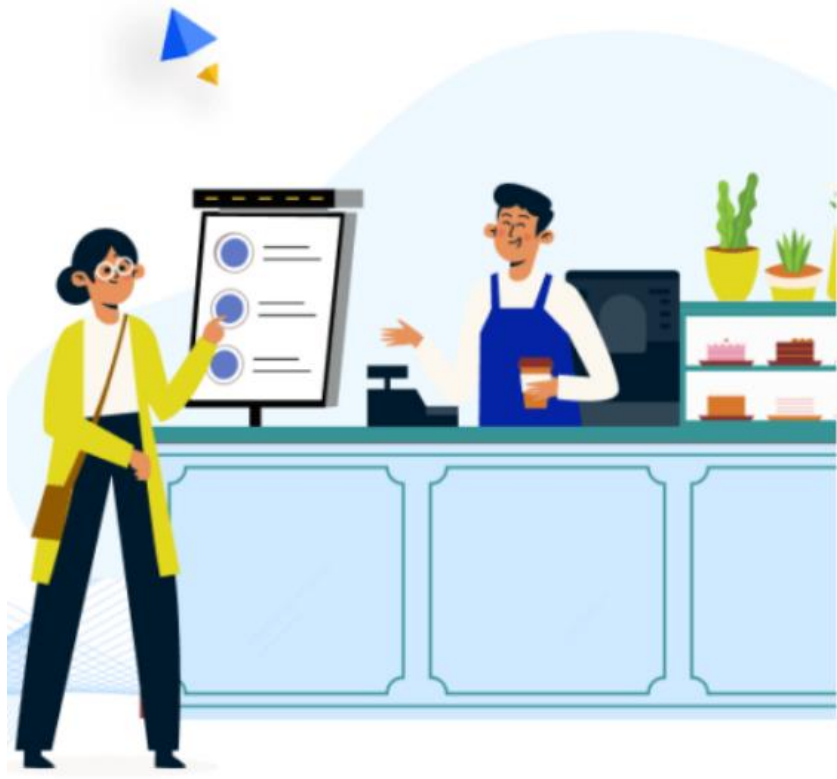
Richard Ackermann, TOPSpro and eTests  
Program Manager

# Take a Test

- What is it?
- What does it do?
- What is a secure browser?
- What is kiosk mode?

[Take a Test Documentation](#)

# Kiosk Mode



Chromebook

iPad

Windows 10

Windows 11





## Open Take a Test?

https://webtestsqa.org wants to open this application.

- Always allow webtestsqa.org to open links of this type in the associated app

Open Take a Test

Cancel

The image shows a screenshot of the eTests CASAS Station Management registration interface. At the top center is the eTests CASAS logo. Below it is the title "Station Management". There are two radio button options: "Register station with code" (which is selected) and "Register station with credentials". Below these options is a rounded rectangular form containing a label "Station Registration Code:", a text input field with the value "3302427", and a blue "Register" button.

**eTests®**  
CASAS

### Station Management

Register station with code     Register station with credentials

Station Registration Code:

**Register**


# Take a Test

- When is it available?
- How do I get it?
- Do I download it?
- What about Macintosh?

# CASAS News

# Upcoming Live Training

## What's New

- [eTests Test Security: Take a Test](#)
  - [Field Testing Opportunities](#)
  - [Getting started with CASAS eTests](#)
  - [Remote Testing](#)
  - [Office Hours Registration](#)
  - [News and Updates Webinars](#)
  - [Live Facilitated Training Registration](#)
- 

- Overview: TOPSpro Enterprise (TE)
  - **Thursday, August 25**
  - 11:00 am to 12:30 pm Pacific
- Implementation
  - Module 4: Instructional Implementation
    - **Thursday, September 29**
    - 9 am – 10:30 am Pacific
- To register, click link on CASAS.ORG

# Next National TE Network Meeting

- **Friday, September 9**, 9 am – 10:30 am Pacific
- Meeting info will be posted in “What’s New” on CASAS website.
- To check the schedule and get registered, visit <https://www.casas.org/training-and-support/casas-live-facilitated-training>



# Help Documentation & Videos

## CASAS Homepage

### What's New

- [eTests Test Security: Take a Test](#)
- [Field Testing Opportunities](#)
- [Getting started with CASAS eTests](#)
- [Remote Testing](#)
- [Office Hours Registration](#)
- [News and Updates Webinars](#)
- [Live Facilitated Training Registration](#)
- [FAQs](#)
- [Help Documentation & Videos](#)



## Training Homepage

Just getting started with CASAS eTests?

- See the [Going Live! Checklist](#) for more information.



### Help Documentation & Videos

- Access an index of helpful training materials, [click here](#).

 Training Announcements

### Modules

#### ▼ CASAS eTests Implementation

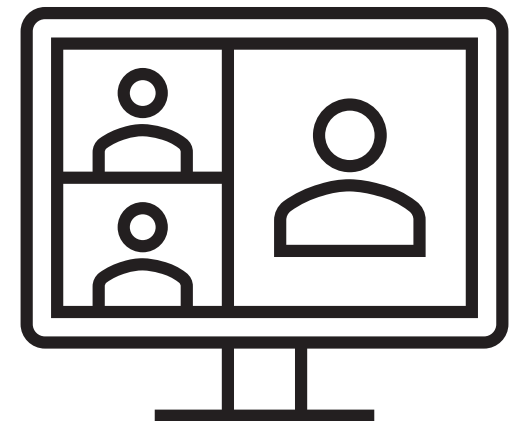
 Module 1: CASAS Implementation Basics

 Module 2: CASAS eTests Implementation



# Office Hours with CASAS Staff

- **Fridays** at 11 am Pacific/2 pm Eastern
  - **August 26**
  - **September 16**
  - **September 30**
- Join us for one-to-one support
- Attendees drive the session with their questions
- Register:  
<https://www.casas.org/training-and-support/casas-live-office-hours>



# Next Monthly News & Updates Webinar

## What's New

- [eTests Test Security: Take a Test](#)
- [Field Testing Opportunities](#)
- [Getting started with CASAS eTests](#)
- [Remote Testing](#)
- [Office Hours Registration](#)
- [News and Updates Webinars](#)
- [Live Facilitated Training Registration](#)
- [FAQs](#)
- [Help Documentation & Videos](#)

- **Wednesday, October 19**
- **11 am Pacific/2 pm Eastern**
- [Click](#) to register today!



# Thank you for attending!

**Recording of this webinar and the PPT** will all be posted in the What's New/News and Update Webinars section on the CASAS website.

- General CASAS Information, [casas@casas.org](mailto:casas@casas.org)
  - Ask any question - including what materials to order
- Order Department – [orders@casas.org](mailto:orders@casas.org)
  - to place an order or check the status of an order
- Tech Support – [techsupport@casas.org](mailto:techsupport@casas.org)
- Training – [training@casas.org](mailto:training@casas.org)
- eTests Implementation – [golive@casas.org](mailto:golive@casas.org)
- Remote Testing – [remotetesting@casas.org](mailto:remotetesting@casas.org)