

CASAS National News and Updates Webinar

December 11, 2024



Welcome to the December 2024 CASAS National Webinar

- Presentation questions?
USE Q & A
- Technical Difficulties?
USE CHAT
- **PowerPoint** is posted on the
[Webinar Webpage](#)
- Webinar **recording** will be
posted by December 18



Message from the President

Jane Equez
CASAS President



Let **CASAS** Be Your Co^{mpass}!





We Wish You a Merry CASASmas!





Agenda

- Test Development and Research Updates
- Promising Practice: National External Diploma Program (NEDP)
- TOPSpro Enterprise Updates
- Training Updates
- Important Reminders

Let **CASAS** Be Your  mpass!

Assessment Update

All I Want from CASAS is to Not Retest

Daniel Esko

Assessment Development
Program Manager





Reading

GOALS 2
CASAS®

**Submit for
NRS Approval**



Support Materials

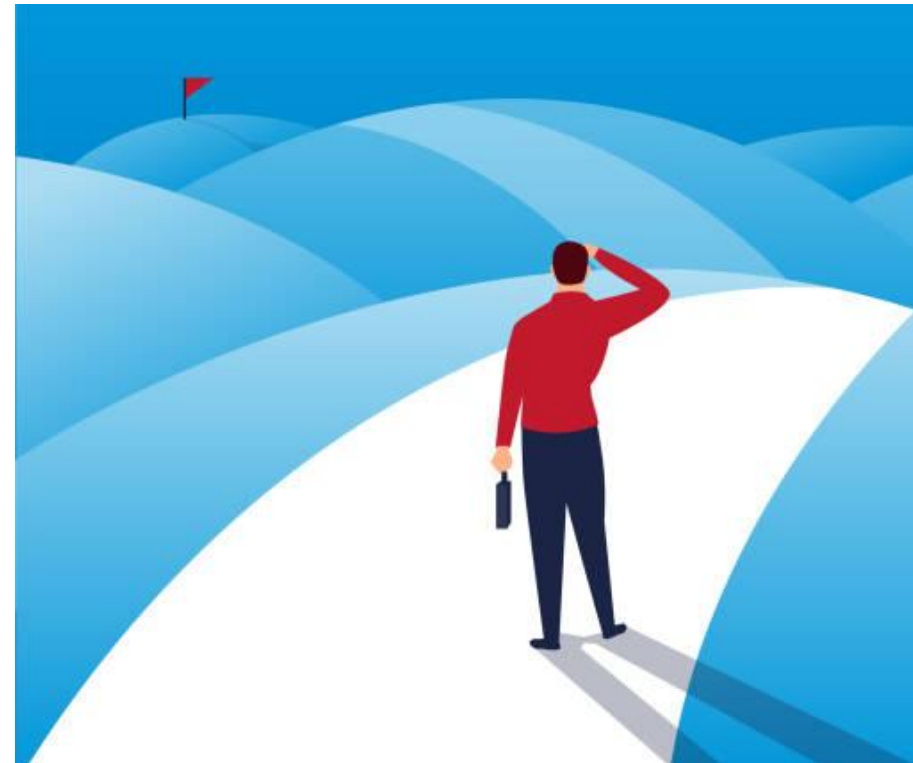


We need your help!

Field Testing

 **Reading CAT**
(Computer Adaptive Test)

 **New Listening Items**





Level A Inaccurate Scores (*)

- **Reading GOALS**
- **Math GOALS 2**
- **Reading STEPS**
- **Listening STEPS**



Level A Inaccurate Scores

Students with low levels of literacy

- **Need to place students into NRS Level 1**
- **Need to assign scale score for reporting**

Reading STEPS Level A, Form 621

Next Assigned Tests – Level A, Form 621R

**Inaccurate
Score (*)**

Student Raw Score	Student Scale Score	NRS Level	Next Assigned Test
0	*		
1	*		
2	*		
3	*		
4	160	1	Level A Form 622R
5	162		
6	165		
7	167		
8	169		
9	171		
10	172		
11	174		
--	---		

Updated Reading STEPS Level A, Form 621

Next Assigned Tests – Level A, Form 621R

**Inaccurate
Score (*)**

Student Raw Score	Student Scale Score	NRS Level	Next Assigned Test
0	160	1	Level A Form 622R
1	160		
2	160		
3	160		
4	160	1	Level A Form 622R
5	162		
6	165		
7	167		
8	169		
9	171		
10	172		
11	174		

OCTAE! OCTAE! OCTAE!
Adds FLEX-I-BIL-I-TY



What winter activity best describes how you feel about using alternative assessments?

- ☐ **No thanks. I'll just sit here inside and drink my hot cocoa.**
- ☐ **Polar bear plunge. I'm ready to jump in with both feet!**
- ☐ **Ice fishing. I want to try it, so I'll put a little line in and see what bites.**

Promising Practice: I'm Dreaming of an Alternative Diploma Option



Margaret Kirkpatrick, NEDP
Director

Janita McNemar, NEDP
National Training Specialist

Trudy Rice and Roz Rowan,
College of Southern Maryland



NEDP: The National External Diploma Program

An Alternative High School Completion Option



National External Diploma Program (NEDP)

- Competency-based, applied performance assessment
- Series of simulations that parallel job and life situations
- Recognized as Innovative Practice and Innovator for Digital Literacy



Reginald from
Academy of Hope, DC

Key Characteristics of NEDP

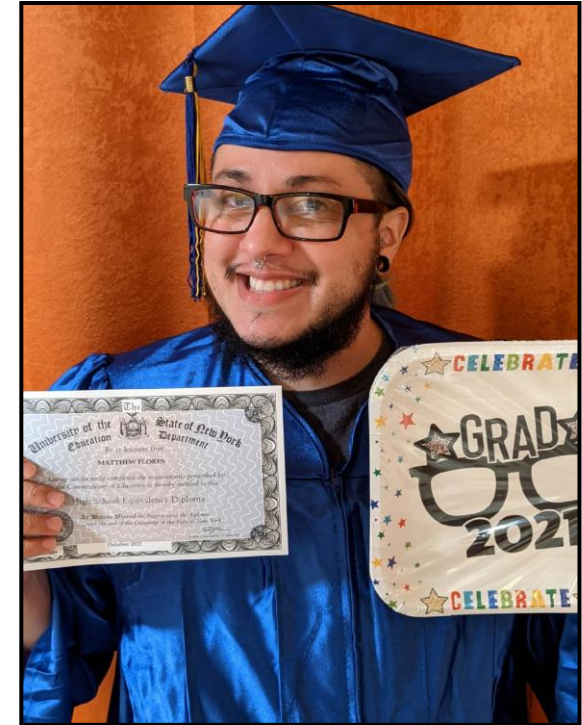
- Self-paced and flexible
- Learner self-efficacy and active engagement
- Appropriate for second language speakers and those who learn differently
- High intermediate level score on CASAS reading, math, and writing instruments.



Miran from Fairfax, VA

NEDP Client Outcomes

- Acquire skills needed to demonstrate mastery of competencies
- Are evaluated against a criterion of mastery instead of comparison to others
- Have the flexibility to work and/or obtain workforce training (IET - Integrated Education and Training)



Matt from NY Hub

College of Southern Maryland



COLLEGE *of*
**SOUTHERN
MARYLAND**

Our typical NEDP client...

doesn't do well with timed tests and
may have test anxiety

has been away from the classroom
environment for a number of years
and prefers self- learning

is an older client with life
experience/skills

may be balancing home and work
schedules

often does not have time in their
schedule to attend a class

is mature and self-motivated

College of Southern Maryland

Adult learners who select NEDP prefer a high school diploma program that

- Is self-paced, with no time limit
- Gives flexibility to busy adults
- Prepares learners for their next steps
- Includes a diverse set of learners
- Measures skills in real-world contexts



COLLEGE *of*
**SOUTHERN
MARYLAND**



CSM Graduate Meryem with CSM President Dr. Yolanda Wilson and Vice President for Continuing Edu and Workforce Development Ellen Flowers-Fields.

College of Southern Maryland's NEDP Statistics

68%
Female

57%
Age 25 - 44

63%
Employed

43%
Graduation Rate

66%
Retention Rate

58
Active Clients



COLLEGE *of*
**SOUTHERN
MARYLAND**

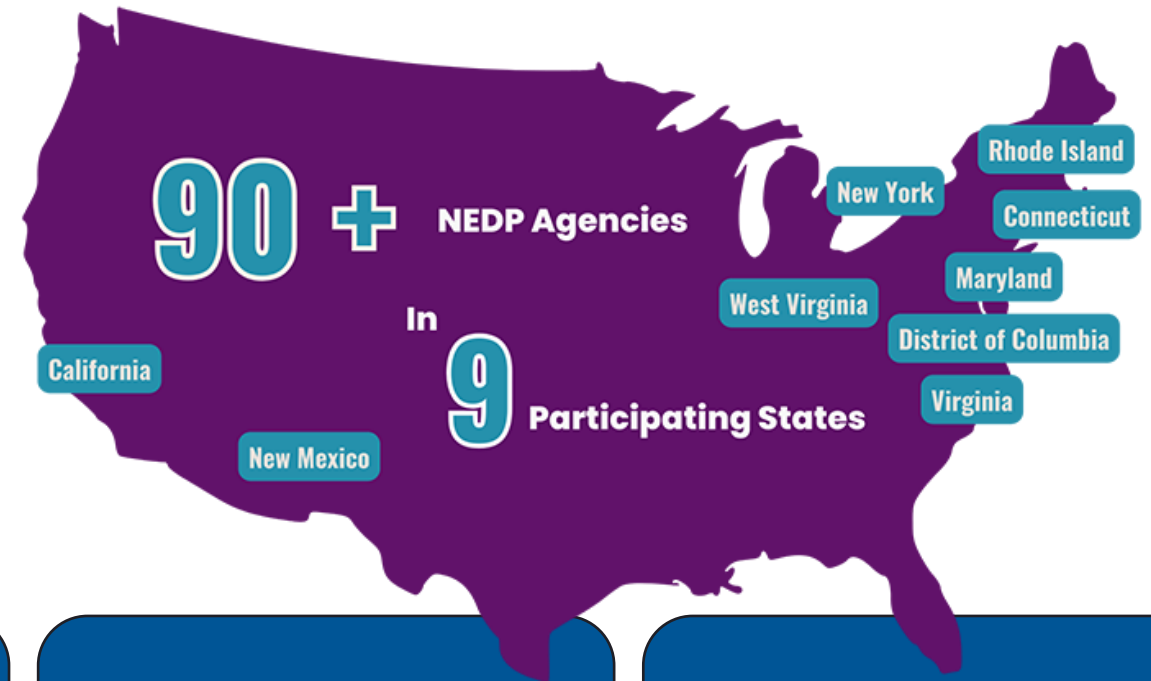
The NEDP Hub

- In the beginning: New York looks at equity of access
- Local, regional, or state Hub
- Available to all qualifying adult learners without a local provider
- Staffed by experienced NEDP Advisor/Assessors
- Delivered via contract with CASAS/NEDP
- All proctored work is completed remotely



Want to Know More?

- Go to www.nedp.org and click **Prospective Providers** for the *NEDP Information Kit*
- Contact us to
 - schedule an information session
 - ask questions
 - connect with other providers



Trudy Rice
tlrice@csmd.edu
Roz Rowan
rdrowan@csmd.edu

Janita McNemar
NEDP National Trainer
jmcnemar@casas.org

Margaret Kirkpatrick
NEDP Director
mkirkpatrick@casas.org

NEDP Inbox
nedp@casas.org

CASAS eTests / TE Updates

**What a bright time, it's
the right time,
to proctor the right way**

Elizabeth Scheib

National Program and
Onboarding Specialist



Proctor Resources: Testing Session Activity Page



Session activity

Session full name: ABE/ASE (Intake: Pretest w/ Locator) [Manage](#)

Site: Site 1 Supervise end: 11.26.2024 / 14:51

Supervisor: CASAS Elizabeth Scheib Session Start: 07.01.2024 / 00:00

Status: Active Session End: 07.01.2025 / 00:00

Session Type: On-site Session

Station Registration Code: 3059681

[Show configuration](#) [Refresh](#)

Station Full Name	Student Name	Status	Test Form	Test Start	Time Left	Questions	Last Activity	Class ID
filter	filter	filter	filter	filter	filter	filter	filter	filter
Remove TS151287004156 (On-Site) Intervene	ESCHEIB - elizabeth scheib	Logged In	903R	11/26/2024, 10:55	01:06:55	37	11/26/2024, 11:07	

[+ Add stations](#) 1 station listed ☒ Show all stations ☐ Show only used stations ☐ Show only not used stations



Proctor Resources: Assessment Information Online

The screenshot shows the CASAS homepage with the URL casas.org in the browser. The navigation bar includes links for Home, Product Overviews, Training and Support, Education Providers, Workforce Development, Business and Industry, and Social Media Newsroom. A search bar and links for Login, Create Account, About, Contact Us, and an Order button are also present. The main banner features a photo of people working together and the text "Product Overviews. Get on-target results with CASAS assessments and resources. Our products are time saving, easy to use, and cost effective." Below the banner, there are three columns of content. The first column, "Welcome to CASAS", contains buttons for CASAS CATALOG, SUMMER INSTITUTE, ONLINE TRAINING (highlighted with a red arrow), CALIFORNIA ADULT EDUCATION Professional Development, NEDP National External Diploma Program, and CASAS eWORKs. The second column, "Voices from the Field", includes a video player titled "CASAS - Comprehe...". The third column, "What's New", lists available resources like Teacher Portal, Reading STEPS, Listening STEPS, and Math GOALS 2, as well as ongoing resources like Accommodations and Accessibility, Field Testing Opportunities, Getting started - CASAS eTests, TOPSpro Enterprise Help, and FAQs. At the bottom, there are sections for "CASAS Peer Communities" and "Watch our latest News & Updates Webinar".

NEDP - National External Diploma Program

Reading Level Indicator (RLI)

Secondary Level Assessment

Spanish Assessment

Special Needs

Visual Impairment/Blindness

Work Readiness Checklists and Worksite Performance Ratings

Workplace Speaking

Reading STEPS Grade Level Equivalents

PDF115.07 KBDownload

Sample Test Items

View the sample test items to familiarize yourself and your students with the format and content of this reading test series.

File	Type	Size	Download
Reading STEPS Sample Items by NRS Level	PDF	2.68 MB	Download
Reading STEPS Sample Items by Test Form Level	ZIP	3.74 MB	Download
Reading STEPS Sample Items Scripts for Visually Impaired and Blind	PDF	493.18 KB	Download

Test Specifics

Reading STEPS assessments correlate to [CASAS Competencies](#) and to the [English Language Proficiency Standards \(ELPS\) for Adult Education](#). Use student test results to help target instruction.

CASAS Level	Form Number	Number of Test Items	Test Time*	Scale score ranges
Appraisal	619R	28	30 minutes	
Locator	620R	14	15 minutes	
A	Forms 621R - 622R	33	30 minutes	160 - 196
B	Forms 623R - 624R	36	50 minutes	184 - 206
C	Forms 625R - 626R	36	75 minutes	197 - 216
D	Forms 627R - 628R	36	75 minutes	207 - 227
E	Forms 629R - 630R	36	75 minutes	217 - 251

*Students must be allowed up to the time listed to complete the test, but most students will finish the test in less time. Students may be given additional time as an accommodation under certain circumstances.

Resources

Use the [QuickSearch Online](#) database to determine instructional resources by assessment series, skill area, program type, CASAS competency, publication title, and by publisher.

CASAS offers self-paced [CASAS Implementation Training](#) at no cost. If you have not yet completed CASAS Implementation Training, you'll need to do so prior to ordering the Reading STEPS series.

© 2024 by CASAS. All rights reserved.

Privacy Policy

Site Map

Contact Us

Feedback

Follow us on

f

Proctor
Resources:
Assessment
Information Online

December 11, 2024

29



Proctor Resources: Test Results in eTests

* = Inaccurate Score
◆ = Conservative Estimate
Retesting may be needed!

eTestsOnline - Agency 118 26-Nov-24 11:09:29 AM Elizabeth Scheib (escheib@casas.org) Logout

Testing Sessions Testing Session Templates Test Results Students Testing Stations Change Password

Test Results

(1 records) Export to CSV Refresh

> Filter by: Test Date, Current Program Year, Test Is Not Locator

	Student ID ↑↓	Student Name ↑↓	Site ↑↓	Form ↑↓	Score ↑↓	Raw Score ↑↓	Date ↑↓	Proctor ↑↓
<input type="checkbox"/> Save table filters	<input type="text" value="filter"/>	<input type="text" value="filter"/>	<input type="text" value="filter"/> ▼	<input type="text" value="filter"/>	<input type="text" value="filter"/>	<input type="text" value="filter"/>	<input type="text" value="filter"/>	<input type="text" value="filter"/>
View PSR	ESCHEIB	elizabeth scheib	Site 1	903R	222	32	11/26/2024 10:55:40	escheib@casas.org - CASAS Elizabeth Scheib

Proctor Resources: eTests Testing Sessions

eTestsOnline - Agency 118 26-Nov-24 11:23:59 AM Elizabeth Scheib (escheib@casas.org) Logout

Testing Sessions (9 records) Refresh

> Filter by: Status

☒ Save table filters

					Site ↑↓	Lab Name ↑↓	Template Name ↑↓	Session Name ↑↓	Start Date ↑↓	End Date ↑↓	Proctor ↑↓	Status
					filter	filter	filter	filter	filter	filter	filter	filter
Edit	View	Manage	Tests (20)	Delete	Copy	Site 1	ABE/ASE	Intake: Pretest w/ Locator	07/01/2024	07/01/2025	CASAS Elizabeth Scheib	Active
Edit	View	Start	Tests	Delete	Copy	Site 1	ABE/ASE	Progress: Post-test	07/01/2024	07/01/2025		Stopped
Edit	View	Start	Tests	Delete	Copy	Site 1	ABE/ASE	Retest: Scores Outside Accurate Range (Not Same Day)	07/01/2024	07/01/2025		Stopped
Edit	View	Start	Tests	Delete	Copy	Site 1	ABE/ASE	Retest: Scores Outside Accurate Range (Same Day Only)	07/01/2024	07/01/2025		Stopped
Edit	View	Start	Tests (1)	Delete	Copy	Site 1	ESL/ELL	Intake: Pretest - Level A	07/01/2024	07/01/2025		Stopped
Edit	View	Start	Tests (4)	Delete	Copy	Site 1	ESL/ELL	Intake: Pretest - w/Locator	07/01/2024	07/01/2025		Stopped
Edit	View	Start	Tests	Delete	Copy	Site 1	ESL/ELL	Progress: Post-test	07/01/2024	07/01/2025		Stopped
Edit	View	Start	Tests	Delete	Copy	Site 1	ESL/ELL	Retest: Scores Outside Accurate Range (Not Same Day)	07/01/2024	07/01/2025		Stopped
Edit	View	Start	Tests	Delete	Copy	Site 1	ESL/ELL	Retest: Scores Outside Accurate Range (Same Day Only)	07/01/2024	07/01/2025		Stopped



When using the retesting session, be aware that students could complete more than one test if the proctor isn't carefully monitoring!



Proctor the Right Way

- Inform your proctors of these resources to help build best practices!
- Monitor the testing session activity screen at all times during student testing!
- Know how many questions are on a test form to assist students as they finish and escort them out of the testing area.
- Retest students without valid test scores as soon as possible. Retesting for students at Level A without a valid score is no longer necessary.
- Track student test records in eTests and TOPSpro Enterprise to effectively collect accurate, paired test scores

Training Update

O Training Site, O Training Site, How Lovely are Thy Modules

Astrid Robitaille

National Program and
Online Training Specialist



Celebrating classic holiday combinations:



Black-eyed peas and
collard greens

Latkes and
sour cream



Cocoa and
cookies

Introducing another great combination.....

Module 3: Launching Paper Tests with Proctor Certification



Module 3: Launching Paper Tests with Proctor Certification

Welcome to Module 3: Launching Paper Tests with Proctor Certification!
This module will provide an overview of CASAS paper based testing procedures.

Below are several CASAS paper test booklets for different levels and domains:

- Level A CASAS
- Level B CASAS
- Level C CASAS
- Level D CASAS
- Level E CASAS

Progress tracking for the module components:

Component	Progress %	Status
Module 3: Launching Paper Tests with Proctor Certification	0	In Progress
Test Security Agreement	0	In Progress
Certificate of Completion	100	Completed
Resources	0	In Progress

Module 3: Launching Paper Tests with Proctor Certification

CASAS®

Starting and During the Test



We've combined
two classics:
*Module 3: Paper
Test Implementation*
+
Paper Test Proctor
Certification

into one interactive,
multimedia training.



(Ctrl+Alt+P)



Preview of coming attractions:



“It’s the gift that keeps on giving, Clark...” -Cousin Eddie

PRODUCTION **CASAS**
eTests Coordinator
SCENE Certification
DATE **Winter 2025**



Wrap it Up!

*Should Auld
Assessments Be
Forgot and Never
Used Again*

Kristine Kruczek Mains
National Program and
Training Specialist



New Student Video



The CASAS Testing Journey

CASAS



Overview of the CASAS testing process



Includes key words with images



[This Photo by Unknown Author is licensed under CC BY-NC](#)

Spice it up!



Live Teacher Portal Training



February 13, 2025 - 11 am Pacific

[Reserve a seat](#)



eWORKs Wonderland



Live eWORKs Training



December 12 - 9 am or 1 p.m.

[Reserve a seat](#)



Cozy Up at CASAS Office Hours

Save the Dates!

Reserve a seat.

December 13
January 10
January 24
February 7
February 21



Fridays, 11a.m. Pacific / 2p.m. Eastern



Attendees drive these virtual sessions with their questions

“Gift of Time”



**We hope to see you at the next
CASAS News and Updates Webinar!**

Wednesday, February 5, 2024

11 am Pacific/2 pm Eastern

[Reserve a Seat](#)

