

CASAS National News and Updates Webinar

February 5, 2025





Welcome to the February 2025 CASAS National Webinar

- Presentation questions?
USE Q & A
- Technical Difficulties?
USE CHAT
- **PowerPoint** is posted on the
[Webinar Webpage](#)
- Webinar recording will be
posted by February 12

Message from the President

Jane Equez
CASAS President



Let **CASAS** Be Your **Compass!**



Groundhog DAY



Agenda

- Test Development and Research Updates
- Promising Practice: Tennessee
- Remote Testing Updates
- Training Updates
- Important Reminders

Let **CASAS** Be Your  mpass!

CASAS National News and Updates Webinar

February 5, 2025



Assessment Update

Daniel Esko

Assessment Development
Program Manager



ESL Assessments - NRS Approved

Reading	Listening
Reading STEPS Available Now! NRS-approved through 2030	Listening STEPS Available Now! NRS-approved through 2030

Life and Work Reading 80 series & Forms 27/28, 513/514	Life and Work Listening 980 series
---	---

Sunsetting 6/30/2025
CHECK YOUR STATE'S
ASSESSMENT POLICY

ABE/ASE Assessments - NRS Approved

Reading GOALS

NRS-approved through

June 30, 2025

(Sunset period

March- June 2025)

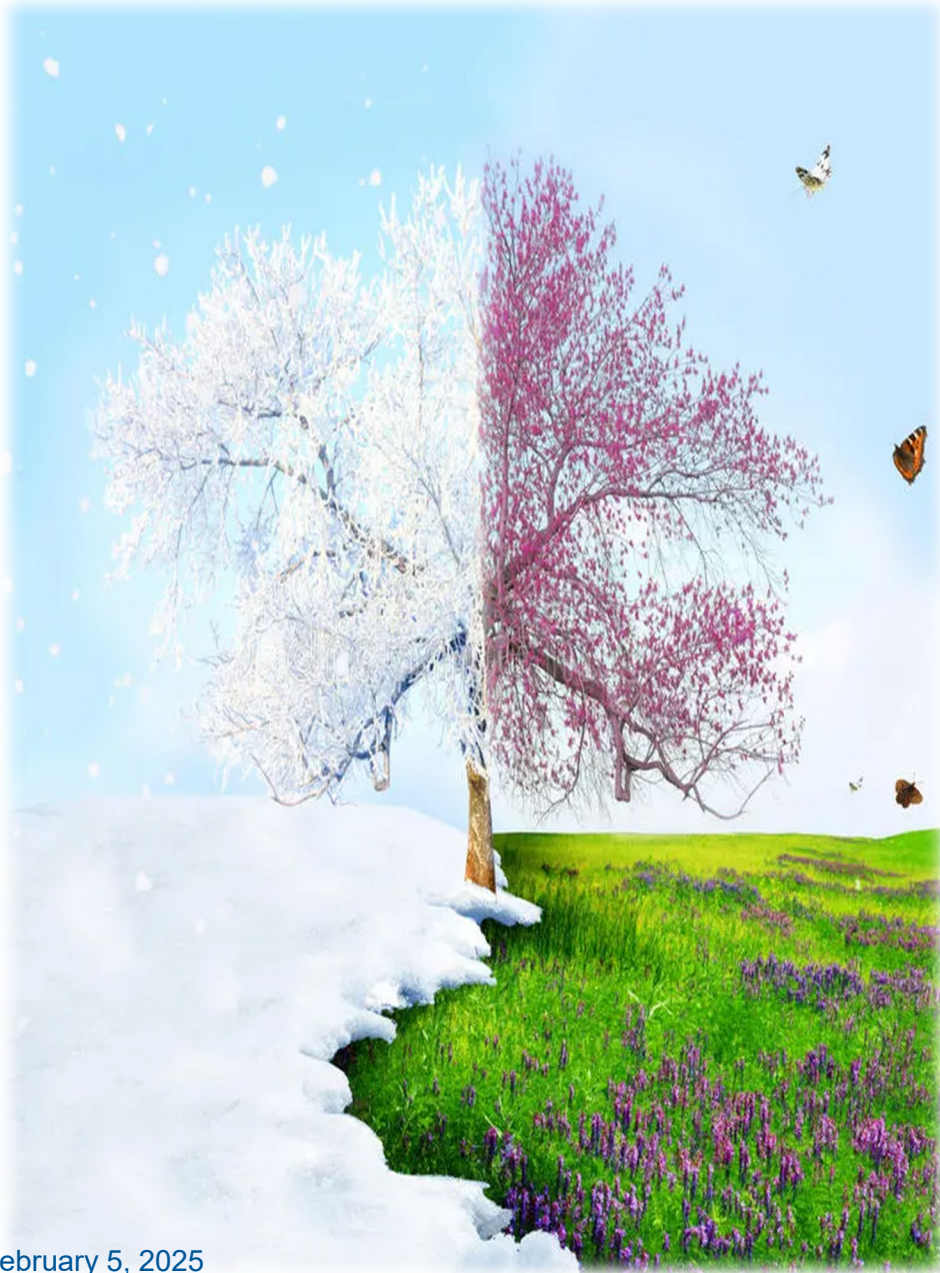


Math GOALS 2

NRS-approved through

2030





Reading

GOALS 2
CASAS®

**Submit for
NRS Approval**



Support Materials





Reading GOALS



Reading GOALS 2

4 Levels
A, B, C, D

Levels 1-6

College and Career
Readiness Standards

CASAS
Competencies

Test Levels

NRS Levels

Proficiency
Standards

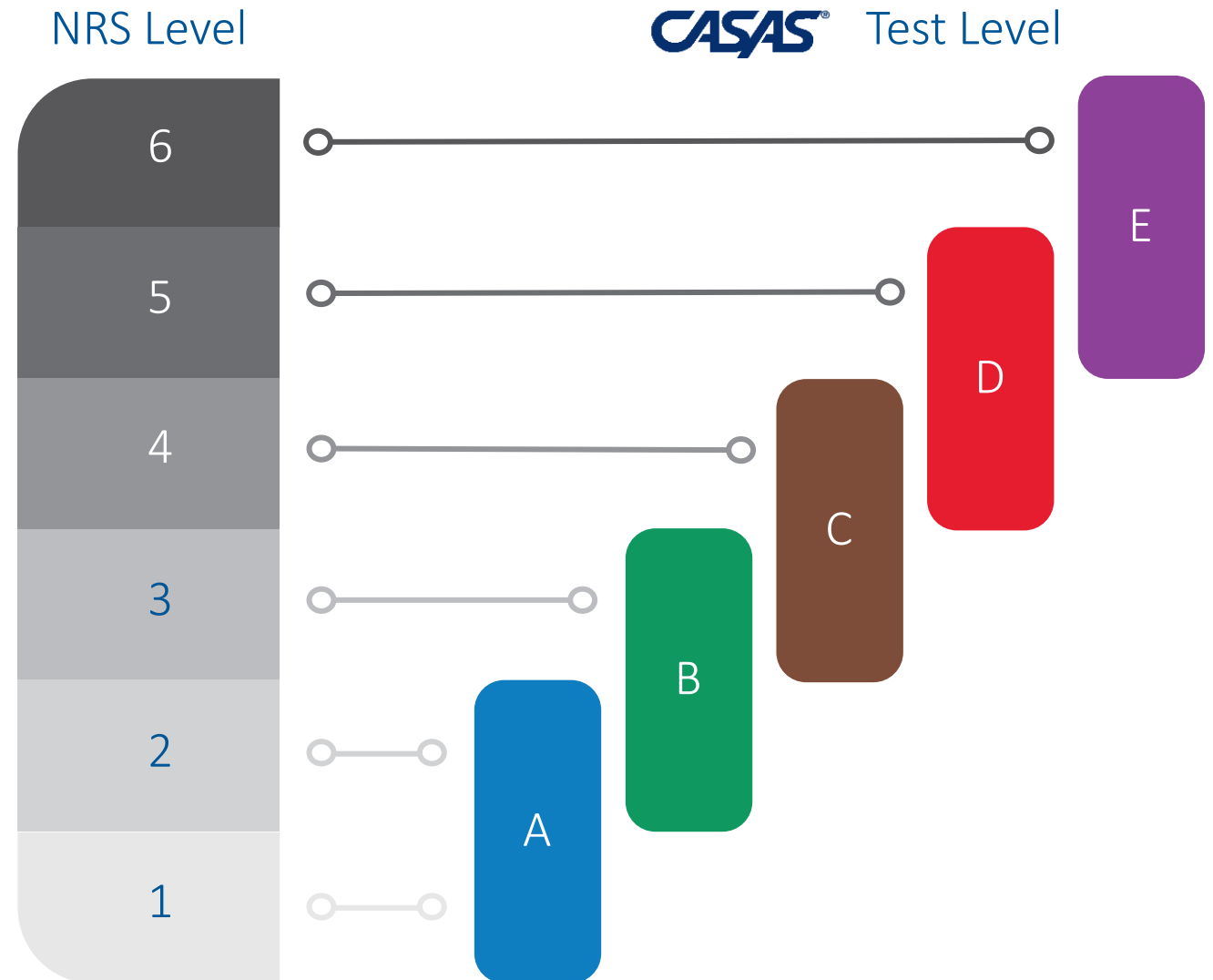
5 Levels
A, B, C, D, E

Levels 1-6

College and Career
Readiness Standards

CASAS Competencies

GOALS 2



Blueprint

Content Area

Level C



NRS Educational Functioning Levels
Levels 3 and 4

College and Career Readiness Standards
Levels C and D

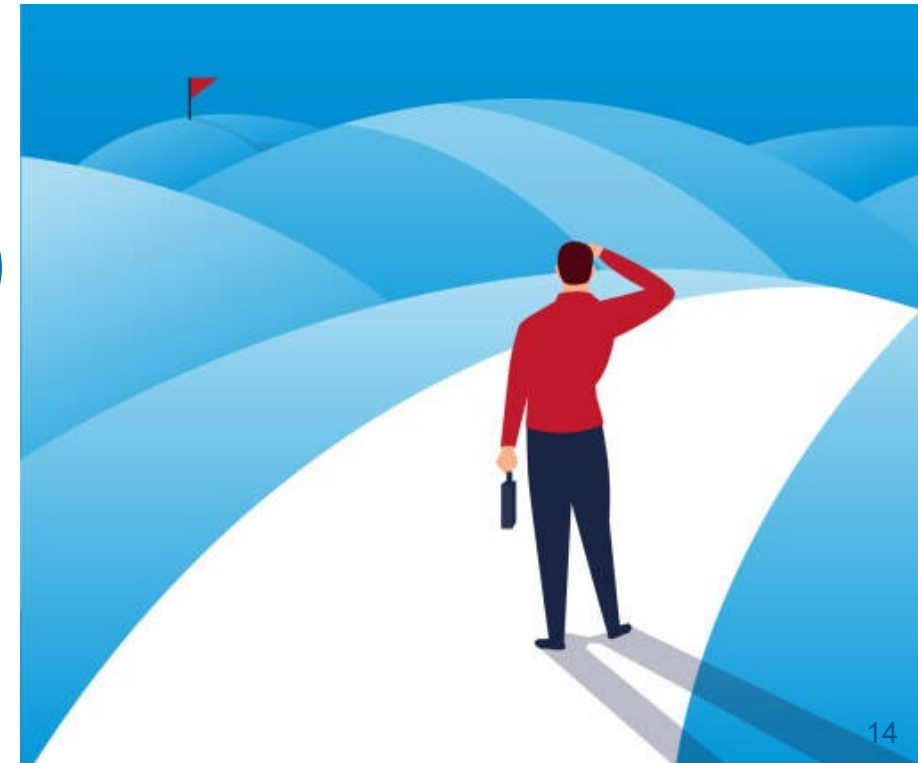
Content Areas	CCR Anchor Standard	% of test items
Vocabulary Understand academic words	4	24%
Details Retell key details Understand text features and structure Compare details between texts	1, 5, 9	33%
Main Idea Identify the main topic Identify an author's purpose Identify an author's point of view	2, 6	32%
Inference Infer/Draw conclusions	1	11%

We need your help!

Field Testing

 **Reading CAT**
(Computer Adaptive Test)

 **New Listening Items**





Spanish Assessment Overview

Karla Galleguillos
National Program Specialist



 **Maria Portillo**



Placement & Progress

Useful for placement tests and **measuring** learning progress before and after instruction.



Application Examples

Used in Spanish literacy programs, **employability programs, and workplace bilingual evaluations.**



Test Versions

Two forms, 653R and 654R, with similar content and difficulty, each with 30 questions.





Test Modality

Online



Test Purpose

Assesses students' understanding of **written** Spanish through multiple-choice questions.



Target Audience

Suitable for students with **3 to 9** years of schooling.



Which Groundhog Day issue are you most concerned about revisiting?



Needing to reinvigorate remote testing for your students



Rolling out a new test series – Reading GOALS 2



Circling back to reclarify existing program goals, objectives, and policies

CASAS National News and Updates Webinar

February 5, 2025



Promising Practice: Sharing Data and Fostering Communication for Program Improvement



Rebecca Hale

Director of ESL Services for the Tennessee
Department of Labor and Workforce Development,
Adult Education Division

Jenni Rouse

Lead Teacher, Integrated English Literacy and Civics
Education Program, Knoxville, Tennessee





Department of
**Labor & Workforce
Development**

19 to 31%

The logo for the Tennessee Department of Education, featuring the letters "TN" in white serif font on a red square background, with a dark blue horizontal bar below it and a registered trademark symbol to the right.

TN

Tennessee Demographics

-
- The map displays the following population data for Tennessee counties:
- | County | Population |
|------------|------------|
| Shelby | 59,495 |
| DeKalb | 2,015 |
| Madison | 5,749 |
| Franklin | 2,355 |
| Wayne | 1,456 |
| Lawrence | 2,874 |
| Giles | 2,055 |
| Lincoln | 2,527 |
| Moore | 416 |
| Bedford | 4,805 |
| Marshall | 2,618 |
| Maury | 4,520 |
| Lewis | 1,168 |
| Perry | 984 |
| Hickman | 2,432 |
| Williamson | 6,992 |
| Cannon | 1,086 |
| Warren | 3,512 |
| Coffee | 3,712 |
| Grund | 1,361 |
| Marion | 2,669 |
| Hamilton | 19,970 |
| Bradley | 7,232 |
| Polk | 1,448 |
| Monroe | 3,291 |
| McMinn | 3,936 |
| Meigs | 1,135 |
| Rhea | 3,205 |
| Bledsoe | 2,414 |
| Squatch | 1,549 |
| Van Buren | 592 |
| Whit | 2,843 |
| Putnam | 4,081 |
| Cumberland | 3,589 |
| White | 2,843 |
| DeKalb | 2,015 |
| Warren | 3,512 |
| Coffee | 3,712 |
| Grund | 1,361 |
| Marion | 2,669 |
| Hamilton | 19,970 |
| Bradley | 7,232 |
| Polk | 1,448 |
| Monroe | 3,291 |
| McMinn | 3,936 |
| Meigs | 1,135 |
| Rhea | 3,205 |
| Bledsoe | 2,414 |
| Squatch | 1,549 |
| Van Buren | 592 |
| Whit | 2,843 |
| Putnam | 4,081 |
| Cumberland | 3,589 |
| White | 2,843 |
| DeKalb | 2,015 |
| Warren | 3,512 |
| Coffee | 3,712 |
| Grund | 1,361 |
| Marion | 2,669 |
| Hamilton | 19,970 |
| Bradley | 7,232 |
| Polk | 1,448 |
| Monroe | 3,291 |
| McMinn | 3,936 |
| Meigs | 1,135 |
| Rhea | 3,205 |
| Bledsoe | 2,414 |
| Squatch | 1,549 |
| Van Buren | 592 |
| Whit | 2,843 |
| Putnam | 4,081 |
| Cumberland | 3,589 |
| White | 2,843 |
| DeKalb | 2,015 |
| Warren | 3,512 |
| Coffee | 3,712 |
| Grund | 1,361 |
| Marion | 2,669 |
| Hamilton | 19,970 |
| Bradley | 7,232 |
| Polk | 1,448 |
| Monroe | 3,291 |
| McMinn | 3,936 |
| Meigs | 1,135 |
| Rhea | 3,205 |
| Bledsoe | 2,414 |
| Squatch | 1,549 |
| Van Buren | 592 |
| Whit | 2,843 |
| Putnam | 4,081 |
| Cumberland | 3,589 |
| White | 2,843 |
| DeKalb | 2,015 |
| Warren | 3,512 |
| Coffee | 3,712 |
| Grund | 1,361 |
| Marion | 2,669 |
| Hamilton | 19,970 |
| Bradley | 7,232 |
| Polk | 1,448 |
| Monroe | 3,291 |
| McMinn | 3,936 |
| Meigs | 1,135 |
| Rhea | 3,205 |
| Bledsoe | 2,414 |
| Squatch | 1,549 |
| Van Buren | 592 |
| Whit | 2,843 |
| Putnam | 4,081 |
| Cumberland | 3,589 |
| White | 2,843 |
| DeKalb | 2,015 |
| Warren | 3,512 |
| Coffee | 3,712 |
| Grund | 1,361 |
| Marion | 2,669 |
| Hamilton | 19,970 |
| Bradley | 7,232 |
| Polk | 1,448 |
| Monroe | 3,291 |
| McMinn | 3,936 |
| Meigs | 1,135 |
| Rhea | 3,205 |
| Bledsoe | 2,414 |
| Squatch | 1,549 |
| Van Buren | 592 |
| Whit | 2,843 |
| Putnam | 4,081 |
| Cumberland | 3,589 |
| White | 2,843 |
| DeKalb | 2,015 |
| Warren | 3,512 |
| Coffee | 3,712 |
| Grund | 1,361 |
| Marion | 2,669 |
| Hamilton | 19,970 |
| Bradley | 7,232 |
| Polk | 1,448 |
| Monroe | 3,291 |
| McMinn | 3,936 |
| Meigs | 1,135 |
| Rhea | 3,205 |
| Bledsoe | 2,414 |
| Squatch | 1,549 |
| Van Buren | 592 |
| Whit | 2,843 |
| Putnam | 4,081 |
| Cumberland | 3,589 |
| White | 2,843 |
| DeKalb | 2,015 |
| Warren | 3,512 |
| Coffee | 3,712 |
| Grund | 1,361 |
| Marion | 2,669 |
| Hamilton | 19,970 |
| Bradley | 7,232 |
| Polk | 1,448 |
| Monroe | 3,291 |
| McMinn | 3,936 |
| Meigs | 1,135 |
| Rhea | 3,205 |
| Bledsoe | 2,414 |
| Squatch | 1,549 |
| Van Buren | 592 |
| Whit | 2,843 |
| Putnam | 4,081 |
| Cumberland | 3,589 |
| White | 2,843 |
| DeKalb | 2,015 |
| Warren | 3,512 |
| Coffee | 3,712 |
| Grund | 1,361 |
| Marion | 2,669 |
| Hamilton | 19,970 |
| Bradley | 7,232 |
| Polk | 1,448 |
| Monroe | 3,291 |
| McMinn | 3,936 |
| Meigs | 1,135 |
| Rhea | 3,205 |
| Bledsoe | 2,414 |
| Squatch | 1,549 |
| Van B | |

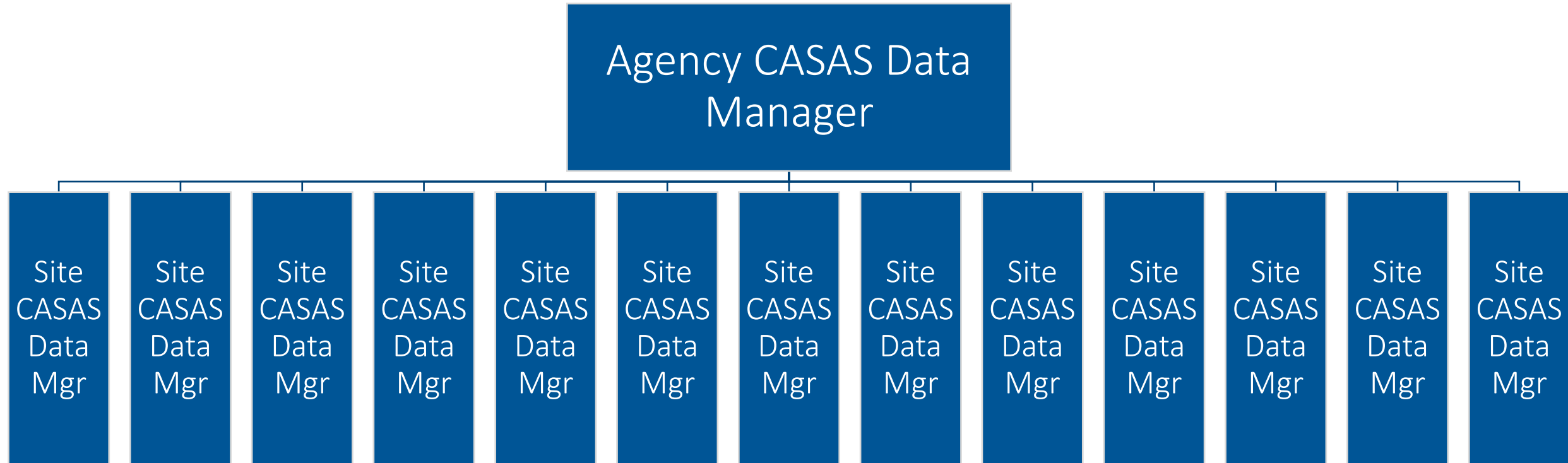


Tennessee's CASAS Structure

Structure

- State-wide purchase
- One CASAS Data Manager for all of Tennessee
 - On boarding new proctors
 - Registering new proctors
 - Rolling out new assessment
 - Going to new sites to help set up CASAS
 - Creating Classes and assigning students to classes

Site CASAS Data Managers





3 Phase Roll Out

Phase 1 - Pilot



- STEPS Pilot
- Site CASAS Data Managers
- East, TN
- Middle, TN
- West, TN

Phase 2- Initial Training

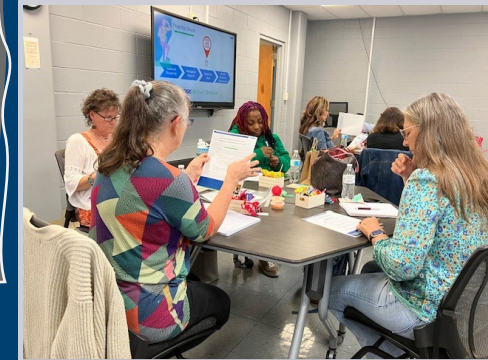


- April STEPS Trainings:
- Overview of STEPS
- Site Data Managers
- Teacher Portal
- STEPS Statewide Rollout: May 1st

Phase 3- Continuous Support



- Monthly Site CASAS Data Managers Town Halls
- July 2024-June 2025
- Statewide Regional Training Tour: Hiking to the Summit



Phase 3: Continuous Support

2. Have you created classes and assigned students to classes in TOPSpro? *

☐ Yes

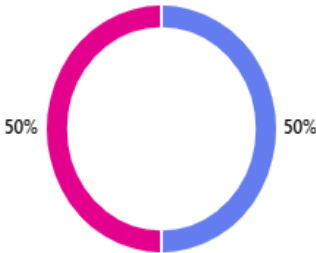
☐ No

2. Have you created classes and assigned students to classes in TOPSpro?

[More details](#)

● Yes 3
● No 3

August

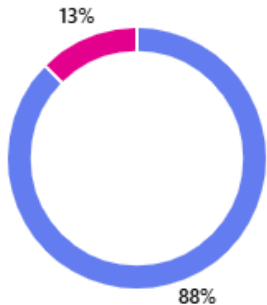


2. Have you created classes and assigned students to classes in TOPSpro?

[More details](#)

● Yes 7
● No 1

November





**Tennessee College of Applied
Technology Knoxville**

Tennessee College of Applied Technology at Knoxville

CASAS STEPS Trainings

- Professional Development
 - Data Manager Toolkit
 - Teacher Portal
 - Best Practices
 - In-person and online

Phase One

CASAS STEPS Pilot

- Networking Opportunity
- Understand New Features

Phase Two

Phase Three

CASAS STEPS Trainings

- Professional Development
 - Statewide tour
 - In-person
 - Small groups

Best Practice Recommendations

- Meet with your team
- Have an action plan
- Communicate the plan
- Collect the qualitative and quantitative data and review them periodically
- Listen



CASAS eTests / TE Updates: Remote Testing

Elizabeth Scheib

National Program and
Onboarding Specialist



What is Remote Testing?



- A type of testing when the proctor and student are not in the same physical location;
- When students take a test on their own devices from their own locations;
- A remote proctor supervises the integrity of the testing process and flags anomalies that could indicate test cheating

A (brief) history of remote testing



Current Status of Remote Testing

140,176 remote tests have been administered by more than 700 programs across 47 states since July 1, 2024



What are some of the benefits of remote testing?



Flexibility



Accessibility



Reduced Stress



Cost-effective



Improved Engagement



Where to start with remote testing?



- Refer to the CASAS website:
<https://www.casas.org/product-overviews/remote-testing>
- Email us at
remotesting@casas.org
- Stay tuned for new changes to the remote testing platform coming this spring!

New Remote Testing Platform in eTests

eTestsOnline - Agency 118

31-Jan-25 1:47:06 PM

Elizabeth Scheib (escheib@casas.org)

Logout

Testing Sessions

Testing Session
Templates

Test Results

Students

Testing Stations

Change Password



Activity

Meeting

☒ Force students to join video meeting

Elizabeth Proctor



Carlos



ayleen



Bere



Kristine



+ Add stations

☒ Enable Tests on all Stations

☐ End Meeting

5 stations listed

☒ Show all
stations

☐ Show only used
stations

☐ Show only not used
stations

Predictions for Spring



- More devices available for remote testing, specifically iPhones, Android devices, and iPads
- Remote testing without Zoom and a new remote testing policy from CASAS
- New remote testing training available later this spring
- New remote proctor training option at CASAS Summer Institute 2025

Stay tuned for more
information on
CASAS remote
testing
this spring!



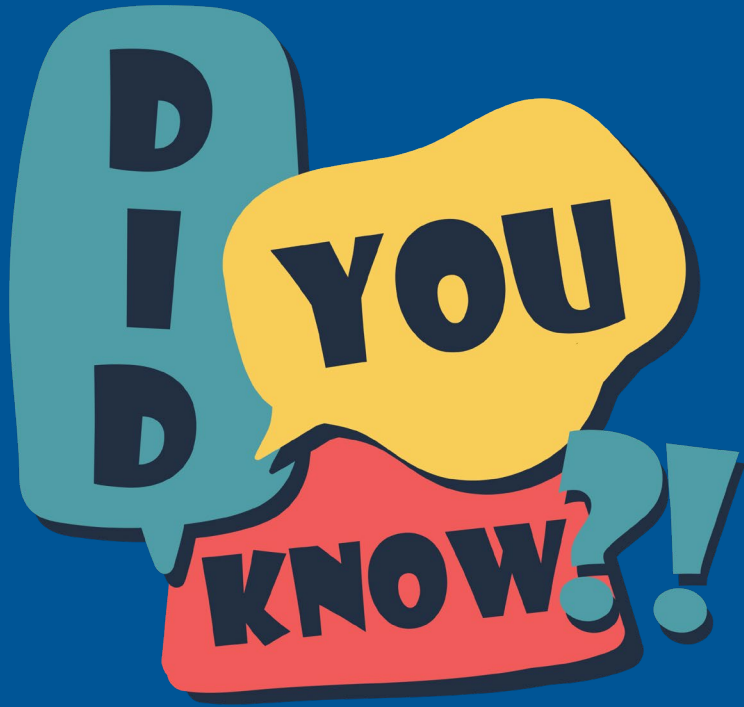
Training Update

Astrid Robitaille

National Program and
Online Training Specialist



How Much Wood Can a Woodchuck Chuck?



Groundhogs are also known as

- **Thick Woods Badgers**
- **Whistlepigs**
- ***Woodchucks***



How Much Wood Can a Woodchuck Chuck?

Quite a lot!

**Total Moodle Trainings
for PY 2023-2024:**



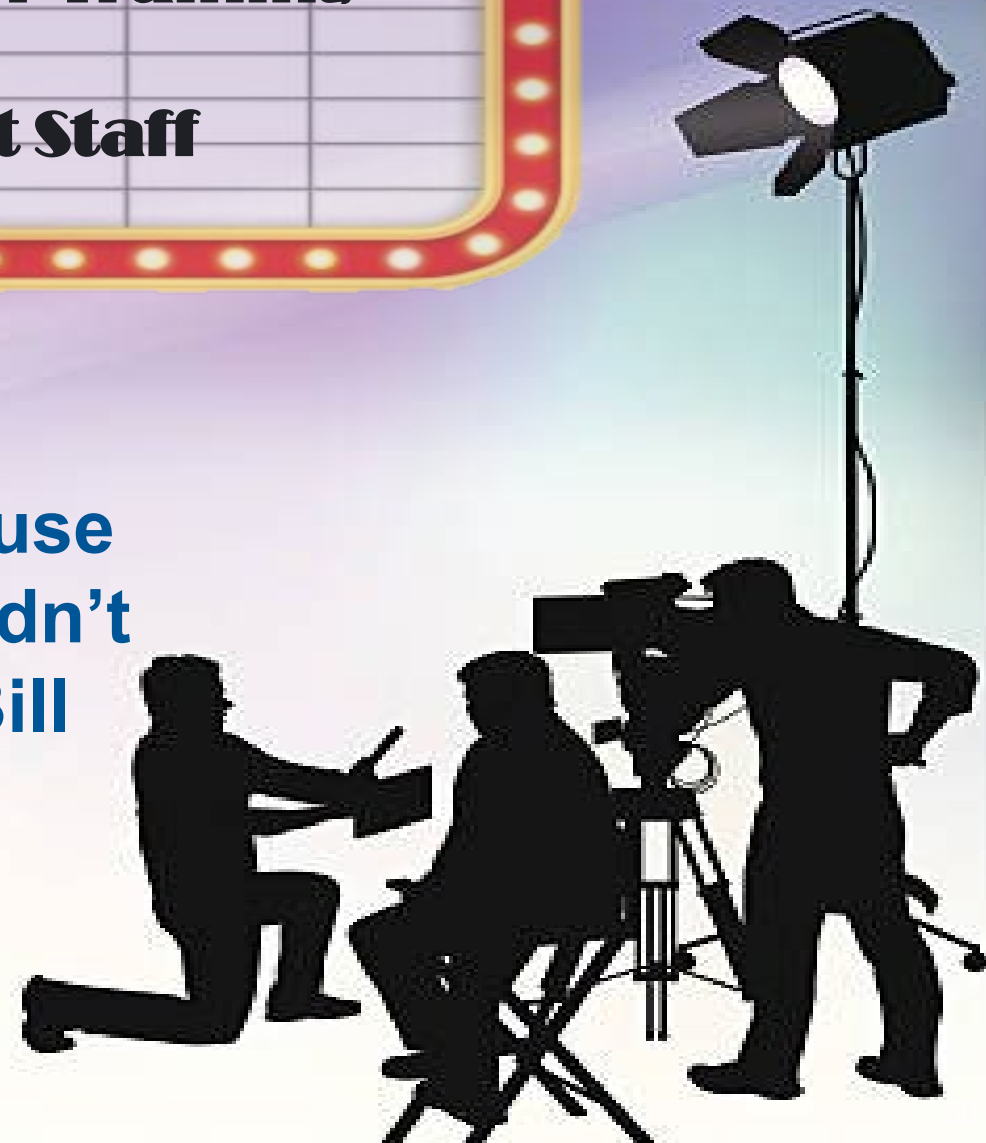
**Total Moodle
Trainings through
Q2 of PY 2024-25:**



**Coming Soon:
CASAS eTests Coordinator Training
Starring
CASAS Tech Support Staff**



....because
we couldn't
afford Bill
Murray



CASAS National News and Updates Webinar

February 5, 2025



Wrap it Up!

Kristine Kruczek Mains
National Program and
Training Specialist



CASAS National Summer Institute **2025**

June 9 - 12

- **Over 150 trainings and tech labs**
- **Amazing meals and daily social events**
- **National network – promising practices**

Hyatt Regency Orange County California

[To learn more, visit our website!](#)





2025 CASAS National Summer Institute

Garden Grove, CA (View map) Jun 9 – 12, 2025

Home

Agenda >

Attendees 27

Community 24

Messages 35

Photos

Resources >

My Stuff >

CASAS National Summer Institute 2025

Empowering Adult Education Champions for 45 years!

June 9–12, 2025

Hyatt Regency Orange County, California



Empowering Adult Education Champions for 45 years!

Welcome as we celebrate the 45th CASAS anniversary in beautiful Southern California.

Get ready for an incredible learning and networking experience!

Watch our In-Person Orientation Video, coming soon.

Schedule of Events is available!

Office Hours with CASAS Staff



Fridays, 11am Pacific / 2pm Eastern

- February 7, 2025
- February 21, 2025

Register:

<https://www.casas.org/training-and-support/casas-live-office-hours>



Upcoming Live Training

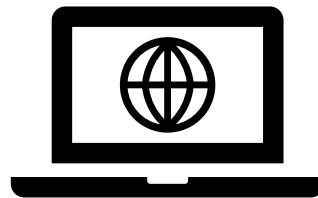
**TEACHER
PORTAL**



Mastering the Basics



February 13, 2025 – All States
11:00 am – 12:30 pm (Pacific)



[Reserve a Seat](#)

**We hope to see you at the next
CASAS News and Updates Webinar!**

Wednesday, April 16, 2025
11 am Pacific/2 pm Eastern
Reserve a Seat

